

MARION MILITARY INSTITUTE

FACULTY/STAFF HANDBOOK

TABLE OF CONTENTS

PRESIDENT’S PHILOSOPHY, GUIDANCE AND EXPECTATIONS

1. HISTORY, MISSION, GOALS, AND ORGANIZATION

- 1.1 Accreditation
- 1.2 History
- 1.3 Mission Statement and Vision Statement
- 1.4 Institutional Goals
- 1.5 Administration of the College
- 1.6 Alabama Community College Board of Trustees and Chancellor

2. COLLEGE COMMITTEES

- 2.1 College Committees

3. COMPLIANCE WITH FEDERAL LAW

- 3.1 Americans with Disabilities Act (ADA)
- 3.2 Drug-Free Workplace Policy
- 3.3 Equal Opportunity in Education and Employment
- 3.4 Family Education Rights and Privacy Act (FERPA)
- 3.5 Harassment and Discrimination Policy

4. PERSONNEL POLICIES AND PROCEDURES

- 4.1 Hiring Process
- 4.2 Classification of Personnel
- 4.3 Conflict of Interest and Ethics
- 4.4 Employment of Relatives
- 4.5 Criminal Background Checks
- 4.6 Change of Address, Name, and/or Phone Number
- 4.7 Adjunct Instructors
- 4.7:1 Adjunct and Part-time Instructor Pay Rates
- 4.8 Duty Days and Holidays
- 4.9 Full-Time Employee Schedule
- 4.10 Employee Attendance and Timeliness
- 4.11 Faculty Qualifications
- 4.12 Faculty Job Responsibilities
- 4.13 Instructor Load and Hours
- 4.14 Overload Classes and Under-Enrolled Classes
- 4.15 Fair Labor Standards Act-Overtime
- 4.16 Compensatory Time
- 4.17 Students First Act
- 4.18 Grievance Procedure
- 4.19 Employee Complaint
- 4.20 Academic Freedom
- 4.21 Title IX Sexual Harassment Complaint Procedures

- 4.22 Political Activity
- 4.23 Copyright Policy
- 4.24 Outside Employment
- 4.25 Evaluation Procedures
- 4.26 Resignations
- 4.27 Employee Conduct Code
- 4.28 Professional Attire
- 4.29 Phones, Pagers, and Electronic Devices
- 4.30 Field Trips

5. EMPLOYEE BENEFITS

- 5.1 Teacher Retirement System
- 5.2 Insurance
- 5.3 Leaves with Pay
- 5.4 Leaves Without Pay
- 5.5 Employee-Dependent Tuition Assistance

6. GENERAL INFORMATION

- 6.1 Tobacco-Free Campus
- 6.2 Firearms on Campus
- 6.3 Vehicle Registration
- 6.4 Travel
- 6.5 Computer Use Policy
- 6.6 Library Services
- 6.7 Rental Property and Use of Campus Facilities
- 6.8 Purchasing
- 6.9 Fundraising
- 6.10 Course Syllabi
- 6.11 Textbooks
- 6.12 Faculty Grade Reporting
- 6.13 Withdrawal Policy
- 6.14 Final Examinations
- 6.15 Attendance Policy
- 6.16 Grading System, Grade Changes, and Appeal of Course Grade
- 6.17 Independent Study
- 6.18 Curriculum Changes
- 6.19 Maintenance Requests
- 6.20 Emergency Class Dismissal
- 6.21 Academic Integrity
- 6.22 Use of Security Cameras on Campus

APPENDICES

- Appendix A: Family Relationship Disclosure Form
- Appendix B: Employee Address Change/Change of Status Form
- Appendix C: Request for Approval of Outside Employment
- Appendix D: Annual Performance Review Form

Appendix E: FMLA Employee Rights & Responsibilities
Appendix F: Tuition Waiver Form
Appendix G: Travel Forms
Appendix H: Incomplete Grade Form
Appendix I: Independent Study Request Form
Appendix J: Marion Military Institute Organizational Structure
Appendix K: Curriculum Revision Proposal Form

MEMORANDUM #1 – President’s Philosophy, Guidance and Expectations

DATE: August 4, 2021

TO: Faculty and Staff of MMI

FROM: Colonel David J. Mollahan, President

As MMI president, this is my general policy statement that intends to shape and inform MMI policies. Represented are philosophies, guidance and expectations with regard to how our institution should operate and how I believe each of us should participate as a member of the MMI team.

These are born of my own experience in various leadership positions throughout my Marine Corps career, but I believe they are relevant in any setting where an organization of people aimed at a common mission functions to achieve that mission. The mission we have as an educational institution is so important and so essential that we owe it to our cadets, their families, and the country to do all we can to be the best people we can be, be the best at what we do, and work together to provide the best educational experience possible.

Basic Courtesy and Respect

I believe that this is the foundation of good leadership and a well-functioning team. It all starts with the establishment of a work environment in which everyone is treated with courtesy and respect. Every individual deserves such treatment. Respect for human dignity is an elemental imperative in everything we do. This is a people profession, and people are our single most precious resource, and they must be treated in a manner that reflects this reality.

A work environment that tolerates sexual harassment, harassment or bullying, discriminatory behavior, gossip, innuendo, or any other such disrespectful activity cannot be allowed to exist. Not only is it wrong and unacceptable in the most basic sense, not only is it inconsistent with our ethos and mission as a higher educational institution imbued with military values, but it is also completely counterproductive to good team building and will lead to failure.

No organization can ever be truly great without mutual respect among its members. As an institution of higher learning, our mission is so important that we have to be great and to be great, we must function as an effective team. Good team building starts with each of us committing to the idea that basic courtesy and mutual respect are mission essential.

Adherence to high standards of courtesy and respect extends into the execution of our mission as well. As a professional service organization, basic courtesy and respect are essential in our daily dealings with those we serve and with whom we engage; our cadets, parents, guardians, alumni, or any other constituents. Abrupt or disrespectful language or demeanor, failure to return phone calls, displays of impatience, etc., are all inconsistent with our mission to serve the needs of our cadets. How we treat each other is a measure of our character. How we treat our constituents is a measure of our professionalism.

Professional Respect

Where basic courtesy and respect are things that each of us deserves, professional respect is something that each of us must earn. Professional respect is gained through demonstrated commitment to this institution and its mission, commitment to our respective positions and duties, commitment to the achievement of individual professional excellence. Those who work hard, who try to make a difference, who try to make themselves better as professionals, who try to contribute as much as possible to the greater good, and who tend to be more selfless than selfish are those who earn the most in terms of professional respect.

Within our institution, team building requires professional respect to cut across Departments. It is unacceptable that one Department operates at odds with another. We are one institution. No one Department is more or less important than another. Each Department has roles and responsibilities that are essential and are to be respected. Therefore, we must, on the one hand, respect each other's roles and responsibilities, but on the other hand, be able to work together and support one another across Department boundaries.

The 4 Cs: Communications, Coordination, Collaboration, Cooperation

The key to effective organizational team building is found in its intra-organizational communications, and with that, the ability to keep each other informed. The senior leadership has a responsibility to pass on strategic guidance and information of general interest. Each supervisor at every level is responsible for doing the same within your area of responsibility. Each member is responsible for taking an active role in keeping apprised of information provided and for passing information up the chain of command as well as across it.

Inter-departmental communications ensure that actions, policies or decisions in one Department do not create unintended second and third-order effects in another Department or across the entire College. Always ask the questions: "What do I know, or what am I doing? Who else should know? And have I told them?"

All Departments must establish an active communications posture. Supervisors must keep members informed of Department and school activities, new policies, training opportunities, etc. Supervisors must also actively seek subordinate input on issues of concern, on ideas for better ways to do business, save money, etc.

A general attitude of cooperation and collaboration is necessary throughout MMI. We need to sustain a mindset that we are all part of the same team, the same family, that we are all on the same side trying to achieve the same mission collectively. We need to commit ourselves to a spirit of cooperation and active collaboration in our efforts to operate in a collective manner effectively. It is essential that we communicate, coordinate, collaborate and cooperate.

Expertise and Training

Each of us must be an expert in our field. We must each seek to excel in our respective position with the aim of being the best there is in that position. To that end, training is an essential

element. We are each expected to ensure that specified position training requirements are met and training opportunities that directly enhance expertise and job performance are pursued. Where scarce resources may limit off-site training, supervisors are expected to find other creative ways for training to be accomplished, either through online resources, in-house training, or guest trainers that can come on-site for the benefit of multiple employees.

Training is mission essential, and we are to exhaust all means to achieve the necessary training to ensure we each can perform our duties and execute our mission at the highest levels of professional competence possible.

Policies, Procedures, Guidelines, and Compliance

As professionals, we are each expected to be educated on policies, procedures, and guidelines that govern our respective areas of work responsibility as well as those general responsibilities that come with being an employee of the State and MMI. Each Department must continually stress the importance of familiarity with operating procedures and policies in accordance with MMI, State, and Federal requirements. Each of us must have knowledge about how to access this kind of information and must be informed about the content of this information.

It is essential that all operations in every functional area of MMI are done in compliance with all guiding policies, procedures and guidelines. Knowledge and compliance are not only a part of being a professional but are necessary for the best possible functioning in our day-to-day operations and activities. At the same time, this allows us to successfully bear the scrutiny of inspectors and examiners that may be required to inspect our programs and operations from time to time.

Timeliness

Timeliness in all things is the mark of a professional, and more fundamentally, it is a matter of simple courtesy. It is expected that all MMI events will start on time; meetings will start and end on time; due dates for tasks assigned will be met on time; reports required within MMI, by the State, or by the Federal government will be completed by the due date assigned, on time. When a due date will not be met, timely notification is expected to be given.

Cadets are expected to be at their appointed place of duty, whether it is for class, formation, athletic practice, duty, etc., on time. Accountability for failure to do this reinforces the development of their sense of exactness, attention to detail, and discipline.

In my view, lack of concern about timeliness, whether in a staff member or a cadet, is both selfish and disrespectful. It is also indicative of a lack of focus, self-discipline, and attention to detail and the mark of a sloppy and unprofessional attitude. Such an attitude is not in keeping with the high standards of professional performance expected of us all here at MMI.

Setting the Example

Each of us can have an influence on our cadets. Everything we do, in every way we do it, must be done to the highest standards of personal and professional excellence. We must each be an example of maturity, responsibility, and dedication to duty. We must be an example of courteous and respectful attitudes on the personal level and in the workplace.

At the same time, we must each help to reinforce the ideas of personal accountability in the actions of each cadet we interact with. Unexcused absences, tardiness, sloppy uniforms, inappropriate language, and a disrespectful attitude all require each of us to confront and correct it wherever and whenever we see it and report it to the Commandant whenever deemed necessary for more formal accountability. Our cadets will never become responsible if they aren't held accountable.

The cadets will learn something about accountability, responsibility, standards, respect, courtesy, self-discipline, and leadership from every one of us they engage with. This is not only the domain of the Commandant and his staff, the Honor and Respect program, or the cadet leadership and character development program but the domain of everyone on this campus. Always set the example because they are always observing and learning. We want them to see and learn what is right because without learning this, their potential will be unnecessarily limited, and as educators, we will have failed them.

Passion

Finally, our business of education requires passion. To be truly effective, each of us has to believe that our role is one that contributes to a greater good. In the case of MMI, this good is defined by our efforts to prepare our posterity to assume their place in the world; to become successful contributing members of American society; to assume their role as our country's next generation of leadership. No one at MMI has just a job. Rather, every one of us at MMI has a duty for a greater purpose, and that purpose is to provide a higher education to our cadets. Everything each of us does leads to this. It requires a passion for believing in this purpose, and with that passion will come a sense of contribution that makes each job more than a job and gives each of us the right to feel justly proud of what we do here. It is this pride that will drive us all to establish and sustain ourselves as a premier institution of higher learning. Without passion, we just get by; with it, we excel.

SECTION 1

**HISTORY, MISSION, GOALS,
AND ORGANIZATIONS**

POLICY 1.1: ACCREDITATION

Marion Military Institute (MMI) is accredited by the Southern Association of Colleges and Schools Commission on Colleges to award the associate degree. Contact the Commission Colleges at 1866 Southern Lane, Decatur, Georgia 30033-4097 or call 404-679-4500 for questions about the accreditation of Marion Military Institute.

This accreditation statement is published solely for accreditation-related purposes. The Commission does not answer any admissions or general education inquiries related to policies or practices of Marion Military Institute.

POLICY 1.2: HISTORY

Marion Military Institute (MMI) is the nation's oldest military junior college, tracing its origins back to 1842 with the founding of Howard College in Marion, Alabama. During the Civil War, the Chapel and Lovelace Hall, both built in 1857, were used as Breckinridge Military Hospital, treating both Union and Confederate soldiers. Howard College remained in Marion until the Alabama State Baptist Convention made the decision to move the college to Birmingham, Alabama in 1887. It later became Samford University. At the time of the move, Colonel James T. Murfee was the Howard College president, a position he had held since coming to Marion in 1871 from the University of Alabama. Murfee, along with several of the faculty and trustees, chose to remain on the existing campus in Marion and formally establish MMI. He and the new MMI Board of Trustees developed and implemented institutional policies demanding high standards for the development of character, academic excellence, and military traditions, which have been the hallmarks of MMI ever since.

Hopson O. Murfee, MMI's second president, was one of the foremost advocates of a student-run government that focused on honor and ethics within the student body. Because of this, MMI was one of the first schools in the south to establish a student government association as well as an honor system, both of which are still very much a part of the Corps today. Under H.O. Murfee's leadership, the school achieved national recognition. William Howard Taft served as President of the Board of Trustees, and Woodrow Wilson, President of Princeton University at the time, was the featured speaker at the convocation held in the MMI chapel in 1905. In tribute to Woodrow Wilson and Princeton University, MMI's school colors were changed to orange and black, and the tiger was adopted as the mascot.

The Service Academy Program had its beginnings at MMI with the establishment of the Army-Navy department in 1910. The Army ROTC program was introduced in 1916 in response to WWI, and the Army ROTC Early Commissioning Program was established in 1968 at the height of the Vietnam War.

Until World War II, the campus consisted primarily of the Chapel and Old South (Lovelace) Barracks, both from the old Howard College era. The MMI campus currently encompasses over 160 acres and includes 38 buildings.

MMI continued as a private institution that included both a high school and a junior college governed by an MMI Board of Trustees until 2006, when the Alabama legislature voted to merge the institute into the Alabama Community College System. The high school was disestablished, and MMI became a military junior college only. Today MMI is a member college of the ACCS

and is governed by the ACCS Board of Trustees. The legislation retained the original MMI Board of Trustees as the new MMI Foundation Board of Trustees and Advisors with the role of governing the MMI Foundation that supports MMI fundraising and houses the endowment. Additionally, this Board now provides advice and counsel to the MMI President and the ACCS. MMI is a member of the Association of Military Colleges and Schools of the United States and the National Junior College Athletic Association.

POLICY 1.3: MISSION STATEMENT AND VISION STATEMENT

Mission

Marion Military Institute, a two-year public institution of higher learning, educates and develops cadets as future leaders through an immersive experiential military environment that integrates intellectual, character and physical development in order to prepare them for success in four-year colleges, U.S. service academies, and in military and civilian careers.

Vision

Marion Military Institute will be nationally recognized as the premier leader development college of Alabama with whole cadet enrichment through an immersive and intentional experiential learning environment, a relevant, rigorous and robust academic program and character and leadership education development system.

POLICY 1.4: INSTITUTIONAL GOALS

Goal 1: Academic Programs – MMI will enhance its academic and instructional program through improvement of the physical classroom environment, facilitation of credit transfers upon graduation, establishment of an online instructional platform, and increased efforts to attract and retain highly qualified faculty.

Goal 2: Leadership, Character and Career Development – MMI will develop future leaders using a four-pillar model to advance leadership, character, and career development. These Pillars are, I: Moral and Ethical Education Training, II: Leadership Education and Training, III: Physical and Mental Readiness Training, and IV: Career Development and Engagement. By design, the integration of these pillars will prepare each cadet for success at four-year institutions, service academies and other career opportunities. MMI will accomplish this by increasing opportunities for staff and faculty professional development, cadet leadership and athletic opportunities, satisfaction with residential life, career opportunities and general cadet welfare.

Goal 3: Enrollment – MMI will continue to achieve enrollment growth by identifying key factors to reduce student attrition and implement seminal recruiting strategies to increase new cadet enrollment for an achievable and sustainable enrollment count of 450 by Fall 2021.

Goal 4: Facilities, Infrastructure, Safety and Security – MMI will continue to improve existing campus facilities in the areas of safety, security, technology, and deferred maintenance. MMI will create a pathway to a 21st Century Campus with a focus on safety and security while continuing to respect our rich history.

Goal 5: Resources – MMI currently has four revenue sources: state appropriations, enrollment revenue, auxiliary services revenue and support from the MMI Foundation. Ways that MMI continue to expand and diversify its resource base are 1) obtaining additional state funding; 2) identifying ways to increase the revenue stream brought in by auxiliary services; 3) developing a fundraising and development plan in collaboration with and/or through the MMI Foundation and the Office of Enrollment Management to increase private giving and impact enrollment revenue; and 4) exploring the possibility of a recurring federal allocation, which would add a fifth revenue source.

POLICY 1.5: ADMINISTRATION OF THE COLLEGE

President

The President is the chief executive officer and is responsible to the Chancellor for the day-to-day operation, management, control, supervision, maintenance, regulation, and improvement and advancement of MMI. The President is responsible for operating MMI within Alabama Community College Board of Trustees policy and all applicable state and federal laws, and to ensure institutional compliance with all appropriate accreditation requirements as a member of the Southern Association of Colleges and Schools Commission on Colleges. The President also serves as the Vice-Chairman of the Alabama Military Hall of Honor Board of Directors and as MMI's primary representative for MMI membership in the Association of Military Schools and Colleges of the United States (AMCSUS).

Senior Vice President and Commandant of Cadets/2nd in Command

The Senior Vice President and Commandant of Cadets is the chief administrative officer for student affairs and services and the advisor to the President regarding cadet development and support. Responsibilities include administration, discipline, health, welfare, security, and character and leadership development of all MMI cadets. Responsibilities also include planning, coordination and execution of general daily operations, activities, and special events, as well development, execution and oversight of the MMI Leadership Education Program (LEP). As senior officer under the President, the 2nd in command serves in the President's stead in the President's absence or as may otherwise be required.

Chief of Staff /Vice President for Institutional Advancement/MMI Foundation Exec. Director

The Vice President for Institutional Advancement is responsible for all matters related to fundraising, alumni affairs, donor relations, government relations, strategic engagement, and public information and relations. Responsibilities also include directing and overseeing all policies, objectives, and initiatives regarding the MMI Foundation and the Presidential Advisory Council, and supervising the Executive Director for the MMI Alumni Brigade. As senior officer of the President's staff, the Chief of Staff ensures all issues, initiatives and other activities requiring the MMI President's awareness and/or decision from the various departments has been vetted before engaging the President.

Chief Academic Officer

The Chief Academic Officer is responsible for general oversight of MMI's academic programs, faculty, instructional support requirements, and accreditation requirements.

Director of Athletics

The Director of Athletics is responsible to the President for the day-to-day management, supervision, administration, promotion and development of MMI's intercollegiate athletic programs. Responsibilities include athlete recruiting, retention and academic success; supervisory oversight of the coaching staff; oversight of all athletic compliance requirements; and management of all athletic facilities.

Director for Enrollment Management

The Director for Enrollment Management is responsible for oversight of student recruitment, application, and enrollment functions of the College. Responsibilities include strategic enrollment planning and implementation of initiatives to meet the overall enrollment goals of the College and to support the recruitment, admission, retention and graduation of cadets.

Executive Staff

The Executive Staff is the equivalent of the President's cabinet. It provides for leadership, supervision, and management of the most senior departments with broad functional and budget management responsibilities.

The Executive Staff will, at a minimum, include: the President; the Senior Vice President and Commandant of Cadets, the Chief of Staff /Vice President for Institutional Advancement/MMI Foundation Exec. Director, the Chief Academic Officer, the Director of Athletics, and the Director of Enrollment Management.

Executive Staff will conduct off-site meetings/conferences on occasion as deemed necessary to discuss, adjust, develop, and/or resolve strategic-level issues, priorities, projects, and/or plans. Selected additional members from the Senior Staff may also be included in these meetings/conferences as determined necessary by the President.

Executive Staff will be expected to attend college social functions, commencement exercises, guest speaker events, receptions, Parents Weekend, Alumni Weekend, and other events as may be directed by the President in order to set an example for the College, assist with strategic engagement efforts, or provide for a professional atmosphere of welcome and hospitality.

Senior Staff

The Senior Staff includes all members of the Executive Staff plus the Comptroller, Facilities and Maintenance Director, Director of Human Resources & Compliance, Director of IT, and others as may be considered organizationally appropriate on a case-by-case basis.

While not an employee of MMI, the Army ROTC Detachment Commander/Professor of Military Science (PMS) is considered an ex-officio member of the Senior Staff. The Professor of Military Science is the senior military officer in charge of MMI's Army ROTC Detachment. The ROTC PMS reports directly to U.S. Army Cadet Command (USACC), and specifically to the USACC 1st Brigade Commander. The PMS works directly with the President and Senior Staff to ensure coordination and execution of all activities regarding the Army ROTC Early Commissioning Program (ECP). Responsibilities include ECP cadet recruiting, retention, military education and training, physical training, academic success and conduct accountability. Additionally, the PMS

provides general military support to MMI and the Corps of Cadets by providing military science courses, military training activities, demonstrations, awards and related ceremonies, and other military support as may be agreed upon for the benefit of MMI's immersive military model, MMI's academic, leadership and character education mission, as well as MMI's strategic plans and initiatives.

Senior Staff will meet regularly, usually once a week, to ensure effective cross-staff communications and coordination for day-to-day operations as well as future plans and events. The President will chair these meetings, and the Executive Vice President will chair in the President's absence. Senior Staff, as MMI's senior leadership, will be expected to set the standards of performance and professionalism within their respective departments.

Succession of Authority

In the President's absence the Senior Vice President will chair Executive or Senior Staff meetings, attend President's meetings and conferences, and execute selected administrative duties as may be required and agreed upon with the President. The Chief of Staff will assume this role in the event of the absence of both the President and the Senior Vice President.

POLICY 1.6: ALABAMA COMMUNITY COLLEGE SYSTEM BOARD OF TRUSTEES

Alabama Community College System	
Governor Kay Ivey President	
Mr. J.E.B Shell	District 01 Representative
Mr. John Mitchell	District 02 Representative
Ms. Valerie Gray	District 03 Representative
Mr. Matthew Woods	District 04 Representative
Mr. Goodrich ‘Dus’ Rogers	District 05 Representative
Mr. Milton A. Davis	District 06 Representative
Llevelyn Rhone	District 07 Representative
Mr. Blake McAnally	Member-at-Large
Dr. Yvette Richardson	Ex officio
Alabama Community College Systems	
Mr. Jimmy H. Baker Chancellor	

SECTION 2

COLLEGE COMMITTEES

POLICY 2.1: COLLEGE COMMITTEES

Admissions Committee

The purpose of the Admissions Committee is to rule on the eligibility of students requesting admission to the College, such as students who fit one or more of the following criteria:

1. Transfers from other institutions with academic suspension, dismissal, or disciplinary records.
2. Students requesting reinstatement to the College after suspension/dismissal due to academic citizenship issues.

Academic Appeals Committee

The purpose of the Academic Appeals Committee is to consider appeals brought by students who meet one or more of the following criteria:

1. Students who dispute a course grade and who have exhausted other avenues of appeal per the “Appeal of Course Grade” policy.
2. Students who wish to appeal academic suspension.

Academic Assessment Committee

The purpose of the Academic Assessment Committee is to supervise academic assessment efforts and monitor the effectiveness of MMI’s academic programs and courses.

Academic Council/Curriculum Committee

The Academic Council, composed of academic and professional faculty and staff and chaired by the Academic Dean, is the principal policy-making and advisory body on all matters related to and affecting teaching and educational programs at Marion Military Institute. It is also responsible for ensuring academic quality.

Members of the Academic Council will include:

- Chief Academic Officer (ex-officio)
- Chief Instructional Officer
- Department Chairs for Humanities; Mathematics and Natural Science; History and Social Science
- Director of the Library
- Director of Athletics
- Professor of Military Science
- Registrar (ex-officio)
- Director of Institutional Research (ex-officio)
- Director of Enrollment Management

Scholarship Committee

The purpose of the Scholarship Committee is to screen and review scholarship applications. The Committee, appointed by the President, is charged with the following responsibilities:

1. Assure the most comprehensive financial assistance program possible through maximum use of Title IV funds, veterans’ benefits, and institutional and foundation funds;
2. Regularly review all policies and procedures concerning all scholarship/financial aid programs and make recommendations to the President for adjustments, as needed;

3. Recommend to the President the appropriate distribution and awards of all institution and foundation-controlled scholarship and financial aid resources.

Financial Aid Appeals Committee

The purpose of the Financial Aid Appeals Committee is to consider appeals from cadets whose financial aid has been suspended due to unsatisfactory academic performance. The committee is appointed and convened by the Director of Financial Aid.

Institutional Effectiveness Committee

The purpose of the Institutional Effectiveness Committee is to advise the President on matters related to the review of the College's mission, vision, and goals. Additionally, the committee, which is appointed by the President, evaluates the College's progress in the implementation of the strategic plan.

Campus Safety & Security Committee

MMI's Safety Committee is responsible for ensuring that appropriate health and safety standards are maintained and that appropriate federal and state statutes are observed. The membership shall include:

- Senior Vice President for Student Affairs/Commandant of Cadets
- Director of Facilities and Operations
- Chief of Security
- Cadet Representative

Campus Emergency Response Team (CERT)

MMI's Campus Emergency Response Team (CERT) is responsible for crisis management. The membership shall include:

- President
- Senior Vice President/Commandant of Cadets
- Executive Vice President/Chief Academic Officer
- Comptroller
- Superintendent of and Grounds
- Director of Facilities and Operations
- Chief of Security
- Public Relations Coordinator
- Cadet Representative

Student Success and Retention Committee

The Mission of the Marion Military Institute Student Success and Retention Committee is the responsibility for early identification of at risk cadets due to academic, conduct and/or social related issues. The committee is expected to recommend actions that are intended to provide for a path to success and avert a retention loss, and then review and monitor the effectiveness of the actions. This committee will also continually assess and monitor overall general cadet success and satisfaction trends that tend to lead to retention losses and devise recommended strategies and solutions that will reduce these losses in order to increase retention. Specifically, the Committee will:

1. Meet on a regular basis to review all cadets considered at risk due to academic, conduct, social or other issues;
2. Determine actions steps to assist at-risk cadets to avert a retention loss;
3. Continue monitoring progress of identified at-risked cadets;
4. Review, evaluate, and monitor all college data relevant to persistence, retention and attrition, including student departures due to academic, disciplinary, medical, and self-initiated reasons;
5. Facilitate open communication with all campus departments to research and understand retention issues from the purview of each department;
6. Develop action steps designed to enhance retention and reduce attrition, in accordance with the senior administration and, when appropriate, provide assistance in the implementation of such initiatives;
7. Assist departments in their efforts to maintain and enhance current programming and processes that have shown to be effective in increasing cadet retention; and
8. Regularly report to the President on the committee's findings, efforts, recommendations and outcomes.

SECTION 3

COMPLIANCE WITH FEDERAL LAW

POLICY 3.1: AMERICANS WITH DISABILITIES ACT (ADA)

COMPLIANCE WITH FEDERAL LAW AMERICANS WITH DISABILITIES ACT EMPLOYEE REQUEST FOR ACCOMMODATION

The Americans with Disabilities Act prohibits discriminating against individuals with disabilities. The ADA also prohibits retaliation against an employee for taking any action pursuant to the Act.

Definition of Disability: The ADA states that an individual is disabled if s/he:

- has a physical or mental impairment that substantially limits one or more of the individual's major life activities;
- has a record of such impairment; or
- is regarded as having such an impairment

Definition of Qualified Individual: The term "qualified individual with a disability" means:

- an individual with a disability,
- who can perform the "essential functions" of the employment position?
- with or without reasonable accommodation.

Employers are required to provide reasonable accommodation to the known limitation(s) of a person with a disability, as defined by the ADA.

In order to establish the existence of a disability and request reasonable accommodation under the ADA, an employee must complete and submit a Request for Disability Accommodation Form to Human Resources.

Employees seeking a reasonable accommodation under the ADA must follow the Employee Accommodation Procedures.

AMERICANS WITH DISABILITIES ACT EMPLOYEE ACCOMMODATION PROCEDURES

- 1. Documentation of Disability:** When submitting a Request for Disability Accommodation Form, the employee must provide documentation of the disability from an appropriate health care provider. The employee will be required to sign a Medical/Health Care Information Release Form, so that the health care provider can provide the College with the appropriate documentation.
Upon request, the department chair, supervisor, or cabinet member will provide a written description of the essential functions of the job, which may include the mental and physical demands of the employee's job.
It is the employee's responsibility to ensure that the medical documentation/information requested is provided.

2. **Temporary Accommodations:** After consultation with the employee, department chair, supervisor, or cabinet member, temporary accommodation may be provided pending receipt and evaluation of the documentation of the disability.
3. **Evaluation of Documentation:** Upon receipt of documentation from an employee's health care provider, a determination will be made as to whether the employee has a disability as defined by the ADA, and if the employee can perform the essential functions of the position with or without reasonable accommodations.
4. **Final Determination and Notification to Employee:** The College has the authority to make the final determination regarding what accommodation, if any, is appropriate. When a final determination is made, the Director of Human Resources will send written notification to the employee of the determination, whether an accommodation has been granted, and if so, will specify what accommodation has been granted. Notification will also be given to the department chair, supervisor, and cabinet member.
5. **Right to Appeal:** If an accommodation is denied, the employee may submit a notice of appeal to an appeals committee, appointed by the President which will consist of 5 members of the College faculty and staff, within seven (7) working days of receipt of the written accommodation decision.

POLICY 3.2: DRUG-FREE WORKPLACE POLICY

In compliance with the provisions of the federal *Drug-Free Workplace Act of 1988*, and the *Drug Free Scholar and Communities Act of 1989*, institutions under the direction and control of the Alabama Community College System will take such steps as are necessary in order to provide a drug-free environment in accordance with these Acts.

The faculty and administration of Marion Military Institute are firmly committed to the safety and health of students and staff. The influence of alcohol and other drugs in the workplace are detrimental to the College's ability to provide a healthy learning environment. Therefore, the distribution, sale, purchase, use, possession, or reporting to class or work under the influence of intoxicants, non-prescribed narcotics, hallucinogenic drugs, marijuana, or any other illegal or controlled substance while on school property is strictly prohibited and illegal. Furthermore, the administration hereby notifies all employees, students, outside contractors, or any other persons on school property of its intention to enforce this policy through testing and/or search. If a party exhibits behavior that would cause the faculty or administration to believe or witness distribution or use of an illegal substance or alcohol, appropriate action will be taken.

Any employee of Marion Military Institute that is injured at work or in the course of employment will be tested for drugs and alcohol and if impaired, may not be paid benefits under the Alabama Workers' Compensation Law if the injury is a result of an accident caused by drug or alcohol impairment. An employee who refuses to submit to, or cooperate with, a blood or urine test after an accident forfeits his/her rights to Workers' Compensation benefits under Alabama Code 25-5-51 and is subject to disciplinary action up to and including termination.

Alcohol may be served on campus, as approved by the President or his designee, for specified social activities or events.

Reference ACCS Board of Trustees Policy 613.01: Drug-Free Workplace.

POLICY 3.3: EQUAL OPPORTUNITY IN EDUCATION AND EMPLOYMENT

The ACCS Board of Trustees and the entities under its direction and control are equal opportunity employers. It is their policy to provide equal opportunity for employment and advancement to all applicants and employees without regard to race, color, national origin, religion, age, disability, marital status, or gender, as provided in federal and state law.

POLICY 3.4: FAMILY EDUCATION RIGHTS AND PRIVACY ACT (FERPA)

All Marion Military Institute (MMI) employees have the responsibility to protect the rights of students afforded them under the Family Education Rights and Privacy Act of 1974 (FERPA). The Act provides students with the right to inspect and review education records, seek to amend those records, and limit disclosure of information from the records. The Act applies to all institutions that are recipients of federal aid administered by the Secretary of Education. The following are provisions of FERPA, with specific application to MMI faculty and staff.

1. Faculty members are not to disclose any restricted information about a student to anyone outside of the College. The only exception to this policy occurs when the Registrar has informed the faculty that a student has signed a release, indicating that restricted information may be shared with a specific person.
2. Grades are not to be posted in any public manner.
3. It is the supervisor's responsibility to ensure that work-study students who have access to anything other than student directory information are informed of the seriousness of revealing student information to other parties.
4. Faculty and staff members must NOT share any access code to any other person without specific authorization. A student should never have access to a faculty or staff members log-in information.

POLICY 3.5: HARASSMENT AND DISCRIMINATION

1. Marion Military Institute is committed to providing both employment and educational environments free of harassment or discrimination related to an individual's race, color, gender, religion, national origin, age, disability, or any other protected class. Such activity is a violation of MMI policy, ACCS Board of Trustees policy, as well as relevant state or federal law. Employees shall adhere to the highest ethical standards and professionalism and refrain from any form of harassment. Both employees and students shall strive to promote an environment that fosters personal integrity where the worth and dignity of each human being is respected. Any practice or behavior that constitutes harassment shall not be tolerated.

2. Harassment can be defined as but is not limited to:
 - Disturbing conduct which is repetitive;
 - Threatening conduct;
 - Intimidating conduct
 - Inappropriate or offensive slurs, jokes, language, or other verbal, graphic, or other like conduct;
 - Unwelcome sexual advances, requests for sexual favors, or sexual-based offenses;
 - Assault;
 - Repeated contact solicited during non-traditional business hours may be perceived as harassment by the recipient unless it is specifically associated with work-related duties.
3. Employees and students who are found in violation of this policy shall be disciplined as deemed appropriate by the investigating authority.
4. Harassment of employees or students by non-employees is also a violation of this policy.
5. This policy shall be distributed, communicated, and implemented in a manner that provides all interested parties the opportunity to be informed of this policy. A system-wide educational program shall be utilized to assist all members of the community to understand, prevent and combat harassment. Each community and technical college is required to provide annual training related to harassment, including sexual harassment.
6. Complaints or Reports concerning sexual harassment should be made, processed and addressed according to Policy 620.03-ACCS Sexual Harassment Complaint Procedures.

Reference Alabama Community College System Policy 601.04 Harassment

SECTION 4

PERSONNEL POLICIES AND PROCEDURES

POLICY 4.1: HIRING PROCESS

The purpose of this policy is to provide for consistency, structure, and fairness in the hiring process and to ensure compliance with the Alabama Community College System Board of Trustees Policy and Procedure 602.02: Posting and Hiring.

I. Posting:

The President of each institution shall post notices for all personnel vacancies, full-time and part-time, temporary and non-temporary, for all salary schedules, except those for President.

All vacancy notices shall be posted on the institution's website at least seven (7) calendar days before the position is to be filled, and a minimum of fourteen (14) days when the vacancy is supervisory, managerial, or newly created.

II. Notice of Vacancy: The vacancy notice shall include, but is not limited to, the following:

- A. Job description;
- B. Title;
- C. Required qualifications;
- D. Salary schedule;
- E. Amount of Pay;
- F. Information on where to submit an application;
- G. Information on any deadlines for applying;
- H. A contact telephone number for questions;
- I. Any other relevant information.

III. Internal Posting: Internal postings are permitted to fill a current institutional position with a current institutional employee. These notices must be posted in accordance with Section I before the position is to be filled.

IV. Continuous Posting: For adjunct instructors, tutors, and part-time, on-call, or hourly employees only, a continuous vacancy notice may be posted on the institution's website and may state "open until filled." However, if a continuous vacancy notice has not been posted at least 7 days prior to hiring, these positions must be posted in accordance with Section I.

V. Temporary/Interim Positions: Temporary/interim positions may be selected at the discretion of the President but must be for a duration of one year or less. Not extension beyond one year may be granted without the written approval of the Chancellor. Notices for temporary/interim positions must be posted in accordance with Section I.

VI. Hiring: The President is responsible for all searches and documentation thereof and retains all hiring authority for positions at the college, except the Presidency.

- VII. Transfers or Reorganizations: Transfers or Reorganizations of existing personnel are not intended to be covered under this Policy.

Reference Alabama Community College System Policy 602.02 Posting and Hiring

POLICY 4.2: CLASSIFICATION OF PERSONNEL

A faculty member is a full-time instructor, library director, or counselor who meets qualifications established by the Alabama Community College System and whose salary is derived from Schedule D, as adopted by the Alabama Community College System.

An administrator is any professional staff person whose salary is determined from Schedules A, B, C-1, C-2 or C-3, as adopted by the Alabama Community College System.

A support person is any support or technical staff person whose salary is determined from Schedules C3, E, H, or L, as adopted by the Alabama Community College System and/or Marion Military Institute, or who is paid on an hourly basis.

POLICY 4.3: CONFLICT OF INTEREST AND ETHICS

1. Honesty and professional integrity are expected of all employees. It would be a serious violation of this trust if the interests of any institution under the direction and control of the Board of Trustees were to be disregarded in the course of performing professional duties. The use of official position and influence to further personal gain or that of families or associates is unacceptable behavior.
2. All employees have the right to acquire and retain status of a professional, personal, or economic nature. In a community as diverse and complex as the institutions that comprise the Alabama Community College System, there is always the possibility that the pursuit of individual interest may result in a conflict with those of the employing institution. This places an important responsibility on faculty and staff to recognize potential conflicts and prevent them. It is not expected that every employee will have a complete and current knowledge of the laws and regulations that apply to conflict of interest. However, all persons, particularly those with significant exposure to potential conflict of interest situations, should develop a sensitivity to this issue and seek guidance when appropriate.
3. Full-time employees may engage in outside employment provided that such activity: (a) does not interfere with the performance of other responsibilities as an MMI employee; (b) does not require use of MMI resources or facilities.

Scope of Policy

The above policy applies to all employees of Marion Military Institute, including part-time, and is inclusive of the following provisions:

Definitions:

Conflict of Interest

The term “conflict of interest” in this policy refers to situations in which financial or other personal considerations compromise, or has the appearance of compromising, an individual’s professional judgment and ability to perform his or her responsibilities to Marion Military Institute.

POLICY 4.4: EMPLOYMENT OF RELATIVES

Marion Military Institute complies with ACCS Board of Trustees Policies and Procedures 205.03: Employment of Relatives; 205.04: Disclosure of Employment of Relatives; and 205.05: Supervision and Evaluation of Relatives, relative to the employment of relatives. All applicants for employment must disclose certain relationships to employees in the Alabama Community College System or to any member of the Board of Trustees.

Upon initial employment, all employees must complete a Family Relationship Disclosure Form. A revised form must be completed within 15 days of a change of circumstances relating to this information. Additionally, a revised form must be completed if an employee changes positions at the College (See Appendix A).

All applicable relationships will be reported to the Chancellor’s office, as required, to be reviewed for possible conflicts of interest.

POLICY 4.5: CRIMINAL BACKGROUND CHECKS

1. A criminal background check shall be conducted on all new hires or volunteer service.
2. Except as indicated in paragraph 3, individuals convicted of a felony or crime involving moral turpitude will not be eligible for employment. Employees hired in violation of this policy will be subject to termination in accordance with the *Alabama Fair Dismissal Act*.
3. Applicants and current employees convicted of a felony or crime involving moral turpitude must obtain a recommendation from the President for the Chancellor’s approval that the applicant or current employee is suitable for employment. Factors to be considered in determining whether the individual is suitable to include, but are not limited to:
 - a. the proximity or remoteness in time of the conduct
 - b. the risk of harm to persons or property of the College
 - c. the likelihood of the recurrence of the questioned conduct
 - d. the job title
 - e. any extenuating circumstances
4. Current employees determined to be unsuitable for employment based on a felony conviction or conviction of a crime involving moral turpitude shall have the right to appeal directly to the Chancellor.

5. Within five (5) calendar days, any employee convicted of a felony or crime involving moral turpitude subsequent to a criminal background check must report the conviction to the President. An unreported conviction will be subject to disciplinary measures for failure to report.
6. The Chancellor shall issue guidelines to ensure consistent compliance of this policy.

Reference Alabama Community College System Policy 623.01 Criminal Background Checks

POLICY 4.6: CHANGE OF ADDRESS, NAME, AND/OR PHONE NUMBER

All Marion Military Institute employees should inform the Office of Human Resources of any change in address, name, and/or phone number within 30 days of the change through completion of the Address Change/Change of Status form. Any change in name must be accompanied by legal documentation verifying the change (marriage license, etc.) The form to use in making these changes may be found in Appendix B of the MMI Faculty and Staff Handbook.

POLICY 4.7: ADJUNCT INSTRUCTORS

Applications for adjunct instructors are accepted only as positions are posted and available. Credentials are evaluated by the Chief Instructional Officer to determine qualifications. Adjunct instructors must meet the minimum qualifications set forth by the college, ACCS System Office, and the Southern Association of Colleges and Schools. Neither tenure nor seniority is attained through adjunct employment. Employment and letters of appointment are on a semester-to-semester basis.

The Chief Instructional Officer and appropriate Department Chair are responsible for orientation relating to course syllabi and objectives, grading standards, and other instructional policies and procedures. Supervision of instruction by all adjuncts is also the responsibility of the Chief Instructional Officer and appropriate Department Chair.

Adjunct instructors are evaluated each semester through course evaluation forms and annually through a classroom observation by the Chief Instructional Officer or Department Chair.

POLICY 4.7:1: ADJUNCT AND PART-TIME INSTRUCTOR PAY RATES

Adjunct instructors are defined by Marion Military Institute (MMI) as those who teach no more than 2 courses per semester (maximum of 8 credit hours per semester). Base pay for adjunct instructors is \$600 per credit hour. An adjustment of \$200 per credit hour may be made by the Chief Academic Officer for purposes of compensating for travel and/or exceptional credentials and/or work experience. The President has final approval on all adjunct and part-time hiring and pay.

The category of part-time instructors indicates those who teach 3 college-level courses (at least 9 credit hours) per semester. A part-time instructor is paid at the rate of 66 percent of the salary category under which he or she would fit on the Alabama Community College System D schedule, according to his or her experience and qualifications.

POLICY 4.8: DUTY DAYS AND HOLIDAYS

The normal work week for full-time, non-instructional personnel employed by Marion Military Institute is at least forty (40) hours, exclusive of lunch. Days that the College is officially open are duty days for full-time, non-instructional employees of the College.

Employees shall be allowed the following official holidays on which days the College shall be closed:

- New Year's Day
- Martin Luther King, Jr./Robert E. Lee Birthday
- National Memorial Day
- Independence Day
- Labor Day
- Veterans Day
- Thanksgiving Day
- Day after Thanksgiving Day
- Christmas Eve
- Christmas Day

Additionally, the President of each college shall designate five other days on which the College will be closed in the official, approved calendar of the College.

Any personnel on an hourly pay schedule, including part-time Security Guard staff on the L Schedule, will receive double time pay when required to work on Federal holidays, as listed above, and/or when required to work on any designated College holiday approved by the President.

Reference Alabama Community College System Policy 608.02: Duty Days and Holidays.

POLICY 4.9: FULL-TIME EMPLOYEE SCHEDULE

1. Work Schedule Policy for Full-Time Administrative Personnel
 - a. Each full-time support or administrative person is expected to maintain a weekly schedule that includes 40 hours on campus, excluding the lunch period. Administrative offices are to be open from 8am to 5pm, Monday through Friday. Buildings and Grounds personnel work from 7am to 4pm each day. Library personnel work from 7:30am to 4:30pm each day.
 - i. The supervisor of each administrative department may petition the President or his designee for approval for his/her departmental personnel

to work a flexible schedule at certain times during the year, particularly during the summer months. At all times, a sufficient number of employees must be present so that the business of the Department may be conducted.

2. Work Schedule Policy for Full-Time Faculty

- a. Each full-time instructor, librarian, or counselor employed on Schedule D is required to maintain a weekly schedule that includes a minimum of 35 hours on campus excluding lunch and other regularly scheduled breaks. This does not mean that each instructor is to be on duty seven hours per day, but it does mean that each instructor is to have a regular schedule of instruction, office hours, advising, planning, and institutional duties. Faculty are expected to commit at least 25 hours per week to a combination of instruction and office hours. An instructor's office hours are to be on each course syllabus and posted on the office and/or classroom door.
- b. Full-time instructors, librarians, and counselors employed on an academic year contract (fall and spring semesters) shall work the number of instructional and non-instructional days as indicated by the college. Full-time instructors, librarians, and counselors employed on a twelve-month contract shall work the number of instructional and non-instructional days as indicated by the college. Those full-time summer faculty shall work the number of instructional and non-instructional days as indicated by the college.

Reference: Alabama Community College System Policy 608.02: Duty Days and Holidays; Instructor, Librarian, and Counselor Hours; Flexible Work Schedule.

POLICY 4.10: EMPLOYEE ATTENDANCE AND TIMELINESS

It is the policy of Marion Military Institute (MMI) that each employee exercise diligence, professionalism, and responsible behavior in the conduct of themselves and their duties as MMI employees. Each employee is therefore responsible for ensuring compliance with workplace attendance requirements as set forth in each employee's Letter of Appointment and as established by the respective supervisor. Employees are expected to report for duty at the assigned time and place, remain on duty during established work hours, and accurately report hours worked and leave taken.

Employee work attendance and promptness of arrival have direct effects on the ability of a department to perform work and/or provide services in support of the mission of MMI.

Excessive absenteeism and tardiness disrupt normal operations and place an extra burden on fellow employees. Abuses, therefore, will be subject to corrective and/or disciplinary action.

The policy on employee attendance and timeliness has been established to ensure the following:

- Consistent enforcement of attendance requirements and application of corrective and/or disciplinary actions.
- Appropriate corrective action is applied at the lowest level sufficient to address attendance concerns.
- Clear steps are followed so that supervisors and employees may discuss attendance problems affecting the department and its productivity and provide an opportunity for employees to correct attendance and timeliness deficiencies.

For purposes of this policy, the following definitions apply:

- Absence - an employee is away from work.
- Unauthorized Absence – an absence that the employee’s supervisor has not approved.
- Failure to Remain on Duty – leaving work during established work hours or exceeding an established break period without supervisor approval.
- Pattern of Absences – absences that occur with a common factor (day of week, day before/after holiday, etc.), at least 3 times within 6 months.
- Tardiness – failure to report to work at the assigned starting time.

Unauthorized Absence

An absence shall be considered “unauthorized” whenever the employee’s supervisor and/or department have not been properly notified and supervisor approval has not been given. Responsibility for excusing an unauthorized absence shall rest with the immediate supervisor who shall determine whether an employee’s explanation for the absence is reasonable. Supervisory discretion for corrective action shall be exercised depending on the severity of the violation. The supervisor should take into consideration any mitigating circumstances and the employee’s overall attendance record when deciding upon corrective action. An unexcused absence may be recorded as leave without pay at the discretion of the supervisor and upon approval by the President. Otherwise, it must be charged to the employee’s sick leave, annual leave, or personal leave, as appropriate. However, a supervisor may only designate an unapproved medical-related absence as “unauthorized” after gaining concurrence from the Director of Human Resources and approval from the President.

Failure to Remain on Duty

An incident of failure to remain on duty occurs when an employee does not obtain permission to leave the work site during scheduled work time or takes or exceeds a break period without authorization. Incidents of failure to remain on duty will be treated in the same manner as unauthorized absences.

Pattern of Absences

A pattern of absence exists when an employee’s absences occur with a common factor (day of week, day before/after holiday, etc.) at least 3 times within 6 months. For instance, an employee who is regularly absent from work on a Monday, a Friday, or the day before or after a holiday,

may be viewed as displaying a pattern of absence. Employees exhibiting a pattern of absences will be subject to corrective and/or disciplinary action.

Tardiness

All Marion Military Institute employees are expected to report for work on time as per the work schedule established by MMI and/or the immediate supervisor. When an employee fails to report to work at the specified start time, he or she is considered tardy. Tardiness will be considered excessive when it occurs more than 3 times in a given pay period for two or more consecutive pay periods. Excessive tardiness may be grounds for corrective action, and if it continues, disciplinary action may be taken, depending upon its severity, frequency, and impact on departmental work performance.

Employees who are chronically unable or unwilling to report to work on time present a hardship on other employees. Those employees who receive corrective action under this policy are expected to improve their attendance/punctuality. Failure to improve and/or sustain improvement shall result in the employee receiving disciplinary action.

Corrective Action

Corrective actions may include informal counseling, formal written counseling, performance evaluations, and/or pay adjustments. Formal written counseling shall be used by supervisors to notify the employee in writing of any “unauthorized” absence with rationale for the absence being declared “unauthorized” and any recommended corrective actions and/or future consequences if corrective actions are not taken. A copy of the completed and signed counseling form shall be placed in the employee’s personnel file. Other corrective actions may include pay adjustments. A recommended pay adjustment will be included in the written counseling and submitted to the President for approval as leave without pay.

Disciplinary Action

Disciplinary Action may be taken if absence/tardiness violations continue despite corrective actions. Disciplinary actions may include suspension without pay and/or termination.

POLICY 4.11: FACULTY QUALIFICATIONS

1. The credentials are organized according to teaching areas. The following groups are presented:

1.1. Group A. This group of requirements shall be used for instructors teaching credit courses in the following areas: humanities/fine arts; social/behavioral sciences; natural sciences/mathematics; and in professional and career technical areas that are components of associate degree programs designed for or usually resulting in college transfer to baccalaureate degree programs. This group is also used for instructors teaching credit courses that are not designed for or do not usually result in college transfer in cases where articulation agreements exist that require instructors to maintain Group A credentials for transfer.

1.2. Group B. This group of requirements shall be used generally for instructors teaching credit courses in professional and career technical areas that are components of associate degree programs, not usually resulting in college transfer to baccalaureate degree

programs. There are courses that do not usually result in college transfer, but that transfer under articulation agreements where instructors teaching those courses must be credentialed under Group A rather than Group B.

1.3. Group C. This group of requirements shall be used for instructors teaching credit courses in certificate programs.

2. All instructors will be "grandfathered" in their current rank and group placements.

2.1. Rank IV-Group A

2.1.1. Degree Requirement: Earned Doctorate

2.1.2. In-field Requirement:

Option (a) Earned doctorate in-field

Option (b) Fifty-four (54) graduate semester hours of coursework in the teaching field.

Option (c) (Accepted only when fifty-four (54) graduate semester hours of coursework in the teaching field is unavailable at any accredited institution of higher education.)

Fifty-four (54) graduate semester hours of course-work in a combination of teaching field, related field, and/or education.

Option (d) (Acceptable only when an instructor has two teaching assignments.) Thirty-six (36) graduate semester hours in a major teaching field with eighteen (18) graduate semester hours in a second teaching area.

2.2. Rank IV-Group B

2.2.1. Degree Requirement:

Option (a) Specialist degree (minimum thirty (30) graduate semester hours beyond the master's degree in a planned program) plus thirty (30) additional graduate semester hours.

Option (b) Specialist degree (minimum of thirty (30) graduate semester hours beyond the master's degree in a planned program) plus the equivalent of thirty (30) additional graduate semester hours as stipulated in 2.2.2. (c) below.

2.2.2. In-field Requirement

Option (a) Thirty-six (36) graduate semester hours in teaching field.

Option (b) (Acceptable only when thirty- six (36) graduate semester hours in the teaching field in unavailable at an accredited institution of higher education.) Thirty-six (36) graduate semester hours is a combination of the teaching field and/or related field; or, if unavailable, thirty-six (36) graduate semester hours in a combination of teaching field, related field, or education.

Option (c) Twenty-four (24) graduate semester hours in accordance with Option (a) or (b) above plus the equivalent of thirty (30) graduate semester hours of corporate or other external formal training as determined below:

The (30) graduate semester hours equivalent will be determined for each program area by the College.

2.2.3. Work Requirement

Three years of successful full-time experience as a practitioner in the vocational field and successful completion of an approved occupational examination (e.g., NOCTI) or approved certification within the first year of employment.

2.3.1. Degree Requirement:

Specialist degree (minimum of thirty (30) graduate semester hours beyond the master's degree in a planned program.)

2.3.2. In-field Requirement:

Option (a) Thirty-six (36) graduate semester hours in teaching field.

Option (b) (Acceptable only when thirty-six (36) graduate semester hours in the teaching field are unavailable at any accredited institution of higher education.) Thirty-six (36) graduate semester hours in a combination of teaching field and/or related field; or, if unavailable, thirty-six (36) graduate semester hours in a combination of teaching field, related field, and/or education.

Option (c) Six (6) graduate semester hours in accordance with Options (a) or (b) above plus the equivalent of thirty (30) graduate semester hours of corporate or other external formal training as determined below:

The thirty (30) graduate semester hours equivalent will be determined for each program area by the College.

2.3.3. Work Requirement

Six (6) years of successful full-time experience as a master craftsman/ journeyman in the vocational field with competency demonstrated through successful completion of an approved occupational examination (e.g., NOCTI) or approved certification within the first year of employment.

2.4 Rank III-Group A

2.4.1. Degree Requirement:

Specialist degree (minimum of thirty (30) graduate semester hours beyond the master's degree in a planned program) plus thirty (30) additional graduate semester hours.

2.4.2. In-field Requirement:

Option (a) Fifty-four (54) graduate semester hours in the teaching field.

Option (b) (Acceptable only when fifty-four (54) graduate semester hours in the teaching field is unavailable at any accredited institution of higher education.) Fifty-four (54) graduate semester hours in a combination of the teaching field and/or related field; or, if unavailable, thirty-six (36) graduate semester hours in a combination of teaching field, related field, and/or education.

Option (c) (Acceptable only when an instructor has two teaching assignments.) Thirty-six (36) graduate semester hours in a major teaching field with eighteen (18) graduate semester hours in a second teaching area.

2.5. Rank III -Group B

2.5.1 Degree Requirement:

Option (a) Specialist degree (minimum of thirty (30) graduate semester hours beyond the master's degree in a planned program).

Option (b) Master's degree plus the equivalent of thirty (30) graduate semester hours equivalent as stipulated in 2.5.2. (c) below.

2.5.2. In-field Requirements:

Option (a) Thirty-six (36) graduate semester hours in teaching field.

Option (b) (Acceptable only when thirty-six (36) graduate semester hours in the teaching field is unavailable at an accredited

institution of higher education.) Thirty- six (36) graduate semester hours in a combination of the teaching field and/or related field; or, if unavailable, thirty-six (36) graduate semester hours in a combination of teaching field, related field, or education.

Option (c) Fifteen (15) graduate semester hours in accordance with Options (a) or (b) above plus the equivalent of fifteen (15) graduate hours of corporate or other external formal training as determined below:

The fifteen (15) graduate semester hours equivalent will be determined for each program area by the College.

2.5.3. Work Requirement:

Three years of successful full-time experience as a practitioner in the vocational field and successful completion of an approved occupational examination (e.g., NOCTI) or approved certification within the first year of employment.

2.6.1. Degree Requirement:

Option (a) Master's Degree

Option (b) Baccalaureate degree plus the equivalent of thirty (30) additional graduate semester hours as stipulated in 2.6.2. (c) below.

2.6.2. In-field Requirement

Option (a) Eighteen (18) graduate semester hours in teaching field.

Option (b) (Acceptable only when eighteen (18) graduate semester hours in the teaching field are unavailable at an accredited institution of higher education.) Eighteen (18) graduate semester hours in a combination of teaching field and/or related field; or, if unavailable, eighteen (18) graduate semester hours in a combination of teaching field, related field, and/or education.

Option (c) The equivalent of thirty (30) graduate semester hours of corporate or other external formal training will be determined for each program area by the College.

2.6.3. Work Requirement:

Six (6) years of successful full-time experience as a practitioner in the vocational field and successful completion of an approved occupational examination (e.g., NOCTI) or approved certification within the first year of employment.

2.7. Rank II-Group A

2.7.1. Degree Requirement:

Specialist degree (minimum of a master's degree plus thirty (30) additional graduate semester hours in a planned program.

2.7.2. In-field Requirement:

Option (a) Thirty-six (36) graduate semester hours in the teaching field.

Option (b) (Acceptable only when thirty-six (36) graduate semester hours in the teaching field is unavailable at any accredited institution of higher education.) Thirty-six (36) graduate semester hours in a combination of teaching field and/or related field; or, if unavailable, thirty-six (36) graduate semester hours in a combination of teaching field, related field, or education.

Option (c) (Acceptable only when an instructor has two teaching assignments.)

Eighteen (18) graduate semester hours in a major teaching field with eighteen (18) graduate semester hours in a second teaching area.

2.8. Rank II-Group B

2.8.1. Degree Requirement:

Option (a) Master's Degree

Option (b) Baccalaureate degree plus the equivalent of thirty (30) graduate semester hours as stipulated in 2.8.2. (c) below.

2.8.2. In-field Requirement

Option (a) Eighteen (18) graduate semester hours in the teaching field.

Option (b) (Acceptable only when eighteen (18) semester hours in the teaching field is unavailable at an accredited institution of higher education.) Eighteen (18) graduate semester hours in a combination of teaching field and/or related field; or, if unavailable, eighteen (18) graduate semester hours in a combination of teaching field, related field, or education.

Option (c) The equivalent of thirty (30) graduate semester hours of corporate or other external formal training will be determined for each program area by the College.

2.8.3. Work Requirement:

Three (3) years of successful full-time experience as a practitioner in the vocational field with competency demonstrated through successful completion of an approved occupational examination (e.g., NOCTI) or approved certification within the first year of employment.

2.9. Rank II-Group C

2.9.1. Degree Requirement:

Baccalaureate Degree

2.9.2. In-field Requirement

Twenty-seven (27) semester hours in the teaching field or related field.

2.9.3. Work Requirement:

Six (6) years of successful full-time experience as a practitioner in the vocational field with competency demonstrated through successful completion of an approved occupational examination (e.g., NOCTI) or approved certification within the first year of employment.

2.10. Rank I-Group A

2.10.1. Degree Requirement:

Option (a) Master's Degree

Option (b) (Acceptable only for creative and applied arts and occupational programs.) Baccalaureate degree plus in-field requirements in 2.10.2. (c) below.

2.10.2. In-field Requirement

Option (a) Eighteen graduate semester hours in the teaching field.

Option (b) (Acceptable only when eighteen (18) graduate semester hours in the teaching field is unavailable at any accredited institution of higher education.) Eighteen (18) graduate semester hours in a combination of teaching field and/or related field; or, if unavailable, eighteen (18) graduate semester hours in a combination of teaching field, related field, or education.

Option (c) (Acceptable only for 1(b) above.) Bachelor's degree with twenty-seven (27) semester hours in the teaching field, documented professional competency, and three (3) years full-time experience in the occupational area.

2.11. Rank I-Group B

2.11.1. Degree Requirement:
Bachelor's Degree

2.11.2. In-field Requirement

Option (a) Twenty-seven (27) semester hours in the teaching field.
Option (b) Specialized coursework equivalent to the community or technical college program.

2.11.3. Work Requirement:

Three years of successful full-time experience as a practitioner in the occupational, technical, or vocational field.

2.12. Rank I-Group C

2.12.1. Degree Requirement:

Associate degree or equivalent (at least sixty (60) semester hours in a planned program including associate degree core).

2.12.2. In-field Requirement:

Specialized coursework equivalent to the community or technical college program.

2.12.3. Work Requirement:

Six (6) years of successful full-time experience as a practitioner in the vocational field with competency demonstrated through successful completion of an approved occupational examination (e.g., NOCTI) or approved certification within the first two years of employment.

2.13. Level 0-Group A: Level 0 is paid at Rank IB on the Salary Schedule.

(Instructors using these minimum requirements may only teach basic computation and communication skills in certificate programs or remedial courses.)

2.13.1. Degree Requirement:
Bachelor's Degree

2.13.2. In-field Requirement:

Twenty-seven (27) semester hours in the teaching field.

2.14. Level 0-Group B: Level 0 is paid at Rank IB on the Salary Schedule.

2.14.1. Degree Requirement:

Associate Degree

2.14.2. In-field Requirement

Major in assigned teaching area.

2.14.3. Work Requirement:

Three (3) years successful full-time experience as a practitioner in the occupational or technical field.

2.15. Level 0-Group C: Level 0 is paid at Rank IB on the Salary Schedule.

2.15.1. Degree Requirement:

Associate degree or equivalent (at least sixty (60) semester hours in a planned program including associate degree core.)

2.15.2. In-field Requirement

Specialized coursework equivalent to the community or technical college program.

2.15.3. Work Requirement:

Three (3) years successful full-time experience as a practitioner in the occupational or technical field.

Reference Alabama Community College System Policy 605.02 Faculty Qualifications

POLICY 4.12: FACULTY JOB RESPONSIBILITIES

The normal work week for a full-time instructor, librarian, or counselor shall be a minimum of 35 clock hours, exclusive of lunch and other regularly scheduled breaks. This does not mean that each instructor is to be on duty seven hours per day, but it does mean that each instructor is to have a regular schedule of instruction, office hours, advising, planning, and institutional duties. Faculty members are directly responsible to the appropriate Department Chair and the Chief Instructional Officer. Instructors are required to meet classes as scheduled and devote adequate planning time to provide quality instruction for the prescribed time. Classes begin on the first day of class each semester and should be taught the entire time period. Instructors are expected to conduct class in a professional manner and in a pleasant/helpful atmosphere. All classes will meet according to the time and date scheduled unless prior approval from the Chief Instructional Officer for change has been granted. Every attempt should be made by a faculty member to contact the Chief Instructional Officer prior to a scheduled class when that instructor anticipates being late or absent. Faculty anticipating absences should request approval of the Chief Instructional Officer. Faculty are required to disseminate an approved college-wide course syllabus to each student in each course at the beginning of the semester.

In keeping with the College's policy of assisting students and promoting student success, faculty members are encouraged to assist students outside of class whenever possible. This may entail arriving early and staying beyond the scheduled time for the class. All full-time and part-time faculty are required to post and maintain office hours. Faculty, unless an exception granted by the Chief Instructional Officer is in place, are required to serve as academic advisors.

Department Chairs are afforded a course release due to the non-teaching assignments performed by the chairs, per the guidance from the Alabama Community College System Board of Trustees Policy 608.01 and its associated procedures. Department Chairs are responsible for assisting the Chief Instructional Officer in curriculum development and review.

For a more detailed description of faculty duties, members should refer to the formal job description signed by them at their annual performance appraisal.

POLICY 4.13: INSTRUCTOR LOAD AND HOURS

Each full-time faculty instructor at any college under the authority, direction, and control of the Alabama Community College System shall teach 15 to 16 credit hours per term or the equivalent for the academic year, fall and spring semesters, at the College. In using the contact hour method of calculation typically for full-time technical faculty, no single faculty member shall have a direct student contact hour assignment that is less than 24 hours or exceeds 30 hours per week. Full-time faculty members must work a minimum of 35 hours per week. The duties of an instructor are determined by the President, in consultation with both the Chief Academic Officer and the Chief Instructional Officer, with consideration given to number of preparations, number of students taught, number of contact hours, and other collegiate responsibilities.

When a faculty member's teaching load reaches the threshold of 15 credit hours or the equivalent, he/she will be considered full-time and entitled to a full-time salary. Pursuant to ACCS Board of Trustees Policy 608.03, any instructional load of more than 15 to 16 credit hours or more than 30 contact hours constitutes an overload and must be approved by the President. Faculty members with an instructional load exceeding a full-time instructional load status shall be paid on the college's adjunct salary schedule for overload assignments.

The faculty must be available during regularly scheduled office hours which are at times other than scheduled classes. The times of the office hours are to be posted outside each faculty office and on the faculty member's course syllabi. The faculty member will inform the department chair of his/her office hours at the beginning of each semester.

Full-time faculty members will maintain a minimum of *ten office hours per week* and will also make provisions for meeting with students by appointment at a mutually convenient time beyond the stated office hours.

If, for any reason, a faculty member cannot meet the posted office hours, the faculty member will inform the Department Chair. If possible, the Department Chair will note the absence on the faculty office door.

Office hours should be scheduled at a time convenient for both students and colleagues, i.e., sometime between 7:30am and 5:00pm.

Reference Alabama Community College System Policy 608.01: Instructor Load and Hours, and Accompanying Guidelines

POLICY 4.14: OVERLOAD CLASSES AND UNDER-ENROLLED CLASSES

A full-time instructor may be employed to teach overload(s) per term for pay. The overload course(s) must be taught outside the normal work week of the instructor, and the pay must be at the prevailing part-time salary rate at the employing institution.

No full-time faculty member can be required to teach overload(s). Overloads will be at the discretion of the President, based on faculty desire, preparations required, non-instructional duties, and other considerations.

The Chief Instructional Officer reserves the right to cancel or combine low-enrollment classes for the purpose of effective scheduling.

Reference Alabama Community College System Policy 608.03: Instructor Overload and Accompanying Guidelines.

POLICY 4.15: FAIR LABOR STANDARDS ACT-OVERTIME

The Fair Labor Standards Act sets the federal minimum wage and requires that non-exempt employees be paid overtime at 1½ times the regular rate of pay for all hours worked over forty (40) hours in a work week. Non-exempt employees are employees whose positions do not meet the FLSA tests for exemption from the overtime provisions. Compensatory time (comp time) may be substituted for overtime pay at 1½ times the regular rate. For example: If an employee works two (2) hours overtime, they must be given three (3) hours of comp time. The law also provides for certain exemptions from overtime pay, including exemptions for executive, administrative, professional, and certain computer employees. To be exempt, an employee must generally satisfy three tests:

1. The employee must be compensated on a salary at a rate not less than \$684 per week.
2. The employee must be paid on a salary basis (i.e., the employee must regularly receive a predetermined amount that cannot be reduced because of variations in quantity or quality of work performed).
3. The employee must satisfy the duties test for the particular exemption (executive, administrative, professional, or certain computer employees).

For more information on the FLSA, go to the Department of Labor website at www.wagehour.dol.gov.

POLICY 4.16: COMPENSATORY TIME AND LEAVE POLICY

A. EXEMPT FT EMPLOYEES: Each President has authority on a local level to award compensatory time to exempt full-time employees when that employee physically works over 45 hours in one week if the President chooses to do so. Physical work hours do not include hours awarded for paid leave. If permitted by the President, exempt full-time employees may be awarded straight compensatory time, meaning for everyone hour

physically worked over 45 hours, the employee may receive one hour in compensatory time. The supervisor of the exempt full-time employee must keep track of all compensatory time earned and the exempt employee must use the time with supervisor approval within sixty days of it being accrued, else it is forfeited. Compensatory time is not paid for exempt employees at the time of separation at the College. When exempt fulltime employees do not work 40 hours each week, they are required to take compensatory time or appropriate accrued leave to make up for their failure to work 40 hours. Full-time exempt employees are required to work during the institution's regular business hours unless the employee has express permission from the supervisor to work outside regular business hours.

B. NON-EXEMPT FT EMPLOYEES: Non-exempt full-time employees are not permitted to work over 40 hours in one week, unless expressly required and approved by a supervisor. Non-exempt full-time employees who work over 40 hours without the express requirement and approval of their supervisor will be disciplined. Non-exempt full-time employees are entitled to overtime pay unless compensatory time is awarded instead when they physically work over 40 hours in one week (physical work hours do not include any paid leave time). It is the policy of ACCS that all institutions and entities shall award compensatory time rather than overtime to non-exempt full-time employees physically working over 40 hours in one week. Supervisors and non-exempt employees have a duty to work together to ensure that the employee does not work over 40 hours each week, absent emergency. In emergency situations where it is necessary for non-exempt employees to work over 40 hours in one week (and this has been required and approved by the supervisor), non-exempt employees must be given one and one-half hour for every hour physically worked over 40 in compensatory time, meaning if the employee works 44 hours in one week, then the employee receives 6 hours (4 x 1.5) in compensatory time. The supervisor of the nonexempt full-time employee must keep track of compensatory time and the non-exempt employee must use the time with supervisor approval within a reasonable period of it being accrued (recommend within the next month). Supervisors are responsible for ensuring that compensatory time is being taken by non-exempt full-time employees so that overtime is not required to be paid. Non-exempt full-time employees may not accrue more than 80 hours of compensatory time, and any time over and above 80 hours in compensatory time will be required to be paid as overtime. Compensatory time for full-time non-exempt employees will be converted to overtime and paid at the time of separation at the College.

Reference Alabama Community College System 610.01: Leave with Pay

POLICY 4.17: STUDENTS FIRST ACT

The Students First Act was recently adopted by the State of Alabama to replace the Fair Dismissal Act. The Students First Act is available online at <http://alisondb.legislature.state.al.us/acas/ACASLoginie.asp>

Once you access the page, follow these instructions to reach the Act.

1. Click Resources on the right of the screen.

2. Click “Code of Alabama” under Law.
3. Then, click view the “Code of Alabama”.
4. Scroll down and click on Title 16, EDUCATION.
5. Scroll down and click on Chapter 24C, STUDENTS FIRST ACT.

POLICY 4.18: GRIEVANCE PROCEDURE

The purpose of the Marion Military Institute (MMI) Employee Grievance Policy is to cover grievances between employees about general workplace issues, conduct, or professionalism. This policy does not apply and cannot be used against the President. This policy is not intended to cover complaints regarding discrimination, harassment, hostile work environment, ethical concerns, or other legal-related matters. This policy is to provide means for resolving grievances at the earliest possible time and at the most immediate level of supervision. All MMI employees have a right to file grievances without fear of censure or reprisal. All complaints will be handled in an impartial and timely manner.

“Grievance,” as used in this context, is limited to a complaint of an employee that involves the interpretation of, application of, or compliance with a college policy, procedure, rule or regulation pertaining to the employee’s employment conditions. The steps in the MMI Grievance Procedure are as follows:

1. Any employee who claims a grievance (or who is reporting an observed grievance) must file a written statement within ten (10) calendar days from the date of the alleged incident, otherwise the grievance will not be reviewed under this policy. Oral grievances do not comply with this policy. The written statement must be filed with the complaining employee’s direct supervisor, unless the direct supervisor is the person about whom the grievance is lodged. In such cases, the employee must file the statement with the next supervisor in line. The supervisor (or person receiving a written grievance) will notify Human Resources personnel and/or the President as appropriate.
2. The supervisor, or other person appointed to address the grievance, must review the written statement and conduct an investigation of the claims within forty-five (45) calendar days (or otherwise agreed), and then make a written report of findings with recommendations with sixty (60) calendar days of receipt of the grievance. The report must be given to the President, the complaining employee, and the person about whom the grievance is lodged. The complaining employee or person whom the grievance is lodged has five (5) calendar days from receipt of the written report to provide specific written objections to the report of findings with recommendations to the President, which will be considered by the President or his/her designee before issuing a final decision. The decision shall be final.
3. Any employee who brings a good faith grievance under this policy shall not be retaliated against in any manner. Any employee who retaliates against an employee for making a good faith grievance under this policy will be disciplined.

4. The President's decision will be final.

Reference Alabama Community College System Policy 620.01 Employee Grievance

POLICY 4.19: EMPLOYEE COMPLAINT

This policy is intended to cover employee complaints related to discrimination, harassment, hostile work environment, ethical concerns, and other legal-related matters against any person associated with MMI. This policy does not cover general workplace grievances, conduct, professionalism, or sexual harassment. This policy does not apply and cannot be used against the President.

1. Any employee who believes he/she has been subjected to or observed:
 - Discrimination based on race, color, national origin, religion, marital status, disability, sex, age or any other protected class as defined by federal and state law,
 - Harassment in forms other than sexual,
 - Hostile work environment,
 - Ethical violations or similar concerns,
 - Criminal acts,
 - MMI policy or procedure violations,
 - Or other legal-related issues.

by any person associated with MMI (other than President), shall report the action immediately, and in no event less than ten (10) calendar days following the event, to the Title IX Coordinator, Human Resources Director, or President. In conjunction with the report, the employee shall provide a written statement, as well as any evidence the employee believes substantiates the complaint, and shall be required to assist in an appropriate investigation.

2. MMI shall designate an appropriate person to review and investigate the matter and may engage legal counsel for this purpose, as determined by the President. This review and investigation shall be conducted promptly and within forty-five (45) calendar days if practical, but not later than sixty (60) days, unless this period is extended by agreement of the complaining and responding parties. The President or his/her designee shall issue a written response to the reporting employee within fifteen (15) calendar days if practical, but not later than thirty (30) days unless this period is extended by agreement of the complaining and responding parties; once the review and investigation has been completed, and this written response shall be final.
3. An employee who brings a good faith complaint under this policy shall not be retaliated against in any manner. Any employee retaliates against an employee for making a good faith complaint under this policy will be disciplined.

Reference Alabama Community College System Policy 620.02 Employee Complaint

POLICY 4.20: ACADEMIC FREEDOM

In the development of knowledge, research endeavors, and creative activities, faculty and students are free to cultivate a spirit of inquiry and scholarly criticism. Faculty members are entitled to freedom in the classroom in discussing discipline-related subjects but should be careful not to introduce into teaching controversial material which has no relation to the course. Faculty and students must be able to examine ideas in an atmosphere of freedom and confidence. At no time shall the principle of academic freedom prevent the College from taking proper initiatives to assure the best possible instruction for all students in accordance with the mission and objectives of the College.

POLICY 4.21: TITLE IX SEXUAL HARASSMENT COMPLAINT PROCEDURES

A. INTRODUCTION

Marion Military Institute is committed to providing a workplace and campus community free of sexual misconduct and harassment. As required by Title IX of the Education Amendments of 1972, the College does not discriminate on the basis of sex in its education programs and activities. This includes discrimination affecting employees of the college and applicants for employment, students and applicants for admission, or members of the public. All members of the College community are expected to conduct themselves in a manner that does not infringe upon the rights of others, whether on college premises or at any College owned off campus location and while participating in any educational program or activity of the College. Sexual harassment, which includes sexual misconduct and sexual assault, is a form of sex discrimination which is prohibited under Title IX of the Education Amendments of 1972 and the Violence Against Women Act. This policy is intended to reaffirm the College's commitment to address sexual harassment and take steps to prevent its reoccurrence and preserve or restore equal access to the College's education programs and activities. Dating violence, domestic violence, and stalking may also be considered forms of sexual discrimination. Due to the seriousness of these offenses, the College has adopted specific policies and procedures, outlined in the Student Handbook, employment policies, and webpage, to address alleged instances of sexual harassment, sexual misconduct, sexual assault, dating violence, domestic violence, and stalking. The College believes that no person should bear the effects of sexual harassment alone. When such conduct occurs, the College's paramount concern is for the safety and well-being of those impacted. To support and assist students, the College provides a range of resources that include a trained counselor.

Under Title IX, individuals reporting allegations related to sexual harassment and/or sexual violence, have the right to a resolution of their complaint, to have the college conduct a prompt, thorough and impartial investigation, and to receive supportive measures to ensure the safety and wellbeing of the individuals involved and the college community.

When allegations of sexual harassment and/or sexual violence in any form are brought to the attention of the Title IX Coordinator, and if a responding party is found to have violated this policy, serious sanctions will be used to prevent its reoccurrence. Marion Military Institute does not tolerate or condone retaliation. Individuals wishing to report sexual harassment and/or sexual

violence and/or to make inquiries concerning the application of Title IX at the College may contact:

Mrs. Carmon Fields (Employees)
Director of Human Resources and Compliance
1101 Washington Street
Marion, Alabama 36756
Phone: 334-683-2368
Email: cfields@marionmilitary.edu

Mrs. Carmon Fields (Students)
Title IX Coordinator
1101 Washington Street
Marion, Alabama 36756
Phone: 334-683-2368
Email: cfields@marionmilitary.edu

and/or

Assistant Secretary
U.S. Department of Education
Office for Civil Rights
Lyndon Baines Johnson Department of Education Building
400 Maryland Avenue, SW
Washington, DC 20202-1100
Telephone: 800-421-3481
Fax: 202-453-6012; TDD: 800-877-8339
Email: OCT@ed.gov (mailto: OCR@ed.gov)

Information regarding the Title IX Coordinator and their role will be provided to all faculty, staff, students, applicants for admissions, and applicants for employment. Also, this information is available on the College website at www.marionmilitary.edu under the Title IX webpage.
POLICY

The U.S. Department of Education's Office for Civil Rights (OCR) enforces, among other statutes, Title IX of the Education Amendments of 1972. Title IX protects people from discrimination based on sex in education programs or activities that receive Federal financial assistance. Title IX states that: "No person in the United States shall, on the basis of sex, be excluded from participation in, be denied the benefits of, or be subjected to discrimination under any education program or activity receiving Federal financial assistance."

B. DEFINITIONS RELATING TO SEXUAL HARASSMENT

Many terms are used in the context of sexual harassment. The following will provide some common definitions and examples.

Actual knowledge: The notice of sexual harassment or allegations of sexual harassment to the Title IX Coordinator or any official of the College who has authority to institute corrective measures on behalf of the College shall be deemed actual knowledge on the part of the College. Complainant: is an individual who is alleged to be the victim of conduct that could constitute sexual harassment. For the purposes of this procedure, a Complainant may be an individual applying for admission or employment, an employee, a student or an individual otherwise participating in or attempting to participate in the College's education programs and activities. Respondent: is an individual who has been reported to be the perpetrator of conduct that could constitute sexual harassment.

Formal complaint: is a document filed by the complainant or signed by the Title IX Coordinator alleging sexual harassment against a respondent and requesting that the College investigate the allegation of sexual harassment. Note: At the time of filing a formal complaint, a complainant must be participating in or attempting to participate in an educational program or activity of the College at which the formal complaint is filed.

Consent: "Consent" must be informed, voluntary, and mutual and can be withdrawn at any time. There is no consent when there is force, expressed or implied, or when coercion, intimidation, threats, or duress is used. Whether or not a person has taken advantage of a position of influence over another person may be a factor in determining consent. Silence or absence of resistance does not imply consent. Past consent to sexual activity with another person does not imply ongoing future consent with that person or consent to that same sexual activity with another person.

Incapacitation: An individual who is incapacitated is unable to give consent to sexual contact. States of incapacitation include sleep, unconsciousness, intermittent consciousness, intoxication, or any other state where the individual is unaware that sexual contact is occurring or is otherwise unable to give informed and voluntarily consent. Incapacitation may also exist because of a mental or developmental disability that impairs the ability to consent to sexual contact. Example: A person who is taking pain medication and falls asleep under the influence of the medication can be incapacitated and not be able to give consent to sexual contact.

Sexual Misconduct: Committing sexual abuse, sexual assault, sexual harassment, sexual exploitation, or statutory rape, as defined below or under Alabama state law.

Harassment: The striking, shoving, kicking, or otherwise touching or making physical contact in regard to another for the purpose of harassing, annoying or alarming; and/or directing abusive or obscene language or making an obscene gesture toward someone for the purpose of harassing, annoying, or alarming. Example: Making or using persistent derogatory comments, epithets, or slurs that place a person in a hostile or fearful environment or where the person's safety is in jeopardy.

Sexual harassment: Conduct on the basis of sex that satisfies one or more of the following:

- A school employee conditioning education benefits on participating in unwelcome sexual conduct (i.e. quid pro quo);

- Unwelcomed conduct that a reasonable person would determine is so severe, pervasive, and objectively offensive that it effectively denies a person equal access to the school's education program or activity; or
- Stalking, dating violence, or domestic violence.

Definitions of Sexually Based Offenses

Sexual abuse in the first degree:

- a. A person commits the crime of sexual abuse in the first degree if:
 1. He subjects another person to sexual contact by forcible compulsion; or
 2. He subjects another person to sexual contact who is incapable of consent by reason of being physically helpless or mentally incapacitated.
- b. Sexual abuse in the first degree is a Class C felony (Alabama Code 13A-6-66).

Sexual abuse in the second degree:

- a. A person commits the crime of sexual abuse in the second degree if:
 1. He subjects another person to sexual contact who is incapable of consent by reason of some factor other than being less than 16 years old; or
 2. He, being 19 years old or older, subjects another person to sexual contact who is less than 16 years old, but more than 12 years old.
- b. Sexual abuse in second degree is a Class A misdemeanor, except that if a person commits a second or subsequent offense of sexual abuse in the second degree within one year of another sexual offense, the offense is a Class C felony (Alabama Code 13A-6-67).

Rape in the first degree:

- a. A person commits the crime of rape in the first degree if:
 1. He or she engages in sexual intercourse with a member of the opposite sex by forcible compulsion; or
 2. He or she engages in sexual intercourse with a member of the opposite sex who is incapable of consent by reason of being physically helpless or mentally incapacitated; or
 3. He or she, being 16 years or older, engages in sexual intercourse with a member of the opposite sex who is less than 12 years old.
- b. Rape in the first degree is a Class A felony (Alabama Code 13A-6-61).

Rape in the second degree:

- a. A person commits the crime of rape in the second degree if:
 1. Being 16 years old or older, he or she engages in sexual intercourse with a member of the opposite sex less than 16 and more than 12 years old; provided, however, the actor is at least two years older than the member of the opposite sex.
 2. He or she engages in sexual intercourse with a member of the opposite sex who is incapable of consent by reason of being mentally defective.
- b. Rape in the second degree is a Class B felony (Alabama Code 13A-6-62).

Sodomy in the first degree:

- a. A person commits the crime of sodomy in the first degree if:

1. He engages in deviate sexual intercourse with another person by forcible compulsion; or
 2. He engages in deviate sexual intercourse with a person who is incapable of consent by reason of being physically helpless or mentally incapacitated; or
 3. He, being 16 years old or older, engages in deviate sexual intercourse with a person who is less than 12 years old.
- b. Sodomy in the first degree is a Class A felony (Alabama Code 13A-6-63).

Sodomy in the second degree:

- a. A person commits the crime of sodomy in the second degree if:
 1. He, being 16 years old or older, engages in deviate sexual intercourse with another person less than 16 and more than 12 years old.
 2. He engages in deviate sexual intercourse with a person who is incapable of consent by reason of being mentally defective.
- b. Sodomy in the second degree is a Class B felony (Alabama Code 13A-6-64).

Domestic Violence:

Includes felony or misdemeanor crimes of violence committed by a current or former spouse of the victim, by a person with whom the victim shares a child in common, by a person cohabitating with or has cohabitated with the victim as a spouse, or by any other person against an adult or youth victim who is protected from that person's acts under the domestic or family violence laws of the jurisdiction (34 U.S.C.12291(a)(8)).

In Alabama, domestic violence includes felony and misdemeanor crimes of violence committed by a current or former spouse, parent, child, any person with whom the defendant has a child in common, a present or former household member, or a person who has or had a dating or engagement relationship with the defendant (Alabama Code Section 13A, Article 7 Domestic Violence in 1st, 2nd, and 3rd Degrees).

Dating Violence: Means violence committed by a person

- a. Who is or has been in a social relationship of a romantic or intimate nature with the victim; and
- b. Where the existence of such a relationship will be determined based on a consideration of the following factors:
 - The length of the relationship,
 - The type of relationship,
 - The frequency of interaction between the persons involved in the relationship (34 U.S.C.12291(a) (10)).

In Alabama, dating violence is covered under Alabama Code Section 13A, Article 7 Domestic Violence in 1st, 2nd, and 3rd Degrees.

Stalking: Means engaging in a course of conduct directed at a specific person that would cause a reasonable person to a) fear for his or her safety or the safety of others; or b) suffer substantial emotional distress 34 U.S.C.12291(a) (30).

In Alabama, stalking is when a person intentionally and repeatedly follows or harasses another person and who makes a threat, either expressed or implied, with the intent to place that person in reasonable fear of death or serious bodily harm (13A-6-90 Stalking in the first degree) or a person who, acting with an improper purpose, intentionally and repeatedly follows, harasses, telephones, or initiates communication, verbally, electronically, or otherwise, with another person, any member of the other person's immediate family, or any third party with whom the other person is acquainted, and causes material harm to the mental or emotional health of the other person, or causes such person to reasonably fear that his or her employment, business, or career is threatened, and the perpetrator was previously informed to cease that conduct (Section 13A-6-91 Stalking in the second degree).

Sexual assault: Means an offense classified as a forcible or non-forcible sex offense under the uniform crime reporting systems of the Federal Bureau of Investigation 20 U.S.C.1092 (f)(6)(A)(v).

Victims Option to Report

Students and employees who are victims of crime including rape, acquaintance rape, domestic violence, dating violence, sexual assault, or stalking, are encouraged by the College to report but do have the option not to report the incident to campus law enforcement, or local law enforcement. In those cases, the victim may still seek assistance confidentially from Family Sunshine Center at 334-263-0218 or any other victim service agency of their choosing.

Formal Complaint Process

A. INITIAL STEPS

Any student or employee of the College or applicant for employment or admission who has a complaint against a student or a member of the College faculty, staff, or administration concerning sexual harassment (Title IX of the Educational Amendments of 1972) or has knowledge of any conduct constituting sexual harassment in an educational program or activity of the College or which occurred on property owned by the College or controlled by the College should report the complaint to the campus Title IX Coordinator www.marionmilitary.edu . An educational program or activity of the College includes, but is not limited to locations, events or circumstances over which the College exercised substantial control over both the respondent and the context in which the sexual harassment occurs, and also includes buildings owned or controlled by a student organization that is officially recognized by the College.

B. REPORTING A COMPLAINT

Any individual may report sexual harassment incident to Title IX Coordinator in person, by email, by telephone, or in writing. The report must include the names of the Complainant(s) and Respondent(s), approximate date of incident, facts of the incident, and contact information for the person submitting the complaint.

The Title IX Coordinator will respond in writing to the person submitting the complaint as soon as practicable, but not exceeding five (5) business days. If the person submitting the complaint is

not the Complainant, the Title IX Coordinator will also contact the Complainant within five (5) business days.

If after a discussion with the Complainant, the Title IX Coordinator determines that the complaint does not qualify as a Title IX Complaint, the Title IX Coordinator will notify the Complainant in writing and may redirect the Complaint to the appropriate committee.

If after a discussion between the Complainant and the Title IX Coordinator, the Title IX Coordinator determines that the complaint meets the criteria of a Title IX Complaint and the Complainant requests to file a formal complaint, the Title IX Coordinator will initiate the formal complaint process.

C. SUPPORTIVE MEASURES

Supportive measures mean non-disciplinary, non-punitive individualized services offered as appropriate, as reasonably available, and without fee or charge to the complainant or the respondent before or after the filing of a formal complaint or where no formal complaint has been filed. Such measures are designed to restore or preserve equal access to the College's education program or activity without unreasonably burdening the other party, including measures designed to protect the safety of all parties or the College's educational environment or deter sexual harassment. Supportive measures may include counseling, extensions of deadlines or other course-related adjustments, modifications of work or class schedules, campus escort services, mutual restrictions on contact between the parties, changes in work or housing locations, leaves of absence, increased security and monitoring of certain areas of the campus, and other similar measures. The College must maintain as confidential any supportive measures provided to the complainant or respondent, to the extent that maintaining such confidentiality would not impair the ability of the College to provide the supportive measures. The Title IX Coordinator is responsible for coordinating the effective implementation of supportive measures. Supportive measures will be offered to the Complainant within five (5) business days of receipt of the complaint.

Supportive measures will be offered to the Respondent simultaneously with the Notice of Allegations.

D. STANDARD OF EVIDENCE FOR DETERMINING RESPONSIBILITY

For the purposes of College Title IX procedures, the College will use a "preponderance of evidence" standard for determining responsibility. Preponderance of the Evidence means evidence which is of greater weight or more convincing than the evidence which is offered in opposition to it; that is evidence which as a whole show that the fact sought to be proved is more probable than not.

E. FORMAL COMPLAINT PROCESS

A formal complaint must be submitted in electronic (email) or written format to the Title IX Coordinator and must be signed by the Complainant. In the event that under the circumstances a formal complaint should be pursued notwithstanding a Complainant's desire not to file a formal complaint, the Title IX Coordinator may sign the complaint. The complaint must include the following:

- the date of the original complaint,

- names of Complainant and Respondent,
- facts and description of the complaint, and
- the request to investigate complaint.

A Complainant must be participating in or attempting to participate in a College sponsored program or activity at the time the complaint is filed.

F. DIMISSAL OF FORMAL COMPLAINT

The College may dismiss a formal complaint or allegations therein if:

- the Complainant informs the Title IX Coordinator in writing that the Complainant desires to withdraw the formal complaint or allegations therein,
- the Respondent is no longer enrolled or employed by the school, or
- specific circumstances prevent the school from gathering sufficient evidence to reach a determination.

The College must dismiss a formal complaint or allegations therein if:

- the allegations do not meet the definitions of sexual harassment
- the alleged conduct did not occur within the United States, or
- the alleged conduct did not occur within a College-sponsored program or activity.

If the College determines the formal complaint or allegations therein will be dismissed, the Title IX Coordinator will provide written notice to both parties of the dismissal of allegations, and the reason for dismissal within five (5) business days of the decision to dismiss the complaint.

G. NOTICE OF ALLEGATIONS

The Title IX Coordinator will provide simultaneous written notice of allegations, including sufficient details, and intent to investigate to the Complainant and Respondent no later than ten (10) calendar days after receipt of the formal complaint. The Title IX Coordinator will also provide both parties with the formal complaint, grievance and appeal process, possible sanctions and remedies, and availability of advisors. The written notice shall include a statement that the respondent is presumed not responsible for the alleged conduct, that the parties and their advisors may review and inspect evidence, and advise the parties of the provisions of the College Code of Conduct relating to making false statements or submitting false information during the grievance process.

The Title IX Coordinator will additionally notify the Title IX investigator of the pending investigation and provide a copy of the formal complaint.

H. ADVISORS

In addition to providing the Complainant and Respondent with written notice of allegations and intent to investigate, the Title IX Coordinator will inform the parties of the availability of advisors. Both parties shall have the right to retain, at the respective party's own cost, the assistance of legal counsel or other personal representative advisor. In the alternative, either or both parties may also request an advisor provided by the College.

Only an advisor may conduct cross-examination during the live hearing.

Neither party may dismiss a College appointed advisor.

I. INVESTIGATION PROCEDURE

The Title IX investigator is responsible for conducting an investigation of the submitted formal complaint. The Title IX investigator will have received Title IX investigator training within the current academic year.

The burden of proof and the burden of gathering evidence sufficient to reach a determination regarding responsibility rest on the College and not on the parties.

The Title IX investigator will notify the Complainant and Respondent in writing of the intent to investigate within five (5) business days of receipt of the formal complaint and will commence interviews within ten (10) business days of receipt of the formal complaint. The Title IX investigator will notify the Complainant and Respondent and their respective advisors in writing of all individuals the investigator intends to interview.

Either party may identify other witnesses with relevant information for interview or other evidence for review by the investigator.

The Title IX investigator will conduct a factual investigation of the formal complaint and shall research applicable statutes, regulations, and/or policies, if any. The Title IX investigator will notify any interviewees in writing of the intent to interview. Interviewees will have at least five (5) business days' notice of an interview. Notice will include the participants, date, place, purpose, and time of the interview.

The College will provide an equal opportunity for the parties to present witnesses, including fact and expert witnesses, and other inculpatory (tending to establish fault or guilt) and exculpatory (clearing or tending to clear from alleged fault or guilt) evidence. Creditability determinations may not be based on a person's status as a complainant, respondent or witness.

The College will provide the parties with the same opportunities to have others present during any grievance proceeding, including the opportunity to be accompanied to any related meeting or proceeding by the advisor of their choice, who may be, but is not required to be, an attorney, and not limit the choice or presence of advisor for either the complainant or respondent in any meeting or grievance proceeding; however, the College may establish restrictions regarding the extent to which the advisor may participate in proceedings, as long as the restrictions apply equally to both parties.

The College will provide both parties an equal opportunity to inspect and review any evidence obtained as part of the investigation that is directly related to the allegations raised in a formal complaint, including the evidence upon which the College does not intend to rely in reaching a determination regarding responsibility and inculpatory or exculpatory evidence whether obtained from a party or other source, so that each party can meaningfully respond to the evidence prior to conclusion of the investigation.

The College will make all such evidence subject to the parties' inspection and review available at any hearing to give each party equal access opportunity to refer to such evidence during the hearing, including for purposes of cross-examination.

Prior to the completion of the investigative report, the Title IX investigator will submit all reviewed evidence to the Title IX Coordinator.

The Title IX Coordinator will provide copies of all evidence reviewed during the investigation to the Complainant, Respondent, and their respective advisors. All parties will have ten (10) business days to review the evidence and respond in writing to the Title IX Coordinator. Subsequent to the ten (10) business day review period, the Title IX Coordinator will direct any responses from the Complainant, Respondent, or their respective advisors to the Title IX Investigator for additional review. The Title IX Investigator will submit a final report and the reviewed evidence to the Title IX Coordinator. At least 10 days prior to the live hearing, the Title IX Coordinator will simultaneously provide the Complainant, Respondent, their respective advisors, with the final report and all reviewed evidence for their review and written response. The President will select a Hearing Officer to conduct the live hearing. The Hearing Officer shall be provided a copy of the investigative report and reviewed evidence.

J. LIVE HEARING PROCEDURE

Upon receipt of the final investigative report, the Hearing Officer will convene a Decision Maker panel and schedule a live hearing. The panel will consist of three (3) individuals selected by the Hearing Officer who have completed Decision Maker training during the current academic year. The Hearing Officer will designate one of the Decision Makers as Primary Decision Maker. Hearing Officer will notify the Complainant, Respondent, their respective advisors, Title IX Coordinator, Title IX Investigator, witnesses named in the final report, and the Decision Makers of the live hearing date within five (5) business days of receipt of the final investigative report. The live hearing date must provide the Complainant, Respondent, and their respective advisors with no less than ten (10) business days to review the final investigative report and all supporting evidence. (NOTE: A Hearing Officer may be utilized in addition to the Hearing Decision Maker(s).)

The hearing must be a live, recorded hearing with the opportunity for both advisors to conduct cross-examinations. The hearing shall be recorded by either a court reporter or on audio or video tape or by other electronic recording medium. In addition, all items offered into evidence by the parties, whether admitted into evidence or not, shall be marked and preserved as part of the hearing record.

Upon request, the Complainant and Respondent may participate in the hearing via on-campus video conferencing provided that all parties, including the Decision-Making Panel, are able to see and hear the party or witness answering questions in real-time.

The Hearing Officer, Decision Makers, Complainant, Respondent, and their respective advisors will attend the hearing. The Title IX investigator, Title IX Coordinator and witnesses will be called to provide testimony if requested by the Decision Makers, parties or their respective advisors.

If a party does not have an advisor present at the live hearing, the College shall provide without fee or charge to that party, an advisor of the College's choice, who may be, but is not required to be an attorney.

The hearing process will consist of:

- Opening statement by Hearing Officer
- Review of hearing procedures, formal complaint and notice of allegations by Hearing Officer
- Review of potential hearing outcomes and sanctions by Hearing Officer
- Complainant Testimony
- Cross-examination of Complainant by Respondent advisor
- Testimony of Witnesses of Complainant
- Cross-examination of Complainant Witnesses by Respondent advisor
- Respondent Testimony
- Cross-examination of Respondent by Complainant advisor
- Witnesses of Respondent Testimonies
- Cross-examination of Respondent Witnesses by Complainant advisor
- Decision Maker inquiries
- Review of appeal process by Hearing Officer
- Closing statement by Hearing Officer
- Dismissal of parties
- Decision Maker deliberations

At the hearing, the Hearing Officer shall read the hearing procedures, notice of allegations, formal complaint, potential hearing outcomes, and potential sanctions. After the Hearing Officer concludes opening statements, the Complainant shall have the opportunity to present such oral testimony and offer such other supporting evidence as deemed relevant to the formal complaint. Subsequent to Complainant testimony, the Respondent advisor may conduct cross-examination. The Decision Makers may question the Complainant after the cross-examination.

The Complainant may call witnesses to provide testimony as deemed appropriate to the formal complaint. The Respondent advisor may conduct cross-examination of the witnesses. The Decision Makers may question the witnesses after the cross-examination.

The Respondent shall then be given the opportunity to present such testimony and offer such other evidence as deemed relevant to the Respondent's defense against the formal complaint. Subsequent to Respondent testimony, the Complainant advisor may conduct cross-examination. The Decision Makers may question the Respondent after the cross-examination.

The Respondent may call witnesses to provide testimony as deemed appropriate to the formal complaint. The Complainant advisor may conduct cross-examination of the witnesses. The Decision Makers may question the witnesses after the cross-examination.

Only relevant cross-examination and other questions may be asked of a party or witness.

During cross-examination, the advisor will pose each question orally to the Primary Decision Maker. The Primary Decision Maker will determine if the Complainant, Respondent, or witnesses may respond to the question. If the Primary Decision Maker chair determines that the question is not relevant, the Primary Decision Maker will explain the rationale for dismissing the question. Rape shield protection is provided for Complainants which deems irrelevant questions and evidence about a Complainant's prior sexual behavior unless offered to prove that someone other than the Respondent committed the alleged misconduct or if the questions and evidence concern specific incidents of Complainant's prior sexual behavior with respect to the Respondent and offered to prove consent.

Decision Makers cannot draw an inference about the determination regarding responsibility based solely on a party or witness's absence from the live hearing or refusal to answer cross-examination or other questions.

Upon conclusion of the presentation of the evidence and cross-examinations, the Hearing Officer shall read the appeal process and closing statements. The Complainant, Respondent, their respective advisors and all witnesses shall be dismissed.

The Decision Makers will deliberate to determine if the Respondent is deemed responsible and submit a written hearing report which contains:

- identification of the allegations potentially constituting sexual harassment;
- a description of the procedural steps taken from the receipt of the formal complaint through determination, including any notifications to the parties, interviews with parties and witnesses, site visits, methods used to gather other evidence, and hearings held;
- findings of fact supporting the determination;
- conclusions regarding the application of the College's code of conduct to the facts;
- a statement of, and rationale for, the result as to each allegation, including a determination regarding responsibility, any disciplinary sanctions the College imposes on the respondent, and whether remedies designed to restore or preserve equal access to the College's education program or activity will be provided by the College to the complainant; and
- the College's procedures and permissible bases for the complainant and respondent to appeal.

The Primary Decision Maker will submit the hearing report to the Hearing Officer within ten (10) business days of the live hearing.

The Hearing Officer will submit the hearing report simultaneously to the Title IX Coordinator, Complainant, Respondent, and their respective advisors within three (3) business days of receipt of the hearing report.

The College must provide the written determination to the parties simultaneously. The determination regarding responsibility becomes final either on the date that the College provides the parties with the written determination of the result of the appeal, if an appeal is filed, or if an appeal is not filed, the date on which an appeal would no longer be considered timely.

The Title IX Coordinator will retain the recording of the hearing, the hearing report, the investigative report, and all evidence obtained during the investigation and all evidence offered at the hearing.

K. APPEAL PROCEDURE

Appeals of a determination regarding responsibility and from the College's dismissal of a formal complaint or any allegations therein are available to both parties on the following grounds: (1) procedural irregularity that affected the outcome of the matter; (2) new evidence that was not reasonably available at the time the decision regarding responsibility or dismissal was made, that could affect the outcome; and/or (3) the Title IX Coordinator, Investigator, or a Decision Maker had a conflict of interest or bias that affected the outcome.

The President of Marion Military Institute or his/her designee shall be the appeal authority in upholding, rejecting, or modifying the recommendations of the Decision Maker Panel. The President or his/her designee shall not be bound in any manner by the recommendation(s) of the Decision Maker Panel, but shall take it (them) into consideration in rendering his/her decision. Either party may file a written request with President requesting that the President review the decision of the Decision Maker Panel. The written request must be filed within ten (10) business days following the party's receipt of the hearing report. If the appeal is not filed by the close of business on the tenth (10th) business day following the party's receipt of the report, the party's opportunity to appeal shall have been waived.

As to all appeals, the College will:

- notify the other party in writing when an appeal is filed and implement appeal procedures equally for both parties;
- ensure that the decision-maker(s) for the appeal is not the same person as the decision-maker(s) that reached the determination regarding responsibility or dismissal, the investigator(s), or the Title IX Coordinator.
- ensure the decision-maker(s) for the appeal complies with the standards set for in 34 C.F.R. § 160.45(b)(iii);
- give both parties a reasonable, equal opportunity to submit a written statement in support of, or challenging, the outcome;
- issue a written decision describing the result of the appeal and the rationale for the result; and
- provide the written decision simultaneously to both parties.

A decision on a party's appeal shall be rendered within 30 calendar days of the initiation of the appeals process. The time for decision may be extended for exigent circumstance or as may be otherwise agreed by the parties.

If the Respondent is also an employee of the College, the individual may also file a claim with the Equal Employment Opportunity Commission within 180 days of the alleged discriminatory act.

Informal Resolution. The College may not require as a condition of enrollment or continuing enrollment, or employment or continuing employment, or enjoyment of any other right, waiver

of the right to an investigation and adjudication of formal complaints of sexual harassment consistent with this section. Similarly, the College may not require the parties to participate in an informal resolution process under this section and may not offer an informal resolution process unless a formal complaint is filed. However, at any time prior to reaching a determination regarding responsibility the College may facilitate an informal resolution process, such as mediation, that does not involve a full investigation and adjudication, provided that the College does the following:

- i. provides to the parties a written notice disclosing: the allegations, the requirements of the informal resolution process including the circumstances under which it precludes the parties from resuming a formal complaint arising from the same allegations, provided, however, that at any time prior to agreeing to a resolution, any party has the right to withdraw from the informal resolution process and resume the grievance process with respect to the formal complaint, and any consequences resulting from participating in the informal resolution process, including the records that will be maintained or could be shared;
- ii. obtains the parties' voluntary, written consent to the informal resolution process; and
- iii. does not offer or facilitate an informal resolution process to resolve allegations that an employee sexually harassed a student.

L. RETALIATION PROHIBITED.

Neither the College nor other person may intimidate, threaten, coerce, or discriminate against any individual for the purpose interfering with any right or privilege secured by Title IX, or because the individual has made a report or complaint, testified, assisted, or participated in any manner an investigation, proceeding, or hearing conducted under this policy. Complaints alleging retaliation may be filed according to the grievance procedures included in the formal complaint process. The College shall keep confidential the identity of any individual who has made a report or filed a formal complaint of sexual harassment, any complainant, any individual who has been reported to be the perpetrator of sex discrimination, any respondent, and any witness except as may be permitted by FERPA statute, 20 U.S.C. 1232g or FERPA regulations, 34 CFR part 99, or as required by law, or to carry out the purposes of 34 CFR part 106, including the conduct of any investigation, hearing, or judicial proceeding arising thereunder.

Range of Possible Sanctions – On final determination of responsibility the following sanctions may be imposed against a respondent:

For Students:

Category III Offenses – Commandant Adjudicated. These offenses are considered extremely serious and will generally warrant dismissal consideration.

- i. Assault (of a sexual nature or otherwise)
- ii. Breaking into another cadet's room
- iii. Harassment (of a sexual nature, stalking, or otherwise)
- iv. Hazing (or failure to report such)
- v. Possession of drug paraphernalia including synthetic urine
- vi. Possession of firearms, weapons, or explosives
- vii. Use of racial slurs including drawings and gestures

- viii. Use, possession, or sale of illegal drugs or controlled substances
- ix. Use, possession, or sale of an intoxicant
- x. Vandalism/theft of school property. Will also include a fine of at least the cost of replacing/repairing the damage, to include labor.
- xi. Theft of personal or public property
- xii. Pattern of misconduct (4 or more Delinquency Orders)
- xiii. Honor Code Violations

Category III penalties for infractions will include a delinquency order plus any of the following as deemed appropriate:

- 1. Counseling
- 2. Reduction in rank
- 3. Penalty Hours (10-20 PH) **
- 4. Restriction to campus
- 5. Referral to local law enforcement authorities
- 6. Dismissal or expulsion
- 7. Any combination of the above

For Employees:

Employees who are found in violation of this policy shall be disciplined as deemed appropriate by the investigating authority and College President, to include suspension or possible termination.

For Individuals other than employees or student:

- 1. A no trespass order may be issued for individuals who have been accused of and/or found in violation of sexual harassment.
- 2. A no contact order may be issued for individuals who have been accused of and/or found in violation of sexual harassment.

At any time in the grievance process the College may impose a temporary delay or limited extension of time frames for good cause with written notice to the complainant and the respondent of the delay or extension and the reasons for the action. Good cause may include considerations such as the absence of a party, a party's advisor, or a witness, concurrent law enforcement activity, or the need for language assistance or accommodation of disabilities. Neither the College assigned Investigator or Decision Makers and any person who facilitates an informal resolution process shall require, rely upon, or otherwise use questions or evidence that constitute or seek disclosure of information protected under a legally recognized privilege, unless the person holding such privilege has waived the privilege.

The College's Title IX Coordinators, Investigators, Decision Makers shall all have received training for their respective roles prior to participating in a Title IX Complaint or grievance process. All materials used to train the Title IX Coordinators, Investigators, Decision Makers and any person who facilitates an informal resolution process may be found on the College's website at www.marionmilitary.edu.

Reference: Alabama Community College System Board of Trustees 620.03 Sexual Harassment Complaints

4:22 POLITICAL ACTIVITY

Marion Military Institute personnel are encouraged to participate actively and freely as citizens in their community. However, no employee may use his or her position or scheduled work hours for political purposes, nor shall the employee use any college property, equipment, or facilities for any political activity. Prior to seeking election or appointment to a political office, the employee must give notice to the appropriate administrator and to the President.

POLICY 4.23: COPYRIGHT POLICY

Marion Military Institute is committed to fostering an environment that provides for the fair use of copyrighted works to achieve these goals while remaining in compliance with applicable laws. MMI users of copyrighted works are afforded the rights and privileges pursuant to 17 U.S.C. §§107 (Fair Use), 108 (Reproduction by Libraries and Archives), 109 (First Sale Doctrine and Transfers), 110 (Teaching Exception) and other statutory exemptions and limitations to the exclusive rights granted to the owner of a copyright protected work. While MMI does not intend to unduly restrict the use of works otherwise permitted under law, it is the policy of Marion Military Institute to comply with federal copyright law and all related law codified at 17 U.S.C. §101 et seq. All faculty, staff, and students must adhere to MMI copyright policy and are expected to seek consultation and advice from the Baer Memorial Library Staff when using the copyrighted works of others. It is the policy of MMI to inform and educate faculty, students, and staff regarding federal copyright law, the rights of copyright owners, the legal obligation of MMI to comply with applicable law, and the rights of the MMI community to use copyrighted works. The actual text of the law can be found at <http://www.copyright.gov/title17/>.

POLICY 4.24: OUTSIDE EMPLOYMENT

In compliance with Alabama Community College System Board of Trustees 615.01 and Accompanying Guidelines, Marion Military Institute requires annual notification and approval of any employee's outside employment. An employee should not engage in, without approval of the College President, any outside employment, which would, (1) disrupt or interfere with operations of the College, (2) directly compete with the College, (3) impose additional financial burden upon the College, (4) violate the Alabama Code of Ethics for public employees (as set forth in the CODE OF ALABAMA), or (5) be of a nature, character, or subject matter such that the outside employment, when considered in the light of the employee's position and duties with the College, would tend to decrease the effectiveness of an employee in performing his/her employment duties.

An employee who is considering outside employment must complete the "Request for Approval of Outside Employment" form (Appendix C) and submit the completed form for review and approval by the President via his/her immediate supervisor and appropriate senior staff member prior to beginning secondary (outside) employment. It is the responsibility of the employee to notify the College by submitting a revised "Request for Approval of Outside Employment" form

if the status of a previously approved secondary employment changes. If no change occurs with the previously approved secondary employment, the employee is required to annually re-submit the form for review and approval.

Reference: Alabama Community College System Board of Trustees 615.01: Conflict of Interest

POLICY 4.25: EVALUATION PROCEDURES

All college personnel are to be evaluated annually. Faculty evaluation procedures include student assessment, self-assessment, and assessment by the Department Chairperson or the Chief Instructional Officer. Administrative and support personnel shall be evaluated each year by their immediate supervisors. The immediate supervisor for all supervisors who evaluate will also review and sign the evaluation documents. Executive and Senior Staff are evaluated by the MMI President.

It is expected that the supervisor will prepare the evaluation and conduct a formal evaluation review with the personnel being evaluated (See Appendix D for copies of the MMI evaluation forms). Where appropriate, the supervisor and the employee will develop a plan to improve any areas that are not satisfactory. The plan will be recorded on the evaluation document. Progress on the plan may be reviewed with the employee throughout the year, but progress will certainly be noted on the next annual evaluation.

All employees will be asked to sign their evaluation document, indicating that the evaluation has taken place.

POLICY 4.26: RESIGNATIONS

So that the business of the College may continue and service to cadets is uninterrupted, all faculty and staff shall provide written notice of resignation at least fourteen (14) calendar days prior to the effective date of resignation, except as approved by the President. Failure to do so may result in documentation being placed in the employee's personnel file about the failure to follow policy and may affect your ability to be rehired by MMI.

Reference: Alabama Community College System Policy 617.01 Resignations

POLICY 4.27: EMPLOYEE CONDUCT CODE

In the interest of creating and maintaining an educational environment in which teaching and learning are optimized and in which each employee maximizes his/her effectiveness, Marion Military Institute has outlined the following conduct code. This code, which is applicable to all employees, lists behaviors that are prohibited. Violations of the code may result in reprimand, suspension, and/or dismissal. The conduct code is subject to all provisions of the Alabama Community College System Board of Trustees Policies.

As specified in applicable ACCS Board of Trustees Policy, the following activities are prohibited. The relevant Board of Trustees is listed beside of each activity.

- a. Sexual harassment (Board of Trustees 620.03)
- b. Use of tobacco products on campus (Board of Trustees 514.01)
- c. Possession of firearms, dangerous chemicals, or other dangerous weapons on campus or at college functions (Board of Trustees 511.01)
- d. Absence from work without approved leave (Board of Trustees 618.01)
- e. Disclosure of confidential information (Board of Trustees 616.01 and 808.01)
- f. Failure to report for duty at the beginning of a semester (Board of Trustees 618.01)
- g. Pursuit of individual interest resulting in a conflict with the interest of the College (Board of Trustees 615.01)
- h. Discrimination based on race, color, national origin, religion, age, disability, marital status, or gender (Board of Trustees 601.01, 601.02, and 601.04)
- i. Use of official position and influence to further personal gain or that of a family member or personal associate (Board of Trustees 615.01)

Additionally, the forms of conduct listed below are prohibited.

- a. Theft
- b. Tardiness
- c. Disruptive conduct
- d. Sleeping on the job
- e. Abuse of equipment or facilities
- f. Violation of published safety regulations
- g. Use of abusive or threatening communications
- h. Unauthorized use of equipment, facilities, or other resources
- i. Physical or verbal abuse of persons within the College community
- j. Possession or use of alcohol except as approved by the President or his designee for specified social activities or events
- k. Possession or use of controlled substances on campus
- l. Any form of fraud, dishonesty, or falsification of student records, employment applications, or records maintained in performance of job duties
- m. Inappropriate contributions to blogs, message boards, and/or social networking or content-sharing sites
- n. Posting of any personal notices through attachment to campus property or through college email

POLICY 4.28: PROFESSIONAL ATTIRE

Marion Military Institute employees serve as role models for the students with whom they work and as leaders in the community. All employees, therefore, should dress in a manner and have an appearance that is appropriate and professional. Members of the MMI faculty and staff who wear civilian attire rather than a uniform are expected to dress in a manner appropriate for their job function and working environment, and in a manner that reflects respect for the professional formality inherent in the uniforms cadets are required to wear every day.

In this regard, and in line with the military environment of MMI and high standards of professionalism this environment implies, faculty and staff dress code for male and female faculty and staff members should follow the principles of professionalism and conservatism. This is especially the case in the classroom and for occasions in the Chapel, when blazers and ties are suggested for the men. A neat, sharp, professional appearance is the goal for all members of MMI's faculty and staff, each of whom is expected to serve as an example to the Corps of Cadets and the community of MMI's high standards of professional conduct.

Staff and faculty who retired from or are former members of the US Armed Forces, or who are currently serving in the National Guard or a Reserve component of a military service may wear their military uniform so long as they meet their service's requirements for uniform wear. Uniform wear may be specifically prescribed for current, and retired or former military personnel assigned to the Office of the Commandant and the Office of Enrollment Management as recommended by the respective Department supervisor and approved by the MMI President so long as no service prohibition applies.

Any questions regarding appropriate dress should be directed to the employee's immediate supervisor.

POLICY 4.29: PHONES AND ELECTRONIC DEVICES

Classrooms, labs, libraries, and other work areas are inappropriate sites for personal telephone or electronic communication device use. Personal use of phones, pagers, and electronic devices should be kept to a minimum and should not interrupt the normal operation of the College. For purposes of this policy, the term "cell phone" is defined as any handheld electronic device with the ability to receive and/or transmit voice, text, or data messages without cable connection including, but not limited to, cellular telephones, digital wireless phones, radio-phones/walkie-talkies, telephone pagers, PDAs (personal digital assistants with wireless communications capabilities), and/or RIM ("research in motion") wireless devices.

Excessive personal calls or texts during the workday interferes with employee productivity and is distracting to others. Personal calls should be kept to a minimum and should not interrupt normal operations of the College. These calls should be made and received during non-work time whenever possible, and employees should ensure that their friends and family members are instructed of this policy.

If an employee chooses to bring a personal cell phone on campus, the College is not liable should it be lost, stolen, or damaged.

POLICY 4.30: FIELD TRIPS

Faculty or staff planning a field trip must request approval from his or her immediate supervisor. If possible, this request must be submitted to the Chief Instructional Officer and Commandant at the beginning of the semester during which the field trip is planned. A faculty member or group sponsor employed by the College must accompany the students.

SECTION 5

EMPLOYEE BENEFITS

POLICY 5.1: TEACHER RETIREMENT SYSTEM

Under 1975 Legislative Act No. 1108, The Full-Time Public Education Act, all permanent full-time employees of any public institution of learning in the State shall become members of the Teacher Retirement System as a condition of employment. The employee's contribution of his or her earnings is refundable upon termination. Information on the Teacher Retirement System is available at www.rsa-al.gov/TRS.trs.html. Permanent part-time employees who work 20-39 hours per week are also eligible to participate in the Teacher Retirement System.

POLICY 5.2: INSURANCE

Full-time employees and permanent part-time non-instructional employees working twenty (20) or more hours per week are entitled to a State allocation, the amount to be legislated annually. Permanent part-time instructional employees are also eligible for a pro rata allocation. An employee receives the insurance allocation for each month as long as that employee is in pay status at least one-half of the working days of the month. The allocation goes toward the basic hospital/medical plan offered by the Public Education Employee's Health Insurance Plan (PEEHIP) or the optional plans (vision, dental, etc.) offered by PEEHIP.

POLICY 5.3: LEAVES WITH PAY

1. General Rules

- 1.1 The immediate supervisors are responsible for assuring that leave approvals in their areas of responsibility are reported timely and accurately.
- 1.2 All employees engaged in outside employment or other activities during their normal work hours must use accrued compensatory time or request personal, annual, or unpaid leave.
- 1.3 Any accrued leave, excluding compensatory time, must be used concurrently with FMLA leave. All accrued leave, excluding compensatory time, must be exhausted before an employee is entitled to unpaid FMLA leave.
- 1.4 A leave year for earning, accrual, and use of leave by employees is September 1 through August 31.

2. Annual Leave

Earned annual leave may be taken at appropriate times as approved in advance by the appropriate supervisory chain of command. Annual leave shall be requested and approved prior to its occurrence. Annual leave may be denied if it is not timely requested or hampers the routine operations of the college.

Employees eligible to accrue annual leave are those compensated from Salary Schedules A, B, C, E, and H (prorated). Employees compensated from Salary Schedule H shall receive annual leave under the same terms and conditions as other eligible employees, except a "day" of annual leave shall be as follows: four (4) hours for employees compensated from Schedule H-20, five (5) hours for employees compensated from Schedule H-25, six (6) hours for employees compensated from Schedule H-30, and seven (7) hours for employees compensated from Schedule H-35.

2.1. The official table for determining annual leave accrual is as follows:

Years of Experience	Annual Leave Earned
0-4	1.00 day per month, equivalent to 8 hours
5-9	1.25 days per month, equivalent to 10 hours
10-14	1.50 days per month, equivalent to 12 hours
15-19	1.75 days per month, equivalent to 14 hours
20-above	2.00 days per month, equivalent to 16 hours

A "year of service" shall be a completed year of service at the current employing entity, not based on experience or service at other employers.

- 1.2. All new hires at MMI will begin accrual of annual leave under this policy at 0 years of service, with one exception: The President, upon request of a new employee within the first 90 days of employment, may award additional years of service for annual leave accrual purposes to an employee who has been hired directly from one ACCS college or the ACCS system office to an ACCS college with no time lapse between dates of employment. The years of service awarded by the President under this exception cannot be more than the number of years that the employee was employed at the ACCS system office or prior ACCS institution. This policy is not applicable to employee hires from any other location or entity. The President is not required to award any additional years of service under this policy.
- 1.3. In order to move to the next year of service for annual leave accrual purposes, an employee must have worked at least nine months of the leave accrual year. As an example, if a new employee is hired on January 2, then that employee will not have worked 9 months by September 1 of the same year (when the annual leave rate changes occur) and will be required to wait until the following year to move to the next year of service).

- 1.4. Employees must be in paid status for a minimum of one-half of the work days in the month of employment to accrue a day of annual leave (except those under FMLA leave).
- 1.5. A maximum of 60 days of annual leave may be accrued and carried forward into each September. Earned annual leave may be taken at appropriate times as approved in advance by the President or designee. Annual leave may exceed 60 days during a year; however, annual leave exceeding 60 days earned but not taken by September 1 is forfeited.
- 1.6. Any employee who leave employment of MMI will be paid for the actual number of annual leave days earned and not used up to a maximum of sixty (60) days. Payment of annual leave will be based on the employee's salary in effect at the time of separation.
- 1.7. If an employee who is eligible to accrue annual leave assumes a regular (non-temporary) assignment on the D or local salary schedules where annual leave is not earned or accrued, payment for the unused portion of the accrued annual leave will be made at the conclusion of the eligible assignment and will be based on the eligible salary schedule upon request of the employee.
- 1.8. Annual leave is not provided for Salary Schedule D or L personnel.

2. Court Attendance

Full-time employees of System colleges who are required by a court to attend such court in the capacity of jurors or witnesses under subpoena will be granted special leave with pay to attend such court.

4. Military Leave

- 4.1. All full-time and Schedule H employees (as prorated) who are active members of military services, including the National Guard and Reserve forces, are eligible for paid military leave of up to 168 hours per calendar year. A copy of the orders must be presented to the Office of Human Resources prior to taking military leave. During the period of paid military leave, the respective employee shall continue to accrue all employment benefits, including sick and annual or personal leave, as well as paid medical insurance benefits. Once available paid military leave is exhausted, the employee may be considered on military leave of absence without pay. Employees on unpaid leave of absence under this section do not accrue benefits but may choose to continue health insurance coverage by paying the designated premiums.

5. Personal Leave

- 5.1. Personnel Employed on Salary Schedules A, B, C, E, and H

Up to two (2) days of personal leave with pay will be granted to each full-time employee on the above salary schedules during any leave year. Up to two days per year of personal leave is extended to all support personnel on Salary Schedule H as above, with a "day" defined as four (4) hours for persons paid from Salary Schedule H-20, five (5) hours for persons paid from Salary Schedule H-25, six (6) hours for persons paid from Salary Schedule H-30, and seven (7) hours for persons paid from Salary Schedule H-35. Personal leave is noncumulative. A reason for personal leave is not required. However, personal leave with pay shall be requested prior to its occurrence. Personal leave will not be paid on resignation or termination of employment.

5.2. Personnel Employed on Salary Schedule D

Up to five (5) days of personal leave with pay will be granted to each full-time employee on the first day of each academic year. Personal leave is noncumulative. A reason for personal leave is not required. However, personal leave with pay shall be requested prior to its occurrence. Personal leave will not be paid on resignation or termination of employment.

5.3. Unused Personal Leave

Personal leave not taken will be converted at the end of the leave year to sick leave. Election by the employee otherwise requires timely written notice by the employee to the College.

5.4. Employees who are not employed at the beginning of the leave year will accrue personal leave on a prorated basis based on their starting date.

6. Professional Development Leave

- 6.1 Professional Development leave with pay may be granted to any full-time employee when approved by the President based on the availability of funds, the absence will not hamper the normal routine operations of the college, and the event is directly tied to the employee's current or anticipated job duties.
- 6.2. A maximum of ten workdays per leave year may be approved locally, but more than 10 days shall only be granted upon written approval of the Chancellor.
- 6.3. Professional Development leave is typically a direct personal benefit to the employee. Examples include but are not limited to leadership programs, training and workshops, local, state, and national board positions or assignments, accreditation activities unrelated MMI.
- 6.4. If an employee who was granted professional development leave separates from the college within one year of the professional development event, the employee is required to reimburse the college for any funds expended on behalf of the employee.

MMI may deduct these amounts from an employee's paycheck. The President may elect not to require reimbursement due to special circumstances, such as separation due to medical reasons or layoffs.

- 6.5. Approved activities sponsored by MMI are part of the employee's regularly assigned duties and are not a type of leave.

7. Sick Leave

- 7.1. Accumulation of sick leave will be governed by Section 16-1-18.1, Code of Alabama of 1975, as amended. An employee may accumulate an unlimited amount of sick leave days in accordance with Ala. Code 16-1-18.1.
- 7.2. Sick Leave Definition. Sick leave is defined as the absence from regular duty by an employee for one of the following reasons: personal illness, pregnancy, maternity leave, or doctor's quarantine; medical examinations and appointments; personal injury which incapacitates the employee; to provide care for an ill member of the immediate family (husband, wife, father, mother, son, daughter, brother, sister) of the employee or for an individual with a close personal tie to the employee; death of a member of the family of the employee (husband, wife, father, mother, son, daughter, brother, sister, father-in-law, nephew, niece, granddaughter, grandson, grandfather, grandmother, aunt, uncle); or illness, injury, or death of an individual not legally related to but having unusually strong personal ties with the employee. For purposes of application of this policy, an individual with a close or unusually strong personal ties exist due to an employee's having been supported or educated by a person; father-in-law; mother-in-law; son-in-law; daughter-in-law; brother-in-law; sister-in-law; nephew; niece; granddaughter; grandson; grandfather; grandmother; aunt; uncle.
- 7.3. Each full-time employee employed on Salary Schedules A, B, C, and E, shall earn one day of sick leave which is equivalent of 8 hours per month of employment. The maximum accumulated sick leave is authorized pursuant to Section 16-1-18.1, *Code of Alabama* of 1975, as amended.
- 7.4. Each full-time employee employed on Salary Schedule H shall earn one day of sick leave per month of employment with a "day" defined as 4 hours of person on H-20, 5 hours for persons on H-25, 6 hours for persons on H-30, and 7 hours for persons on H-35. Employees on H will be required to request the amount of sick leave equal to the normal amount of hours worked each week for absences totaling an entire work week.
- 7.5. Each full-time employee employed on Salary Schedule D shall earn one day of sick leave which is equivalent to 7 hours per month of employment to a maximum of nine days or 63 hours during the academic year (fall and spring semesters) and up to a maximum of three days or 21 hours during the summer term. Employees on D will be required to request 35 hours of sick leave for absences totaling an entire work week.

- 7.6. Any unused balance of sick leave accumulated at the end of the leave year will be carried forward to the next succeeding year.
- 7.7. Employees must be in paid status for one-half of the work days in the month of employment to accrue a day of sick leave (except those on FMLA leave).
- 7.8. Sick leave may be utilized during the employment period. However, sick leave may not be utilized to extend the employment period.
- 7.9. The employee's immediate supervisor may request that an employee provide a medical certification by a licensed healthcare provider at the expense of the employee. After three (3) consecutive absences due to illness or after five (5) occurrences due to illness, within a thirty (30) calendar-day period, the President or designee may require that an employee furnish a medical certificate by a licensed healthcare provider. This is to be done at the expense of the employee. When medical certifications are required, requests for sick leave may be denied if the medical certification is not provided.
- 7.10. Sick leave will not be paid upon separation of employment.
- 7.11. For purpose of applying accrued sick leave as credit for retirement purposes, an employee is limited to the amount allowed by law and the Teachers Retirement System.
- 7.12. Transfer of Sick Leave: Sick leave earned while employed by an Alabama Public School System, higher education institutions in Alabama, or the Alabama Community College System may be transferred to MMI in accordance with Alabama Code Section 16-1-18.1.

Earned sick leave days which have been accrued by an employee are transferrable between the following: all public city and county school systems; the Board of Trustees of the Alabama Institute for the Deaf and Blind; the Alabama Youth Services Department District in its capacity as the Board of Education for the Youth Services Department District; The Board of Directors of the Alabama School of Fine Arts; the Board of Trustees of the Alabama High School of Mathematics and Science; the Alabama State Senate; the Lieutenant Governor, the Office of the Senate Pro Tempore; The Speaker of the House of Representatives; the Alabama House of Representatives; the Legislative Reference Service; any organization participating in the Teachers' Retirement System (excluding state governmental departments not expressly listed); The Board of Trustees for ACCS; and all public four-year institutions of higher education.

The President may permit sick leave transfers from other Alabama State government departments not listed above who participate in the Retirement System of Alabama at his discretion, however the factors taken into consideration in exercising such discretion must be consistently applied.

8. Sick Leave Bank

- 8.1 The President shall establish, upon the request of 10 percent of full-time employees, a sick leave bank plan.
- 8.2 Any sick leave bank shall be operated, managed, and governed by a Sick Leave Bank Committee pursuant to Alabama Code Section 16-22-9 and any accompanying procedures in place by the President.
- 8.3 The purpose of the Sick Leave Bank shall be to provide a loan of sick leave days for its participating members or catastrophic leave after a member's accrued and compensatory leave has been exhausted, if warranted as determined by the Sick Leave Bank Committee.
- 8.4 The Sick Leave Bank Committee will be comprised of five persons, one will be the President or President's designee, and four employees will represent the participating members.

A. Election of Sick Leave Bank Committee

1. The President shall be responsible for conducting elections in a fair and equitable manner, ensuring the confidentiality of the secret balloting process. See Ala. Code 16-22-9(c).
2. At the beginning of each scholastic year, an election shall be held among the sick leave bank members to determine by secret ballot the four members who are to serve on the sick leave bank committee. Those four members receiving the most votes shall serve on the Sick Leave Bank Committee.
3. The term of office for these four Committee members shall be one year. No representative on the Committee shall serve longer than five (5) consecutive years. If a vacancy occurs during the one-year term which needs to be filled, the remaining Committee members (inclusive of the President) shall vote on a person to fill the vacancy and whoever receives the most votes may fill the seat.
4. The President or President's designee shall be appointed as the Chair of the Committee and shall appoint one of the other Committee members to take minutes of meeting and all Committee action.
5. In the event of any election tie, the President or his designee has the authority to break the tie.
6. Committee meetings may be schedule as determined by the Committee, or as set by the President, or by the written request of three consenting Committee members to the President.

B. Duties of the Committee

1. The Committee shall establish procedures providing for the uniform administration of the sick leave bank.
2. The Committee shall develop guidelines for the operation of the sick leave bank. The guidelines shall be approved by a secret ballot vote of the participating members of the sick leave bank.
3. The Committee shall develop all necessary forms for the orderly operation and administration of the sick leave bank.
4. The Committee shall maintain copies of its guidelines, administrative procedures, and forms and immediately provide those upon adoption to the President's Office.
5. The Committee shall ensure that accurate records of contributors eligible to participate in the bank are maintained and shall work with college to maintain records of all member contributions to the sick leave bank, withdrawals from the bank, and the status of the bank.
6. The Committee shall review all applications for loans from the sick leave bank and make appropriate decisions on request for approval of such loans. The Committee has the discretion to deny an application for a loan or approve less days than requested. Factors to be considered include, but are not limited to: need, circumstances of the illness or disability, years of service to the college, availability of days in the bank, the ability of the applicant to repay the loan, and prior awards obtained from the sick leave bank.

C. Guidelines of the Committee

1. The sick leave bank plan allows members to deposit an equal number of days (not to exceed three) of earned sick leave into the sick leave bank. The days deposited shall be available to be loaned to any participating member whose leave has been exhausted and who has been granted a loan by the Committee.
2. No member employee is allowed to borrow or obtain catastrophic leave from the sick leave bank unless all accrued and compensatory leave time has been exhausted.
3. A member of the sick leave bank shall not be allowed to accumulate more days than allowed in Alabama Code 16-1-18.1, including days in the sick leave bank. Ala. Code 16-22-9 (g)(4).
4. Employee membership in the sick leave bank shall be voluntary.
5. Any alleged abuse of the bank shall be investigated by the Committee (or its designee). On a finding of wrongdoing, the abusing member shall repay all of the sick leave credits drawn from the sick leave bank and be subject to appropriate disciplinary action as determined by the college.

6. Upon retirement or transfer of a member, days on deposit with the sick leave bank shall be withdrawn and transferred with the employee or made accessible for retirement credit, as allowable. Ala. Code 16-22-9 (g)(7).
7. At the beginning of each leave year or upon employment of a new employee, the appropriate number of sick leave days shall, upon application of the employee, be credited to the employee's account, in order to enable the employee to join the sick leave bank if the employee does not have the minimum number of sick leave days to enable the employee to join the sick leave bank.
8. Open Enrollment will be from September 1 through September 30 of each year for non-participating members. Employees who did not join the sick leave bank will have an option to join upon deposit of the prerequisite number of sick leave days during the open enrollment period established by the Committee.
9. Additional guidelines may be adopted by the Committee as deemed appropriated provided they are uniformly applied to all employees and do not conflict with these guidelines and procedures

D. Sick Leave Bank Loan Procedures

1. An employee must apply for sick leave bank loan in the form required by the Committee and is subject to all applicable procedures and guidelines adopted by MMI and the Committee. In cases where the member has been incapacitated, a member's agent or representative designated as such in writing, may apply to the Committee on behalf of the member. In case of mental incapacity of a member, the designated agent or representative must be a person who, by law, may serve in such capacity.
2. In order to apply for a sick leave bank loan: (a) an employee must be a member of the sick leave bank and (b) an employee must have exhausted all accrued and compensatory leave available.
3. The Committee determines whether a loan request will be approved or denied and, if approved, for how many days up to a maximum of thirteen (13) days (or up to twenty (20) days upon a majority vote of the membership) per event. Factors to be considered in making these decisions include, but are not limited to: need, circumstances of the illness or disability, years of service to the college, availability of days donated, ability to repay the loan, and prior awarded loans.
4. Sick leave days borrowed from the sick leave bank shall be repaid to the sick leave bank monthly as re-earned by the member.

5. Upon the separation of an employee who has an outstanding loan of sick leave days, the value of the loan shall be deducted from the final paycheck at the employee's prevailing rate of pay. If portions of the loan remain outstanding after separation, the employee is responsible for paying the remaining value to the college.

E. Catastrophic Leave Procedures

1. A catastrophic event is defined as any illness, injury, or pregnancy or medical condition related to childbirth certified by a licensed physician which causes the employee to be absent from work for an extended period of time.
2. Beginning January 1, 2019, no employee may be awarded more than forty-five (45) work days of catastrophic leave during any five-year period of employment.
3. An employee must apply for catastrophic leave in the form required by the Committee and is subject to all applicable procedures and guidelines adopted by MMI and the Committee. In order to apply for Catastrophic Leave: (a) an employee must be a member of the sick leave bank at the time the catastrophic event occurs in order to be considered for catastrophic leave; (b) an employee must have exhausted all accrued and compensatory leave available, (c) the employee must provide certified evidence by a licensed physician of an illness (defined as an unhealthy condition of the body or the mind, a sickness, or disease), or of an injury (defined as physical harm to a person), or of a medical condition related to childbirth that causes the employee to be absent from work for a period greater than fifteen (15) work days, and (d) the employee must have applied, borrowed, and used the maximum number of sick leave days loaned by the Committee.
4. The Committee determines whether a request for catastrophic leave will be approved or denied and, if approved, for how many days up to the maximum. Factors to be considered in making these decisions include, but are not limited to: need, circumstances of the illness or disability, years of service at MMI, availability of days donated, whether it is a personal event to the employee, and prior awards of loans or catastrophic leave.
5. Employees, at their discretion, may donate a specific number of days to the sick leave bank, up to a maximum of 30 days for any one employee, to be designated for a specific employee for use against a catastrophic event. Alabama Code 16-22-9(h).
6. Employees must be a member of the sick leave bank to donate or receive catastrophic leave.

7. A donating employee shall not be required to donate a minimum number of catastrophic days to the sick leave bank.
8. The recipient employee may use catastrophic sick leave days for himself or herself or for other covered persons as provided in Code of Alabama 16-1-18.1. Alabama Code 16-22-9(h).
9. Catastrophic days awarded are not required to be repaid. Alabama Code 16-22-9(h).
10. Donated catastrophic leave days may be used to repay days loaned by the sick leave bank to the credit of the affected member. Alabama Code 16-22-9(g)(8).
11. Employees who donate sick leave days to the sick leave bank for a particular employee's catastrophic event are not to be returned to the donor unless the days are not used. Alabama Code 16-22-9(h).
12. If a catastrophic leave is approved by the Committee, the Committee shall notify members of the applying employee's request and approval for catastrophic leave one time. The Committee has no further obligation to continue requesting donations on the applying employee's behalf. The Committee may but is not required, no more than once per month, to communicate by email to the members to advise that the employee is approved for catastrophic leave and could use further donations.
13. There is no guarantee that, if catastrophic leave requests are approved by the Committee, the sick leave bank members will donate any leave or sufficient leave to cover an employee's absence related to a catastrophic event.
14. Catastrophic leave is not available for on-the-job injuries.

9. Transfer of Sick Leave

Sick leave earned while employed by a local Alabama public school system, higher education public institutions in Alabama, or the Alabama Community College Systems may be transferred into a two-year college upon employment. The transfer of sick leave is limited to the number of days authorized by statute for two-year postsecondary education institutions.

10. Institutional Support Leave

- 10.1. Institutional support leave with pay may be approved by the President for any full-time employee based on the availability of funds and if the absence will not hamper the normal routine operations of the college. Institutional support leave is related to the employee's expertise and/or position of

employment. Institutional support leave directly benefits the college and the employee's participation is requested by the college.

- 10.2. Examples of institutional support leave include but are not limited to business and industry partnerships with the college, grant-specified training, community partnerships through the college, accreditation activities related to employee's college, etc.
- 10.3. Any activity requiring more than five (5) regularly scheduled workdays of institutional support leave during the leave year will require the Chancellor's written approval.
- 10.4. Approved activities sponsored by ACCS or the employee's college are part of the employee's regularly assigned duties and are not a type of leave.

Reference Alabama Community College System Policy 610.01: Leaves with Pay.

POLICY 5.4: LEAVES WITHOUT PAY

1. General Rules

- A. Requests for leave are to be made via the established procedures at the college or entity. Each college or entity is directed to establish local procedures for requests, approvals, and use of leave including maintenance of appropriate records. The immediate supervisors are responsible for assuring that leave approvals in their areas of responsibility are reported timely and accurately.
- B. Time spent on unpaid leave will not count in computing the amount of time worked during a given academic year.
- C. Time spent on unpaid leave will not be counted in computing tenure or non-probationary status.
- D. Employees who are in an approved leave without pay status are not eligible to continue to receive leave accruals or benefits, unless covered by the Family Medical Leave Act (FMLA).
- E. Except as provided under these policies, no employee shall be in an unpaid employment status with any ACCS college or entity. Being in an unauthorized unpaid employment status is a violation of policy and may result in disciplinary action, including termination. It is an employee's responsibility to monitor his or her own leave accounts and approvals to ensure he/she is not in an unauthorized unpaid employment status.

2. Maternity Leave

All full-time employees and Salary H employees of a System college will be granted up to a maximum of six (6) consecutive calendar months of maternity leave without pay for the birth or adoption of a child. All accrued leave including compensatory leave unless in FMLA status must be exhausted before an employee is entitled to request unpaid maternity leave.

3. Personal Leave

The Chancellor may grant up to six (6) months of personal leave without pay to a full-time employee or Schedule H employee on the written request of the President to the Chancellor based on special circumstances. Such request shall state that the leave without pay will not hamper the normal routine operation of the College. All accrued leave and compensatory time must be exhausted before an employee is entitled to request unpaid personal leave.

4. *Family and Medical Leave Act Leave*

The Alabama Community College System Board of Trustees and the colleges and entities under its direction and control shall with the requirements of the Family Medical Leave Act (FMLA). Any accrued leave except compensatory time, must be used concurrently with FMLA leave and must be exhausted before an employee is entitled to unpaid FMLA leave.

The *Family and Medical Leave Act I* (FMLA) was passed by Congress to balance demands of the work place with needs of families, promote stability and economic security of families, and promote national interests in preserving family integrity; minimize the potential for employment discrimination on the basis of gender by ensuring generally that leave is available for eligible medical reasons (including maternity-related disability) and for compelling family reasons; and promote the goal of equal opportunity for women and men.

It is the policy of Marion Military Institute to comply with the applicable provisions of the Family Medical Leave Act. MMI's FMLA leave year is September 1-August 31.

- A. All provisions of the Family and Medical Leave Act will be followed as they relate to Leave occurrences for individuals meeting the eligibility requirements. Each system institution will comply with the FMLA. FMLA entitles eligible employees to take unpaid, job-protected leave for specified family and medical reasons with continuation of employment benefits under the same terms and conditions as if the employee had not taken leave. Benefits of FMLA leave laws include, but are not limited, to the following:
 - i. Job Protection. An employee who takes FMLA leave is guaranteed the right to return to the same or similar position with equivalent pay, benefits, and other employment terms and conditions upon return.
 - ii. Benefit Protection. Insurance coverage is maintained, and no accrued benefits can be lost by taking FMLA leave.
 - iii. An employee on FMLA leave does not need to use leave in one block. When it is medically necessary or otherwise permitted, employees may take leave intermittently or on a reduced schedule to deal with a serious health condition.
 - iv. The college or entity will not interfere with an employee's FMLA rights or retaliate against someone for using or trying to use FMLA leave, opposing any practice made unlawful by the FMLA, or being involved in any proceeding under or related to the FMLA.

- B. Eligibility. To be eligible for FMLA benefits, an employee must have been employed by the college or entity for a total of twelve (12) months from the date on which any FMLA leave is to begin and must have worked at least one thousand two hundred fifty (1,250) hours over the previous twelve (12) month period. These guidelines generally do not cover temporary employees. However, if a temporary employee is extended beyond one (1) year, the employee would be covered if the employee had worked at least one thousand two hundred fifty (1,250) hours during the previous twelve (12) month period.

Reference Alabama Community College Policy 611.01: Leaves Without Pay.

POLICY 5.5: EMPLOYEE-DEPENDENT TUITION ASSISTANCE

1. Full-time employees and Salary Schedule H employees of system colleges are eligible for tuition assistance for courses taught for credit by community and technical colleges under the control of the Alabama Community College System Board of Trustees, when applicable, Athens State University.
2. Definitions, eligibility requirements, and procedures for implementing such tuition assistance shall be set out in guidelines established by the Chancellor of the Alabama Community College System. See attached guidelines as specified by the Chancellor.
3. The Tuition Waiver Form can be found in Appendix F of this handbook.

GUIDELINES FOR ALABAMA COMMUNITY COLLEGE SYSTEMS BOARD OF TRUSTEES 612.02: TUITION ASSISTANCE

I. GENERAL

This tuition waiver program is designed for all full-time benefits eligible employees, retirees, and benefits eligible H Salary Schedule employees of The Alabama College System and the Alabama Community College System Office and their dependents as defined under Section II. This program will not include non-benefits eligible, temporary, or part-time employees, or persons serving as independent contractors to any of the Alabama Community College System colleges or entities or to the Alabama Community College System office.

The program will be coordinated by each college for employees within The Alabama College System and the System Office.

An application form for the tuition assistance program is available at each college and should be completed prior to registration for classes. A copy of the completed form must be maintained by the employing college and the college offering courses (if different).

II. DEFINITIONS

A. Employee:

1. Any full-time benefits eligible employee of any Alabama Community College System college or entity;
2. Any benefits eligible employee of the Alabama Community College System office;
3. Any benefits eligible Salary Schedule H employees of any Alabama Community System college or entity.

B. Retiree:

1. Any employee who has twenty-five (25) years or more of continuous service in The Alabama Community College System or the Alabama Community College System office and retires from The Alabama Community College System or the Alabama Community College System office;
2. Any employee who retires from the Alabama Community College System or the Alabama Community College System office under disability retirement.

C. Dependent:

1. The spouse of any eligible employee or retiree;
2. The unmarried children of any eligible employee or retiree residing in the household of the employee or retiree, residing in the household of the employee's or retiree's former spouse, or residing in temporary housing while enrolled in college such as college dormitories, apartments, and student housing;
3. The unmarried stepchildren of any eligible employee or retiree residing in the household of the employee or retiree;
4. A legal ward (a minor child placed by the court under the care of a guardian) when the guardian is a benefits eligible employee or retiree.

III. ELIGIBILITY

A. Requirements

Employees: Employees must have been employed by an Alabama Community College System college or entity or the Alabama Community College System office

for the equivalent of one full academic year for faculty or at least 12 months for non-instructional employees, prior to the first scheduled day of class for the term for which the employee is applying.

Dependents: Dependents will be eligible when said employee or retiree is eligible, and to the same degree to which the employee or retiree is eligible, except as herein modified.

Retirees: Only those former employees who have 25 years of continuous service and retire from an ACCS entity or system office or those former employees who have a disability retirement from an ACCS entity or system office are eligible for tuition assistance under this policy.

B. Termination of Eligibility

Employees: Eligibility terminates if the employee discontinues full-time employment or becomes ineligible for benefits at the respective college for any reason except on an approved leave of absence.

Dependents: Dependents will be ineligible when said employee becomes ineligible or eligible retiree becomes ineligible.

Retirees: Eligibility terminates for retirees and their dependents five years after the retiree's effective retirement date on file with the System entity or System office.

IV. AMOUNT OF ASSISTANCE, LIMITATIONS, CONDITIONS, AND AUDITING

A. Tuition Cost

All eligible employees and their dependents will be allowed a waiver of one-third (1/3) of the normally-charged tuition after the first year (equivalent of one full academic year for faculty or 12-month period for non-instructional employees) of employment; a waiver of two-thirds (2/3) tuition after the second year of employment (the equivalent of two full academic years for faculty or at least twenty-four months for non-instructional employees) is allowed for eligible employees and their dependents; and a waiver of full tuition after the third year of employment (the equivalent of three full academic years for faculty or at least thirty-six months for non-instructional employees) is allowed for retirees, eligible employees, and their dependents.

Partial tuition adjustments are to be rounded down to the nearest dollar. Eligible Salary Schedule H employees will be allowed a waiver calculated at a prorated rate

of full-time employment. Expenses for supplies, books, and fees other than tuition will not be waived. Each college will be allowed to count the credit hours generated by these enrollees.

B. Limitation

There is no limitation as to the number of credit hours taken, other than the regular academic limitations that apply at the respective colleges. All students will be required to abide by the academic policies that are in effect at the college they are attending.

C. Conditions

Any eligible student under this policy must maintain at least a “C” average (2.0 on a 4.0 scale) to be eligible for tuition waiver in the courses for which the student receives tuition assistance. Failure of the eligible student to meet this grade requirement causes the student to be ineligible for further tuition assistance until the student (1) brings his cumulative grade point average at the same college in which the tuition assistance was previously provided to a 2.0, or (2) provides satisfactory evidence that the student paid tuition at a college after he/she became ineligible for tuition assistance for the same number of hours in which the student failed to make a 2.0 in tuition assistance classes with evidence that he/she obtained at least a 2.0 in the paid classes. If a student has become ineligible for tuition assistance at one college due to his/her inability to maintain a 2.0 in tuition assistance courses, the student is ineligible to receive tuition assistance at any other college.

D. Auditing

An eligible student will be allowed to audit one course (up to five credit hours) per term at no cost. The eligible student must meet all attendance requirements, class participation, and assignments as required of credit-enrolled students except the final examination is not required. Failure to comply with these requirements will result in the student becoming ineligible for further participation as an audit student in credit hour-producing courses reported for funding purposes. Expenses for supplies, books, and fees will not be waived.

E. Repeating Class

An eligible student may not receive tuition assistance to repeat a course for which tuition assistance was already provided. Tuition assistance, if obtained by an eligible student for a repeated course, must be repaid by the student.

Tuition assistance will be disallowed for repeating a class for which the grade of "W" was originally received.

F. Recertification of Eligibility

The eligible student must re-certify eligibility, as specified in Condition IV.C. above, prior to registering for a new term by completing, submitting, and receiving approval of the “Employee-Dependent Tuition Waiver” form. Providing false information will result in exclusion from all tuition assistance benefits and result in a requirement to repay all tuition assistance benefits and result in a requirement to repay all tuition paid for the student under this program and possible other disciplinary action.

G. Work Week

Participation in this program is **in addition** to the employee's full-time work week, and should not be considered when computing the employee's time for financial compensation. However, in certain cases the employee's work schedule may be adjusted to permit course attendance. Adjustments to an employee's weekly work schedule must be recommended by the employee's supervisor and/or Dean, and approved by the President.

H. Eligible Student Responsibility

It is the responsibility of the eligible student under this benefit program to ensure that all documents and forms required in this process are completed, submitted, and approved by the appropriate personnel in a timely manner. Any information or forms deemed incomplete will cause a delay in the processing of the tuition waiver. It is the eligible student's responsibility to verify with the college of enrollment that all documentation and forms are completed and approved in a timely manner.

Reference Alabama Community College System Policy 612.02: Tuition Assistance.

SECTION 6

GENERAL INFORMATION

POLICY 6.1: TOBACCO FREE CAMPUS

Marion Military Institute (MMI) is committed to providing a safe and healthy environment for its employees, students and visitors. MMI recognizes the right of persons to make their own decisions about their personal use of tobacco products outside of campus. As decades of medical research and study have shown, and the United States Surgeon General has reported, use of tobacco products and exposure to secondhand tobacco smoke are significant health hazards. In the interest of protecting the work and learning environment from the unintended consequences of tobacco use by primary tobacco users, and in an effort to ensure consistency with existing restrictions on tobacco use placed on MMI cadets, and to ensure consistency with the healthy life-style standards implied within MMI's military environment, MMI has established a tobacco-free environment on its campus and in its vehicles.

Consequently, the use, distribution, or sale of tobacco products, including the carrying of any lighted smoking instrument, or e-cigarettes, anywhere on MMI's campus or other MMI premises, indoors or outdoors, or inside MMI-owned, rented or leased vehicles, is prohibited. For the purposes of this policy, a "tobacco product" is defined to include any lighted or unlighted cigarette, cigar, pipe, and any other smoking product, as well as smokeless tobacco in any form.

All college employees, cadets, visitors and contractors are required to comply with this policy, which shall remain in force at all times. Cadets who violate the policy may be subject to disciplinary action as described in the Cadet Manual. Employees who violate the policy may be subject to corrective or disciplinary action in accordance with the Faculty and Staff Handbook and the Student's First Act.

POLICY 6.2: FIREARMS ON CAMPUS

Firearms are prohibited on campus or in any other facility operated by the College. Exceptions to this policy are:

Law enforcement officers legally authorized to carry such weapons who are officially enrolled in classes or are acting in the performance of their duties or an instructional program in which firearms are required equipment.

Reference Alabama Community System Policy 511.01: Firearms on Campus.

POLICY 6.3: VEHICLE REGISTRATION

All faculty and staff members must register their motor vehicles with the Transportation Office. To register a vehicle, the driver must provide a valid driver's license, vehicle registration, and proof of insurance. Upon registration, the driver will be issued a sticker which must be displayed anytime the vehicle is on campus. If the hangtag is lost, the driver must report the loss to the

Transportation Office and purchase a replacement at a cost of \$15.00. There is no charge for the initial registration of a vehicle.

POLICY 6.4: TRAVEL

Marion Military Institute will reimburse employees for expenses incurred during approved travel. Approval for **all** travel should be received **prior** to the trip. Forms for use in requesting travel approval may be secured from the Business Office, found in Appendix G of this Handbook or MMI's website.

In-State

All travel in the State of Alabama is subject to the following rules and regulations:

1. **An In-State travel request form must be pre-approved by the budget manager prior to traveling and be attached to the reimbursement request.**
2. Per diem allowance for in-state travel is used in lieu of subsistence as follows:
 - a. No travel allowance shall be paid for a trip of less than six hours' duration. For travel which does not require an overnight stay, the traveler shall be paid a meal allowance of \$12.75 for a trip of six to twelve hours' duration; and the traveler shall be paid \$34.00 if the trip exceeds 12 hours duration but does not involve an overnight stay.
 - b. For travel requiring an overnight stay, the traveler shall be paid \$85.00 per diem for each day that requires an overnight stay. For travel requiring stays of two or more nights, the traveler will be paid \$100 per day.
 - c. The traveler must enter the hours of departure from base and the hour of return to base on the reimbursement form.
 - d. Employees should use as the base of departure or return, the College campus or their home, whichever is closer to the destination point.
3. Reimbursement at the mileage rate allowed by the Internal Revenue Code for income tax deductions (.56 cents per mile as of Jan 1, 2021) will be made to employees traveling by private car at state expense. The mileage rate is set in accordance with Act 99-362, effective October 1, 1999, which sets the mileage rate at the amount allowed by the Internal Revenue Code for income tax deductions.
4. If there is interruption of travel or deviation from the direct route, due to the travelers' personal convenience, the per diem in lieu of subsistence allowed would not exceed that which would have been incurred on uninterrupted travel by the most economical usually traveled route.
5. Under no circumstances will per diem be allowed to an employee at his/her official

station or base.

6. For employees traveling in a private automobile, current map mileage must be used where mileage is given on the road map. Otherwise, speedometer readings at the beginning and ending of the trip should be recorded. If travel involves more than one city, the route taken must be indicated. For example, Montgomery-Tuscaloosa-Birmingham- Montgomery. All vicinity mileage should be recorded as such and if it exceeds twenty miles on any day, it should indicate major points of travel covered.
7. Where the payment of cash is necessary for miscellaneous expenditures (which should be held to a minimum) on expense accounts, receipts where practicable to obtain them, will be required as follows:
 - a. Hiring taxicabs, automobiles, etc., in excess of \$1 per trip.
 - b. Operating expenses of state-owned automobiles, such as gasoline, oil, etc. Receipts must be itemized less federal tax.
 - c. Repairing or expenses of state-owned automobiles, receipt to be itemized.
 - d. Postage in excess of \$1.
 - e. Shipments, freight, or express or damage.
 - f. Stenographic or typewriting services in excess of \$1.
 - g. Tolls for tunnels and bridges.
 - h. Telegrams, cablegrams (copy of message required in lieu of receipt).
 - i. Local and long-distance telephone messages where the amount involved is in excess of \$1 except those where a pay station is used and is so stated in expense account in which case a receipt will be required.
 - j. Miscellaneous emergency expenditures.
 - k. Railroad and other transportation fares showing tax has been deducted.
 - l. Registration fees.
8. If it is impractical to furnish receipts in any case as required above, the failure to do so must be explained in the expense account.
9. Receipts will not be required for meals and lodging for in-state travel; however, it would be wise to keep lodging receipts in your personal files or, if you desire, they may be attached to your travel claim.
10. Receipts will not be required when the disclosure of the identity of the traveler would be detrimental to the State's interest.
11. Storing privately-owned vehicles is a reimbursable item of expense when the traveler is on official business for the state. Receipts, when practicable to obtain them, are required.
12. All reimbursement requests must be submitted within four weeks of the travel date to be honored. Travel expense statements should be submitted promptly for budgetary reasons.

Out-of-State

Requests for out-of-state travel may be secured from the office of your division. Out-of-state travel is subject to the following rules and regulations:

- 1. An Out of State travel request form must be pre-approved by the President or Chief of Staff prior to traveling and be attached to the reimbursement request.**
2. State-owned automobiles should not be used for an out- of-state trip of 200 miles or more unless two or more people are attending the same meeting.
3. Reimbursement for travel on an authorized out-of-state trip of 200 miles or more, for an employee by private automobile will be the prevailing plane fare rate, tourist's class, and not the federal mileage rate as determined by the Internal Revenue Code (.56 cents per mile as of Jan 1, 2021). The mileage rate is set in accordance with Act 99-362, effective October 1, 1999, which sets the mileage rate at the amount allowed by the Internal Revenue Code for income tax deductions. If an employee desires to use his private automobile on such out-of-state trips and to claim tourist class plane fare, he/she must take annual leave for travel time to and from his destination that is beyond the time that would be required for commercial air travel.
4. Subsistence for out-of-state travel is the amount actually spent. Detailed receipts are required for all expenses to be reimbursed.
5. Persons traveling in the service of the College outside the state of Alabama shall be allowed all their actual necessary expenses, in addition to their actual expenses for transportation, provided such travel has been approved.
6. All out-of-state travel will be of tourist class when commercial transportation is employed.
3. Detailed receipts are required for reimbursement for all expenditures.
4. When completing the travel reimbursement form, attach all receipts in order of meal and date to the form. Meal receipts must reflect the original order. Credit card receipts are not acceptable. Keep copies of records for personal file.
5. Reimbursement requests should be related to the purpose of travel. Items such as valet, room service, in-room movies, or conference specialty items are not allowable charges for reimbursement. Telephone calls from the room are allowable only for work related issues and reimbursement request must be accompanied by the appropriate documentation.
6. Meals over \$50 must be explained in a memorandum of explanation and approved by the budget manager.

All reimbursement requests must be submitted within four weeks of the travel date to be honored.

POLICY 6.5: COMPUTER USE POLICY

Marion Military Institute (MMI) provides computing resources and worldwide network access to members of the MMI community for legitimate academic and administrative pursuits to communicate, access knowledge, and retrieve and disseminate information. All members of the MMI community (faculty, staff, cadets, and authorized guests) share the rights and responsibilities for the use of these privileges. MMI bears the responsibility and has the authority to allocate or otherwise limit access to computer and network resources in order to ensure their most effective and economical use.

For legal purposes, all network usage is monitored and electronically stored. MMI may examine electronic information stored on or passing over college equipment or networks, for the following purposes: 1) to ensure security and operating performance of its computer systems and networks; 2) to enforce MMI's policies or compliance with state or federal law where examination is approved in advance by the Vice President or the President and, either there is reasonable suspicion that a law or MMI policy has been violated or examination is appropriate to investigate the apparent violation, or examination is necessary to comply with state or federal law. Computer users should have no expectation of privacy in material sent, received, or stored on or over MMI computing systems or networks.

Paloalto Firewall and Network Appliance Controls (NAC) are in place to enforce computer policies and maximize bandwidth usage among all users.

Guidelines for Users

1. A user should avoid actions that may make themselves or MMI criminally or civilly liable to others.
2. A user should not do anything that will impair the operation of computers, terminals, peripherals, or networks.
3. A user should avoid any acts or omissions that might subject him/her to criminal penalties or to civil liability. Some acts or omissions that may subject him/her to criminal penalties or civil liability may also subject MMI to criminal penalties or civil liability.
4. A user should be aware that, if any other state or federal law makes the user or MMI criminally or civilly liable for certain conduct, the law still applies even if not specifically described herein.
5. A user should also know that, under law, he/she may be required to reimburse MMI for any amount of money that the College must pay to another because of injury caused by user conduct.
6. A user is not allowed to install switches, hubs, routers, wireless access points, or any other active or passive network device.

Use of Networks

Networks are a form of property controlled by agreements between providers and users. Furthermore, public networks are regulated; therefore, violating a state or federal regulation may bring criminal or civil penalties.

Use of Software

Computer software is a form of intellectual property controlled by licenses that spell out clearly how it may be used and distributed. Everyone must follow all license provisions regulating the use and distribution of computer software. Use or distribution of software in violation of license provisions may subject the violator to criminal and civil penalties, as well as to civil liability to the licensor.

Security

MMI treats electronically stored information, including personal files, as confidential. Use of campus email, the Internet, or networks have been subject to criminal, civil, and/or university sanctions at other institutions, which means that the privilege of confidentiality is not absolute, but may be overridden by court order (Federal Rules of Civil Procedure Rule 16, effective December 1, 2006.) Information critical to the operation of MMI, regardless of its format, is an asset, and measures should be taken to protect this asset from unauthorized modification, destruction, or disclosure, whether accidental or intentional. Under Alabama Code 13A-8-102, it is a crime to attempt or achieve access to, communication of, examination of, or modification of, to destroy, or to disclose, use, or take data, computer programs or supporting documentation. In summary, under law, no one may use, transmit, change, or delete another user's files or software without permission or introduce destructive software, such as programs known as computer viruses, Trojan horses, or worms into any computer, computer system, or network.

When an employee connects to the MMI network and logs into the system with a valid ID and password, the employee indicates that he/she understands and agrees to abide by this policy.

POLICY 6.6: LIBRARY SERVICES

Marion Military Institute's Baer Memorial Library provides quality resources to support the college's curriculum and expert services to support Marion Military Institute cadets, faculty and staff. The library staff is equipped to educate users in areas of researching skills and information retrieval to help them succeed. Community members are also encouraged to take advantage of these resources.

The Baer Memorial Library houses over 30,000 physical resources in the collection including books, serials, periodicals, DVDs and has access to over 50 databases that includes information from thousands of journals and periodicals with full text. The library webpage can be accessed

at <https://sites.google.com/site/baermemorial/>. Databases provided via the Alabama Virtual Library may be accessed at <http://www.avl.lib.al.us/>.

The Baer Memorial Library is open during semesters when classes are in session. Hours of operation are:

Monday – Thursday	7:30am – 9:15pm (0730 – 2115)
Friday	7:30am – 2:00pm (0730 – 1400)
Saturday	Closed
Sunday	6:30pm – 9:15pm (1830 – 2115)

The library is closed for holidays and summer. Hours increase during finals week to accommodate cadets. Changes made to the schedule will be posted on the website.

Additional information about library services and policies can be found at the library website above. You can contact library staff at librarian@marionmilitary.edu and phone 334-683-2371.

The library takes requests for materials from staff, cadets and faculty. Interlibrary Loan services are also available on a limited basis and inquiries should be made to librarian@marionmilitary.edu. There is no specific period in which materials may be requested. Keep in mind that it takes time to acquire, receive and process materials so as much notice as you can give is preferable.

There are several meeting rooms/labs located within the library that are available for faculty and staff use. Because there is a high demand for these rooms, it is preferable that a room be requested as far in advance as possible. Email librarian@marionmilitary.edu or phone ext. 371 to make reservations. A list and description of rooms is available at <https://sites.google.com/site/baermemorial/room-reservations>.

Library instruction within the library and/or the classroom, assistance in developing effective library assignments for students, and prepared research guides are some of the services available for faculty.

POLICY 6.7: RENTAL PROPERTY AND USE OF CAMPUS FACILITIES

A. Residential Rental Property

Residential rental housing is available to full-time MMI employees only. Rental housing allocation gives highest priority to those employed in instruction, student services and senior administrative positions. Housing assignments will be based upon availability, family size, and seniority of position or priority as determined by the President.

Employees should complete a housing request form and submit it to the Comptroller for consideration and approval by the President. Renters are expected to sign and abide by a lease agreement. Renters are responsible for paying a monthly rental rate and all utilities consumed. Rental rates will be based on current local median rates for similarly sized housing.

B. Paul B. Robinson Excess House

The Excess House is available to rent to MMI employees as well as to community members, clubs, and organizations. All events are scheduled on a “first-come first-served” basis with priority given for MMI functions. Those interested in using the facility should contact the Comptroller. Renters will be expected to sign a rental agreement prior to the scheduled event. Renters are responsible for paying a facility fee of \$250.00 per day for use of the property as well as a damage deposit of \$100.00. The damage deposit will be returned to the renter within two weeks after the event if the facility has incurred no damage, and if the Renter has sufficiently cleaned the facility after using it such as to not require cleaning by MMI staff. It is MMI policy to provide use of this facility to MMI employees at a rental rate of ½ of the standard rental rate for non-MMI activities. All other rental requirements still apply.

C. Johnson Hall Guest Suites

The guest suites at Johnson Hall are reserved for guest speakers, designated special guests and honored alumni. All guests will be approved by the President prior to their being offered use of a guest suite. Generally, these guests will not be charged for use of the guest suite. Faculty/staff may recommend/request other special guests for a guest suite through their supervisor, and shall make no promises of guest suite availability until approval has been given. If approved, faculty/staff shall make all arrangements for potential guests with the Comptroller. The standard rental rate in these instances is \$64.00 per night.

POLICY 6.8: PURCHASING

The purchasing function supports the mission, goals, and objectives of the College. It provides service to students, faculty, and the staff. Purchasing of goods and services, repairs, leases, lease purchases and contractual services for the College are centralized under the Comptroller. Purchasing shall be in compliance with the "BID LAW," Alabama Code 1975, Section 41; Chapter 16; Article 3, Public Law 95-507 that allows participation by small businesses; and Executive Orders 11246 and 12138 concerning equal employment opportunity and affirmative action. Purchase requirements related to federal grants and contracts will comply with OMB Circular A 133. Senior staff must prepare a list of supplies, contractual services, and equipment for the coming fiscal year and submit it with their annual budget request. Bid specifications for

like items will be prepared and quantity purchases will be made. Bid specifications for purchases will be prepared in cooperation with the department making the request. The purchasing procedure includes the use of a Requisition for Purchase Order, Purchase Order, audit of invoices, and approval for payment before issuing disbursements.

Requisition for Purchase Order

A Requisition for Purchase Order is required for all purchases of supplies, equipment, repairs, leases and contractual services. The requisition form is prepared on-line and follows the designated approval queue. Emails are sent to all individuals involved in the approval process. Faculty and staff requesting materials will complete a Requisition for Purchase Order. The items to be purchased must be listed separately with the description clearly stated. General descriptions such as "electrical supplies or office supplies" are not acceptable. The unit price for each item should be listed and extended to the total column. The total of all items must be placed at the bottom of the page. Faculty requisitions must be submitted to the division chairperson; staff requisitions must be submitted to the appropriate budget manager, e.g., Chief Instructional Officer, Athletic Director, VP for Student Affairs and Commandant of Cadets. Unapproved requisitions will be returned to the employee completing the request. The budget manager is responsible for reviewing the requisition for available budget, and its relative use in the department. After the budget manager's approval, the requisition must be forwarded to the Comptroller for review. The Business Office reviews the requisition for legal issues, budget compliance, and bid requirements. If requirements have been met, the Comptroller approves the requisition and forwards it to the appropriate office to proceed with the purchase. Purchases that are made prior to obtaining the proper approval will be charged to the individual making the unauthorized purchase. Non-payment of these items by the individual could result in job suspension or termination as determined by the President.

Check Requests

Check requests are not exempt from the purchase requisition process. All check requests must follow the procedures above for a purchase requisition. All check requests require the completion of a Check Request Form that must be approved by the budget manager. The budget manager's signature indicates that the appropriate budget has been reviewed and that funds are available to support the purchase. A signed receipt or invoice for the expenditure must accompany the Check Request Form.

Petty Cash

The use of petty cash in excess of \$50 is unauthorized. All purchases in excess of this amount must be processed through a requisition for purchase order. All reimbursements for petty cash require the completion of a Petty Cash Form that must be approved by the budget manager. The budget manager's signature indicates that the appropriate budget has been reviewed and that

funds are available to support the purchase. A signed receipt or invoice for the expenditure must accompany the Petty Cash Form.

POLICY 6.9: FUNDRAISING

The MMI President is responsible for all fundraising and gift solicitation activities at MMI. The Office of Institutional Advancement is the designated staff section responsible for coordinating all fundraising activities as directed and approved by the President.

All fundraising activities, proposed or approved, must be coordinated with the Vice President for Institutional Advancement. The Office of Institutional Advancement is also responsible for providing advice to the President on all fundraising activities and support as may be required for those activities once approved. This office also has responsibility for overseeing the development process, including the identification, cultivation, and solicitation of sources of philanthropic support for MMI and the valuation, recording and acknowledgement of gifts received by the Institute or any of its offices.

Prior to the initiation of a formal request for solicitation approval, the Office of Institutional Advancement is available to consult with those who wish to approach potential funding sources. This office, in coordination with the President, will assess the appropriateness and timing of such a solicitation in light of institutional priorities and any known financial commitments by those considered to be potential donors.

Once a formal solicitation request has been approved by the President, the Office of Institutional Advancement will work with the office, or individual faculty or staff member to identify and evaluate prospects, to suggest solicitation approaches, and to assist, as appropriate, in the solicitation process.

It is understood that individuals, corporations, foundations, or other entities may initiate contact with MMI faculty and staff regarding funding opportunities. While individual staff and faculty members are encouraged to answer questions and to discuss gift opportunities with potential donors, those inquiries *must be reported promptly* to the Vice President for Institutional Advancement. That information is critical to the overall coordination of fundraising and development activities.

POLICY 6.10: COURSE SYLLABI

New faculty members will consult their Department Chairs for copies of course syllabi. Faculty members are required to disseminate state-approved course syllabi to each student in each course at the beginning of the semester. This syllabus must include all the details necessary for each student to know the full range of requirements in a class, including the grading system used by the instructor.

Each syllabus must also provide students with a daily/weekly schedule of course work. A daily/weekly schedule must include an outline that states the topics and related activities to be included in each class session and must follow the formatting and contain all the elements of the MMI Syllabus Model, a copy of which can be found on the electronic Academic Affairs folder on all MMI instructors' computers. Each semester a complete copy of each course syllabus must be filed with the Department Chair and in the Academic Affairs folder by a deadline designated by the Chief Instructional Officer.

POLICY 6.11: TEXTBOOKS

All textbooks and supplemental materials required of students will be sold through the Marion Military Institute Bookstore. Under no circumstances are instructors to sell or take orders personally for such items. Instructors must use only those textbooks/materials approved for the course taught. Textbooks/materials provided by the instructor's department chairs remain the property of the department.

1. Each department will review and recommend textbooks/materials through appropriate administrative/instructional processes.
2. The textbooks/materials to be considered must meet the course description in the catalog.
3. A primary consideration when recommending texts shall be the cost to the student of the books/materials.
4. If the textbooks/materials will lead to personal profit for the author who is a member of the department seeking to adopt the textbooks/materials, the author shall not be permitted to participate in the approval of this text.
5. After meeting with relevant faculty members, the Department Chairs will be responsible for informing the bookstore, in a timely fashion, of all approved choices for textbooks/materials.
6. The use of any supplementary textbooks/materials which the instructor requires the student to purchase must be approved by the Department Chair.
7. New editions of textbooks should be adopted for the first term that the textbook is reasonably available.

POLICY 6.12: FACULTY GRADE REPORTING

All faculty must adhere to the published process and deadline for reporting of mid-term and final grades. Graduating student final grades will be due ahead of other student grades at the end of each semester. Final declaration of meeting graduation requirements and grade processing cannot be completed until all grades are recorded.

POLICY 6.13: WITHDRAWAL POLICY

After the Drop/Add period (the first week of class) and through the date specified on the academic calendar, a cadet may withdraw from individual courses. While enrolled, however, a cadet must at all times maintain a full class load (12 credit hours). Audited courses and courses from which a student withdraws are subject to the same fees as regular courses. Cadets may withdraw from the all classes through the last day of class, as published in the academic calendar. At the point of withdrawal, the cadet will receive a grade of W for the individual course or all courses, as appropriate.

Pell Grant recipients who completely withdraw before completing 60% or more of the term will be subject to the return of Title IV funds based on federally approved calculation. Students receiving any type of financial assistance should be encouraged to speak with financial assistance personnel before withdrawing.

POLICY 6.14: FINAL EXAMINATIONS

Final examinations must be given according to the examination schedule. Any exceptions to this policy must be approved by the Academic Dean. Any change in the student's individual final exam schedule will be approved only in the event of severely extenuating circumstances.

POLICY 6.15: CLASS ATTENDANCE POLICY

Cadets are expected to attend every class meeting. Attendance is considered a contract with obligated appointments and specific expectations of attendance. In the event that a cadet must miss class due to a school-sponsored activity, the cadet is advised to meet with the instructor prior to the absence to arrange completion of missed work. Regardless, the cadet is responsible for all work as noted on the course syllabus. Cadets who are authorized for bed rest are, like those on school-sponsored activities, still responsible for making up work and for adhering to the assignments per the course syllabus.

If a cadet reaches the point of having 4 or more unexcused absences in a course, the cadet is subject to being administratively withdrawn from the course and receiving a grade of "F" for the course. Nonattendance does not constitute a withdrawal from class or from the College. Marion Military Institute has procedures in place that must be followed in the event that a student must leave the College during the semester. Ceasing to attend and not following these procedures will result in a grade of "F" for each of the cadet's courses.

POLICY 6.16: GRADING SYSTEM, GRADE CHANGES, AND APPEAL OF COURSE GRADE GRADING SYSTEM

A grade is awarded in each credit course. The grade is based on the student's demonstrated proficiency as determined by the faculty member teaching the course. The following grading system is in place at Marion Military Institute.

<u>Grade</u>	<u>Description</u>	<u>Quality Points</u>
A	Excellent	4
B	Good	3
C	Average	2
D	Poor	1
F	Failure	0

Other marks which may appear on the grade report or transcript are as follows.

I – Incomplete. An incomplete grade is used only for students who cannot complete coursework because of extreme hardship and extenuating circumstances. The incomplete grade, before being assigned, must be approved by the Chief Instructional Officer. The work that must be made up in order for the incomplete to be converted to a regular grade must be completed, and the new grade assigned, no later than the end of the following semester, excluding summer. Failing to meet this deadline will result in the assigning of the grade of “F”.

The incomplete grade indicates that the student was passing the course at the end of the semester but was unable to complete the course due to extenuating circumstances. The assignment of the “I” grade may be awarded after consultation between the student and the instructor, and after the instructor's consultation with the Department Chair and the Chief Instructional Officer. If it is determined that an incomplete should be assigned, the instructor will complete the Incomplete Grade Form (Appendix H). Along with approving signatures, the form must include a description of the work to be completed and the date for completion. The date for completion may not exceed the published last day of class for the following semester, excluding summer. A course with a grade of “I” will not count as enrolled hours in the subsequent term.

AU – Audit. An audit indicates that the student is enrolled in the course, but will not be receiving a grade or credit for the course. An audit must be declared by the end of the add/drop period (first five days of class) and may not be changed thereafter. Credit hours for an audit will not be averaged into the grade point average.

W – Withdrawal. The grade of “W” indicates an official withdrawal from an individual course within the designated time period or complete withdrawal from the College before the close of business on the last day of class for the semester.

Grade Changes

If an error has been made in entering a midterm or final grade, an instructor must alert the Registrar immediately and complete a Grade Change Form. This form can be found in the Registrar’s office and needs to be signed by the Chief Instructional Officer. This process must be completed within two weeks of the deadline of submission of either midterm or final grades.

Final Grade Appeal Procedure

When a cadet believes there are circumstances that warrant the appeal of the final grade received in a course, the student may appeal the grade. The appeal process must begin within 15 calendar days of the beginning of the subsequent semester.

Grounds for Appeal

- Errors of omission. The cadet contends that a certain test, homework, or class project was submitted at the designated time but not graded.
- Errors in averaging. The cadet contends that an error occurred in the mathematical calculations of graded material.
- Errors in course practices. The cadet contends that there was significant disparity between the course syllabus and the manner in which the course was conducted.

Procedures for Appeal

1. The cadet must consult with the instructor of the class to ensure that no calculation or administrative error has occurred.
2. If no satisfactory agreement is reached with the instructor, the cadet may submit a written appeal to the appropriate Department Chairperson. The Chairperson will investigate the appeal, render a decision, and submit a written report of the findings to the student, instructor, and the Chief Instructional Officer.
3. If the appeal is denied by the Department Chairperson, the cadet may forward the written appeal to the Chief Instructional Officer. The Chief Instructional Officer will review the appeal, render a decision, and submit a written report of the findings to the Cadet.
4. If the cadet is not in agreement with the decision of the Chief Instructional Officer, he or she may request a hearing before an Appeals Committee. The committee members will review the appeal to ensure that it meets one of the three allowable grounds for appeal

and explains how it meets the grounds for appeal. If the committee determines that the appeal has merit for further investigation, a hearing will be scheduled.

5. The Appeals Committee will forward a recommendation to the Chief Instructional Officer, who will review the subcommittee's recommendation.
6. The Chief Instructional Officer will issue a written opinion relative to the subcommittee's report and forward the opinion to the President.
7. The President's decision will be final.

POLICY 6.17: INDEPENDENT STUDY

Independent study courses are offered when a documented need exists for students to meet their program requirements. Instructors must complete an Independent Study Request form (Appendix I) documenting how students will receive the required hours of instruction and attach a current course syllabus. The request form must be signed by the appropriate Department Chair and the Chief Instructional Officer.

POLICY 6.18: CURRICULUM CHANGES

Should a change in curriculum be recommended, the procedure for submitting a Curriculum Revision Proposal is as follows:

1. Based on curricular need, relevance to the College's mission, or both, a new program or course is proposed by a faculty member to his/her department chair.
2. If the department chair approves the proposal based on the criteria in (1), he/she will propose the new program or course to the Chief Instructional Officer (Academic Dean).
3. The Chief Instructional Officer reviews the proposal and, if approved based on the criteria in (1), asks the appropriate department chair to complete a Curriculum Revision Proposal form for review by the Chief Academic Officer, who, using the same criteria, can then recommend inclusion on the agenda of a subsequent Academic Council meeting.
4. If approved by the Council using the criteria in (1), the Chief Instructional Officer will submit the proposed change to the appropriate outside agencies. For new courses, the proposed change is sent to the Alabama Community College Systems Board of Trustees for inclusion in the Course Directory (Alabama Community College System Board of Trustees Policy 717.01) and to the AGSC/STARS Committee for review and approval for inclusion in the state transfer system. For new programs, the College must submit the program to the Alabama Community College System Board of Trustees for approval, per the process described in Alabama Community College System Board of Trustees Policy 702.01, Requests for New Instructional Programs, and Alabama Community College System Board of Trustees Policy Guidelines 702.01. Any request for a new program will also be forwarded to the Alabama Commission on Higher Education (ACHE) for

approval by that body, as well as the Alabama Community College System Board of Trustees.

5. When approved, the College may then include the new course in the curriculum and the new program as part of the College's academic program offerings.

POLICY 6.19: MAINTENANCE REQUESTS

Faculty requests for repairs should be submitted to the Chief Instructional Officer who will forward to the Department of Buildings and Grounds.

Departmental maintenance requests should be submitted through email to maintenance@marionmilitary.edu.

POLICY 6.20: EMERGENCY CLASS DISMISSAL

When, in the opinion of the President or the person designated as acting in the absence of the President, inclement weather or other emergency situations create a hazard for faculty and students, the President or his/her designee will deem that the College will be closed. Announcements of the closing will be placed on the website, and supervisors will be notified.

POLICY 6.21: ACADEMIC INTEGRITY

Because academic integrity is a cornerstone of MMI's commitment to the principles of leadership and character development, faculty members are responsible for ensuring that cadets uphold professional standards of research, writing, assessment, and ethics in their areas of study.

Academic misconduct can generally be defined as all acts of dishonesty in an academic or related matter. Academic misconduct includes, but is not limited to, the following categories of behavior:

- a. Cheating: use or attempted use of unauthorized materials, information, study aids, the answers of others, or computer related information.
- b. Plagiarism: claiming as one's own the ideas, words, data, computer programs, creative compositions, artwork, etc., done by someone else. Examples include improper citation of referenced works, use of commercially available scholarly papers, failure to cite sources, or copying another's ideas.
- c. Fabrication: presenting as genuine falsified data, citations, or quotations.
- d. Abetting: helping another student commit an act of academic dishonesty. Allowing a fellow student to copy quiz/examination answers or use one's work as his/her own are examples of abetting.
- e. Misrepresentation: falsification, alteration, or misstatement of the contents of documents, academic works, or other materials related to academic matters, including works substantially done for one class as work done for another without receiving prior approval from the instructor.

In the event of suspected academic misconduct, the following procedure will be followed:

A student may appeal an instructor's decision in a written request to his/her department chair, who will then ask the Chief Instructional Officer to assemble the Appeals Committee, a standing committee composed of MMI faculty and staff. If the student's instructor, who has initiated the case, is a member of the committee, the Dean will ask another faculty member to serve in the instructor's place for that particular appeal. The student may be accompanied at the meeting by his/her faculty advisor or TAC officer or a faculty member of his or her choice. The decision of the Appeals Committee is final.

The process described above addresses the academic consequences of academic dishonesty. When necessary, these cases will be reported to the MMI Honor Council, who may choose to review the incident further as an honor offense.

The following is a list of penalties that may be imposed upon any student found guilty of academic misconduct:

1. Requirement to submit additional work or take additional examinations.
2. A lower or failing grade on the assignment or examination.
3. A lower or failing grade in the course.
4. Removal from class.

For more detailed definitions of the various kinds of academic misconduct, please see the Academic Catalog.

APPENDICES

APPENDIX A:

FAMILY RELATIONSHIP DISCLOSURE FORM

Employee's Name: _____

Job Title/Position: _____

Employment Date: _____ Full-Time _____ Part-Time _____

Salary Schedule _____ Rank _____ Step _____ Annual Salary _____

For purposes of this disclosure, relative includes the following: spouse, dependent, adult child and his or her spouse, parent, spouse's parents, sibling and his or her spouse.

Are you a relative of any employee of the Alabama College System or any member of the State Board of Education?

Yes _____ No _____

If yes, list the name(s), relationship, and employer/position of relative(s)

I affirm that all information contained herein is correct to the best of my knowledge.

Signed: _____
Employee Date

APPENDIX B:
**EMPLOYEE ADDRESS CHANGE/CHANGE OF
STATUS FORM**

**EMPLOYEE ADDRESS CHANGE/CHANGE OF
STATUS FORM**

**Please print and return completed form to the Human
Resources Department.**

Name Change

Employee Name (Last, First, MI)

New Name (if applicable) (Last, First, MI)

*Name will not be changed on the payroll system unless a new **Social Security Card** reflecting the new name is attached.

ADDRESS CHANGE

New address (if applicable)

City, State, & Zip

Telephone

Employee Signature

Date

APPENDIX C:

REQUEST FOR APPROVAL OF OUTSIDE EMPLOYMENT

REQUEST FOR APPROVAL OF OUTSIDE EMPLOYMENT

In accordance with Alabama Community College System Board of Trustees and Marion Military Institute policies, faculty and staff members proposing to engage in outside employment activities must submit the following information for approval by the President prior to engaging in the proposed activity.

Name: _____

Department: _____ Job Title: _____

1. Name of proposed employer or activity: _____
2. Location of proposed employment or activity: _____
3. Anticipated dates and length of outside employment: _____
4. Days worked per week _____; Hours worked per day _____; specify days and hours _____
5. Description of outside employment activity: _____

I hereby certify that the outside employment activity reported does not constitute a conflict of interest and will not interfere with my regular employment at Marion Military Institute.

Employee's Signature

Date

All reported outside employment activity must be reviewed by the appropriate chair or supervisor and Dean or Director to determine conformance of the proposed activity with the guidelines stated in the policy on outside employment. After completing the review, the chair/supervisor and dean/director should indicate their approval or disapproval below and indicate whether a conference with the faculty or staff member is recommended, and if so, when it is held.

___ Approved ___ Disapproved

Supervisor

Date

___ Approved ___ Disapproved

Senior Staff

Date

___ Approved ___ Disapproved

President

Date

APPENDIX D:

ANNUAL PERFORMANCE REVIEW FORM

Annual Performance Review

Employee's Name	Employee Title	Supervisory Responsibilities Select Answer	Department Select Answer
Supervisor's Name	Supervisor's Title		Department Select Answer
Review Period	Type of Evaluation Select Answer		

Please select the answer from the drop down list that most accurately reflects the employee's performance for the respective category. Ratings should be based solely on the employee's performance during the preceding twelve months. Selecting "Needs Improvement" requires an explanation and/or guidance for the employee.

Answer Choices: Exceeds Requirements; Meets Requirements; Needs Improvement; Unsatisfactorily; Not Applicable; Not Observed

Part One: Job Requirements

A. Understanding of the Job: Does the employee have adequate knowledge and skills to complete the variety of tasks required by the job?	Select Answer	
B. Quality of Work: Is the quality of work acceptable and does it meet established standards?	Select Answer	
C. Productivity: Does the employee complete assignments on schedule, use resources wisely and manage time effectively?	Select Answer	
D. Reliability and Dependability: Does the employee follow through on assigned tasks to completion as expected? Is the employee reliable?	Select Answer	
E. Work Habits: Does the employee meet attendance requirements? Is the employee punctual, available, and accessible?	Select Answer	
F. Initiative: Does the employee demonstrate initiative and resourcefulness by taking appropriate action with minimum direction as situations arise?	Select Answer	
G. Safety: Does the employee follow safety rules, report unsafe working conditions/practices, and proactively prevent unsafe practices in the workplace?	Select Answer	
H. Planning and Organizing: Does the employee set individual objectives and goals and establish appropriate priorities?	Select Answer	
I. Problem Solving: Does the employee identify and evaluate alternative solutions and make appropriate decisions?	Select Answer	
J. Efficiency: Does the employee manage the resources entrusted to him or her with efficiency?	Select Answer	
K. Customer Service: Does the employee demonstrate a desire to serve and show a willingness to provide excellent service to students, faculty, staff, co-workers, and/or the public?	Select Answer	
L. Ethical Conduct: Does the employee exhibit honesty, integrity, and high ethical standards while performing their job duties? Does the employee adhere to college policies, procedures and practices?	Select Answer	

M. Commitment to Performance Excellence: Does the employee actively seek opportunities to learn new skills and make suggestions for improving work processes?	Select Answer	
--	---------------	--

Professional Development:

Has the employee completed annual requirements such as sexual harassment training?	Select Answer	
--	---------------	--

Part Two: Performance Excellence Behaviors

A. Communication: Does the employee provide accurate and clear written and verbal information: present information effectively; listen effectively; comprehend and follow directions; ask timely and appropriate questions?	Select Answer	
B. Cooperation/Teamwork: Does the employee work effectively with others to accomplish common goals and objectives and use formal and informal methods to improve the productivity of the group?	Select Answer	
C. Conflict Resolution: Does the employee take initiative to address situations involving conflict? Does the employee resolve differences with little disruption to the work environment?	Select Answer	
D. Constructive Feedback: Does the employee accept constructive feedback and demonstrate willingness to improve?	Select Answer	
E. Accountability: Does the employee take ownership of responsibilities? Is the employee accountable for projects and job duties?	Select Answer	
F. Continuous Improvement: Does the employee actively seek opportunities for personal improvement and readily adapt to change?	Select Answer	
G. Attitude: Does the employee strive to cultivate and maintain positive working relationships and demonstrate an attitude of respect toward coworkers?	Select Answer	

Part Three: Supervisory Factors: (This section should only be completed for individuals with supervisory responsibilities)

A. Leadership: Consider how well the supervisor demonstrates effective supervisory abilities, sets goals and priorities, gains respect and cooperation, inspires and motivates subordinates, models good work habits and behaviors, directs the work group toward common goals, promotes cooperation between departments, and supports administrative decisions.	Select Answer	
B. Delegation/Coordination: Consider how well the supervisor demonstrates the ability to direct others in accomplishing work, effectively selects and motivates staff, gives clear instructions, defines work assignments, appropriately distributes workload, oversees the work of subordinates, and coordinates with subordinates and other staff.	Select Answer	
C. Planning and Organizing: Consider how well the supervisor plans and organizes work for self and others; coordinates with others, establishes appropriate priorities, anticipates future needs, allocates time and resources and carries out assignments effectively.	Select Answer	
D. Quality Management: Consider how well the supervisor performs day-to-day administrative tasks, uses quality management tools and techniques when appropriate, achieves desired results, manages time, effectively administers policies and implements procedures, maintains appropriate contact with supervisor and other relevant parties, and effectively and efficiently utilizes time, funds, staff, and/or equipment.	Select Answer	
E. Supervision of Staff: Consider how well the supervisor serves as role model, provides guidance and opportunities to their staff for their development and advancement, encourages teamwork and team participation, resolves work-related employee problems, assists subordinates in accomplishing their work related objectives,	Select Answer	

communicates in a clear, concise, accurate, and timely manner with subordinates, and makes useful suggestions.	
--	--

Part Four: Overall Performance

Employee strengths: What does the employee do well?

- 1.
- 2.
- 3.

List specific areas for improvement: What does the employee need to work on?

- 1.
- 2.
- 3.

Part Five: Overall Performance Rating and Comments (use additional pages if necessary)

Please use this space to support the overall rating. The overall rating should take into consideration job requirements, performance excellence behaviors and supervisory factors, if applicable. "Unsatisfactory" ratings should be addressed in this section.

Part Six: Employee Comments and Acknowledgement

Employee Comments: (use additional pages if necessary)

- () I have reviewed my job description and understand the principal accountabilities of my position.
- () I have read the evaluation and have discussed its contents with my supervisor. I understand that if I do not agree with the rating I should state my concern(s) in the comments section above. My signature does not indicate my agreement or disagreement with this performance review.

Employee Signature: _____ Date: _____

Supervisor Signature: _____ Date: _____

President's Signature: _____ Date: _____

APPENDIX E:

FAMILY AND MEDICAL LEAVE ACT (FMLA)

EMPLOYEE RIGHTS AND RESPONSIBILITIES

Family and Medical Leave Act (FMLA) Employee Eligibility, Rights & Responsibilities

- A. Eligibility. To be eligible for FMLA benefits, an employee must have been employed by the College for a total of 12 months from the date on which any FMLA leave is to begin and must have worked at least 1,250 hours over the previous 12-month period. These guidelines generally do not cover temporary employees. However, if a temporary employee is extended beyond one (1) year, the employee would be covered if the employee had worked at least 1,250 hours during the previous 12-month period.
- B. Definitions.
1. Parent. A biological or adoptive parent or an individual who stood *in loco parentis* (a person who is in the position or place of a parent) to an employee when the employee was a child.
 2. Child. A son or daughter under eighteen (18) years of age or eighteen (18) years of age or older and incapable of self-care because of mental or physical disability who is: a biological child; an adopted child; a foster child (one for whom the employee performs the duties of a parent as if it were the employee's child); a stepchild (a child of the employee's current spouse from a former marriage); a legal ward (a minor child placed by the court under the care of a guardian); a child of an employee standing *in loco parentis*.
 3. Spouse. A husband or wife.
 4. Serious Health Condition. An illness, injury, impairment, or physical or mental condition that involves either any period of incapacity or treatment connected with inpatient care (an overnight stay) in a hospital, hospice, or residential medical-care facility, and any period of incapacity or subsequent treatment in connection with such inpatient care; or continuing treatment by a health care provider which includes any period of incapacity (inability to work, attend school, or perform other regular daily activities) due to:
 - a. a health condition lasting more than three consecutive days, and any subsequent treatment or period of incapacity relating to the same condition that also includes treatment two or more times by or under the supervision of a health care provider; or one treatment by a health care provider with a continuing regimen or treatment; or
 - b. pregnancy or prenatal care; or

- c. a chronic serious health condition which continues over an extended period of time, requires periodic visits to a health care provider, and may involve occasional episodes of incapacity; or
 - d. a permanent or long-term condition for which treatment may not be effective; or
 - e. any absences to receive multiple treatments for restorative surgery or for a condition which would likely result in a period of incapacity of more than three days if not treated.
 - 5. Health Care Provider. Doctors of medicine or osteopathy authorized to practice medicine or surgery by the state in which the doctors practice; or podiatrists, dentists, clinical psychologists, optometrists, and chiropractors authorized to practice, and performing within the scope of their practice under state law; or nurse practitioners, nurse-midwives, and clinical social workers authorized to practice, and performing within the scope of their practice as defined under state law; or Christian Science practitioners listed with the First Church of Christ, Scientist in Boston, Massachusetts; or any health care provider recognized by the College or the College's group health plan benefits manager.
 - 6. Workweek. The number of hours an employee is generally scheduled to work each week.
- C. Leave Entitlement. The College will grant an eligible employee up to a total of 12 workweeks of unpaid leave during any 12-month period for one or more of the following reasons:
- 1. For the birth and care of the newborn child of the employee, provided the leave is taken within twelve (12) months following birth;
 - 2. For placement with the employee of a son or daughter for adoption or foster care, provided the leave is taken within twelve (12) months following placement;
 - 3. To care for an immediate family member (spouse, child, or parent) with a serious health condition;
 - 4. To take medical leave when the employee is unable to work because of a serious health condition.
- D. The College will grant an eligible employee up to a total of 26 weeks of unpaid leave during any 12 month period to care for a covered service member with a serious injury or illness if the eligible employee is the service member's spouse, son, daughter, parent, or next of kin (military caregiver leave).
- E. Health Benefits. The College will maintain group health insurance coverage for an employee on FMLA leave whenever such insurance was provided before the leave was taken and on the same terms as if the employee had continued to work. The employee

taking FMLA leave is responsible for making all monthly health insurance premium payments in order to maintain health insurance coverage and benefits. Arrangements and payments for the coverage must be made through the MMI Business Office. Failure to make such payments on a timely basis will result in the lapse of health insurance coverage and benefits.

F. Notice and Certification. Employees seeking to use FMLA leave are required to provide notice thirty (30) days in advance of the need to take FMLA leave when the need is foreseeable and such notice is practicable. The College may require the following:

1. Medical certification supporting the need for leave due to a serious health condition affecting the employee or an immediate family member;
2. Periodic reports during FMLA leave regarding the employee's status and intent to return to work.

When intermittent leave is needed to care for an immediate family member or for the employee's own illness, and is for planned medical treatment, an employee must try to schedule treatment so as not to disrupt unduly operation of the College.

Reference Alabama Community College System Board of Trustees Policy Guideline 611.01:
Leaves Without Pay

APPENDIX F:
TUITION WAIVER FORM

EMPLOYEE AND/OR DEPENDENT TUITION WAIVER FORM

Employee's Name _____ (please print) Employee ID # & Position/Title _____

Phone # _____ Email _____

Dependent's Name _____ Dependent's Student ID or SS# _____

Phone # _____ Email _____

Relationship to Employee: (check one)

☐ Self ☐ Spouse ☐ Unmarried Natural or Adopted Child ☐ Unmarried Step-Child ☐ Legal Ward

Does the Dependent live with you? ☐ Yes ☐ No With former Spouse? ☐ Yes ☐ No Temporary Housing? ☐ Yes ☐ No

(The unmarried child(ren) must reside in the household of the employee or retiree. The unmarried child(ren) must reside in the household of the employee's or retiree's former spouse. The unmarried child(ren) must reside in temporary housing while enrolled in college such as college dormitories, apartments, and student housing. The unmarried stepchild(ren) must reside in the household of the employee or retiree. Dependent refers to spouse, unmarried child(ren) or a legal ward (minor child placed by court) when the guardian is a benefits eligible employee or retiree.)

Institution to Attend _____ Term/Year _____

Course # _____	Course Name _____	Credit Hours _____	Online: <input type="checkbox"/> Yes <input type="checkbox"/> No	Audit: <input type="checkbox"/> Yes <input type="checkbox"/> No
Course # _____	Course Name _____	Credit Hours _____	Online: <input type="checkbox"/> Yes <input type="checkbox"/> No	Audit: <input type="checkbox"/> Yes <input type="checkbox"/> No
Course # _____	Course Name _____	Credit Hours _____	Online: <input type="checkbox"/> Yes <input type="checkbox"/> No	Audit: <input type="checkbox"/> Yes <input type="checkbox"/> No
Course # _____	Course Name _____	Credit Hours _____	Online: <input type="checkbox"/> Yes <input type="checkbox"/> No	Audit: <input type="checkbox"/> Yes <input type="checkbox"/> No
Course # _____	Course Name _____	Credit Hours _____	Online: <input type="checkbox"/> Yes <input type="checkbox"/> No	Audit: <input type="checkbox"/> Yes <input type="checkbox"/> No

I certify that I am familiar with the provisions of the Employee and/or Dependent Tuition Waiver policy and that the person(s) requesting the tuition waiver benefits qualifies as an eligible employee or dependent in accordance with the policy. (See reverse of form for policy and/or processing steps).

**INITIAL BY EACH ITEM
AND SIGN BELOW**

_____ All fees (other than portion of tuition waiver), books and supplies are the responsibility of the student
 _____ Maximum of one audit per term
 _____ Waiver does not apply to repeated courses
 _____ Student must abide by the academic limitations and policies of the attending institution (including any course limitations)
 _____ Unofficial Transcripts (and current course schedule) must be attached to this form

It is the responsibility of the employee and/or dependent to ensure that all documents and forms (requested by the college where the student is enrolled) are submitted and signed by the appropriate personnel in a timely manner prior to submission. Any packets deemed as incomplete will cause a delay in the processing of the tuition waiver. Please be sure to check with the college in which you are registered for courses to ensure the packet is complete.

Employee Signature _____ Date _____

Supervisor (if required) _____ Date _____

This section to be completed by the Human Resources department at the institution of employment.

Certification: Full Waiver ☐ 2/3 Waiver ☐ 1/3 Waiver ☐ Full-time Employment Date _____ Date of Employee Retirement _____
 *Dependents are eligible for waiver for a maximum of 5 years from date of employee retirement.
 Certifier Name: _____ Title: _____ Date: _____
 Employee's Institution: _____

This section to be completed by the appropriate college official at the institution of attendance.

Certification: Student's GPA is at least 2.0? Yes ☐ No ☐
 Certifier Name: _____ Title: _____ Dept/Division: _____ Date: _____

This section to be completed by the President at the institution of attendance.

Based on the certified information above, I hereby certify that _____ has been approved to receive all benefits granted under the Employee and Dependent Tuition Waiver Program for _____ hours at the institution of _____
 President: _____ Date: _____

Notes:

Revised May 2020

APPENDIX G:

TRAVEL FORMS



MARION MILITARY INSTITUTE

IN STATE TRAVEL REQUEST

NAME: _____ Date: _____

I request permission to be away from the campus on _____
to travel to _____
for the purpose of _____

I plan to travel by: _____ State car
_____ Private automobile
_____ Other _____ Explain

I have made the following arrangements for the teaching of my classes in my absence (Type N/A if this does not apply to you).

This trip will be charged to the _____ budget.

The estimated cost is: \$ _____.

Person making request Date

Department Head, if applicable Date

Approved by: _____
Budget Manger Date

STATEMENT OF OFFICIAL IN-STATE TRAVEL

Department _____	Traveler Name and Address
Pay from _____ Funds	Name _____
Was a meal provided to you by the meeting or conference attended? _____	Address _____
APPROVED _____	City, State, Zip _____
Budget Manager (Supervisor if traveler is Budget Manager)	

Month And Date	POINTS OF TRAVEL		Private Car Miles	Hour of Departure From Base		Hour of Return to Base		Overnight Per Diem	Partial Day Per Diem \$12.75/\$34.00
	From City/County	To City/County		AM	PM	AM	PM		
Total Number of Miles Traveled			0	TOTAL PER DIEM CLAIMED				0.00	
Detail miscellaneous expense below and furnish receipts.				MILEAGE (# of miles x mileage rate of .56)					
				MISCELLANEOUS EXPENSE					
				TOTAL THIS EXPENSE ACCOUNT					

I HEREBY CERTIFY that the travel and expense indicated hereon was accomplished in the performance of official duties pursuant to travel authority granted me.

Signature of Traveler _____

Overnight Per Diem:

\$85 per diem is paid for each day of travel when overnight stay is required

\$100 per diem is paid for each day requiring stays of two or more nights

Partial Day per Diem:

\$12.75 per diem is paid for travel of six to twelve hours.

\$34.00 per diem is paid for travel in excess of twelve hours but not an overnight stay.



MARION MILITARY INSTITUTE

OUT OF STATE TRAVEL REQUEST

NAME: _____ Date: _____

I request permission to be away from the campus on _____
to travel to _____
for the purpose of _____

I plan to travel by: _____ State car
_____ Plane
_____ Private automobile
_____ Other _____ Explain

I have made the following arrangements for the teaching of my classes in my absence (Type N/A if this does not apply to you).

This trip will be charged to the _____ budget.

The estimated cost is: \$ _____.

Person making request Date

Department Head, if applicable Date

Approved by: _____
President Date

OUT-OF-STATE EMPLOYEE TRAVEL BUDGET REQUEST

Out-of-State travel requests must be submitted for approval no less than 30 days in advance. Each employee must complete a separate request form.

Purpose of Travel (trip details are required to be attached to this request)

Department

Budget Code Number

Name of Traveler

Employee Signature

Destination (City/State)

Mode of Transportation:

State Car
Airline
Enterprise Rental Car
Personal Car

Lodging/Meeting Facility:

Hotel Name:
Hotel Phone Number:
Meeting Facility:
Facility Phone #:

Reconciliation of Expenses

Travel Expenses	Amount	Travel Expenses	Amount
Commercial Transportation (incl air/rental car)	\$ -	Lodging	\$ -
Mileage, Private Car	\$ -	Other Emergency and Necessary Expenses	\$ -
Meals and Incidentals	\$ -	Grand Total - Travel Expenses	\$ -

Current IRS Meals/Incidentals Daily Cap Rates (print and attach to your travel reimbursement request)

[Per Diem Rates Look-Up](#)

Enter daily Meals & Inc per diem 

Enter daily Lodging per diem 

Itemized Statement of Necessary Traveling Expenses Incurred for Period

Date mm/dd/yy	From City/State	Points of Travel		Private Car Mileage/Fare Description	Commercial Transportation	Total: Meals and Incidentals	Total: Lodging	Other Emergency & Necessary Expenses (Receipts Required)	
		To City/State						Detail	Amount
Fri Day					\$ -	\$ -	\$ -	Registration*	\$ -
Fri Day					\$ -	\$ -	\$ -	Gas - Car	\$ -
Fri Day					\$ -	\$ -	\$ -	Baggage Fees	\$ -
Fri Day					\$ -	\$ -	\$ -	Parking Fees	\$ -
Fri Day					\$ -	\$ -	\$ -	Other (detail):	\$ -
Fri Day					\$ -	\$ -	\$ -		\$ -
Fri Day					\$ -	\$ -	\$ -		\$ -
Fri Day					\$ -	\$ -	\$ -		\$ -
Fri Day					\$ -	\$ -	\$ -		\$ -
Totals				0	\$ -	\$ -	\$ -		\$ -

APPROVALS:

Budget Supervisor	Date	CFO	Date
Supervisor	Date	President	Date

*To Pay Registration/Conference Fees in Advance of Travel:
Please ensure to attach registration/conference fee voucher information and fee documentation with this request for travel

APPENDIX H:

INCOMPLETE GRADE FORM

Incomplete Grade Form Marion Military Institute

NAME: _____

DATE: _____

TITLE OF COURSE: _____

COURSE PREFIX, NUMBER, AND SECTION: _____

JUSTIFICATION FOR INCOMPLETE GRADE:

PROPOSED DATE FOR COMPLETING ALL ASSIGNMENTS FOR THIS COURSE:

SIGNATURES:

ADVISOR: _____ DATE: _____

INSTRUCTOR: _____ DATE: _____

DEAN: _____ DATE: _____

APPENDIX I:
INDEPENDENT STUDY REQUEST FORM

Marion Military Institute
Independent Study Request Form

NAME:

DATE OF REQUEST:

TITLE OF COURSE REQUESTED:

COURSE PREFIX AND NUMBER:

JUSTIFICATION FOR COURSE:

PROPOSED TIME SCHEDULE (INCLUDING LABS, IF APPLICABLE):

MONDAY: _____

TUESDAY: _____

WEDNESDAY: _____

THURSDAY: _____

FRIDAY: _____

SATURDAY: _____

SUNDAY: _____

BEGINNING DATE: _____ **ENDING DATE:** _____

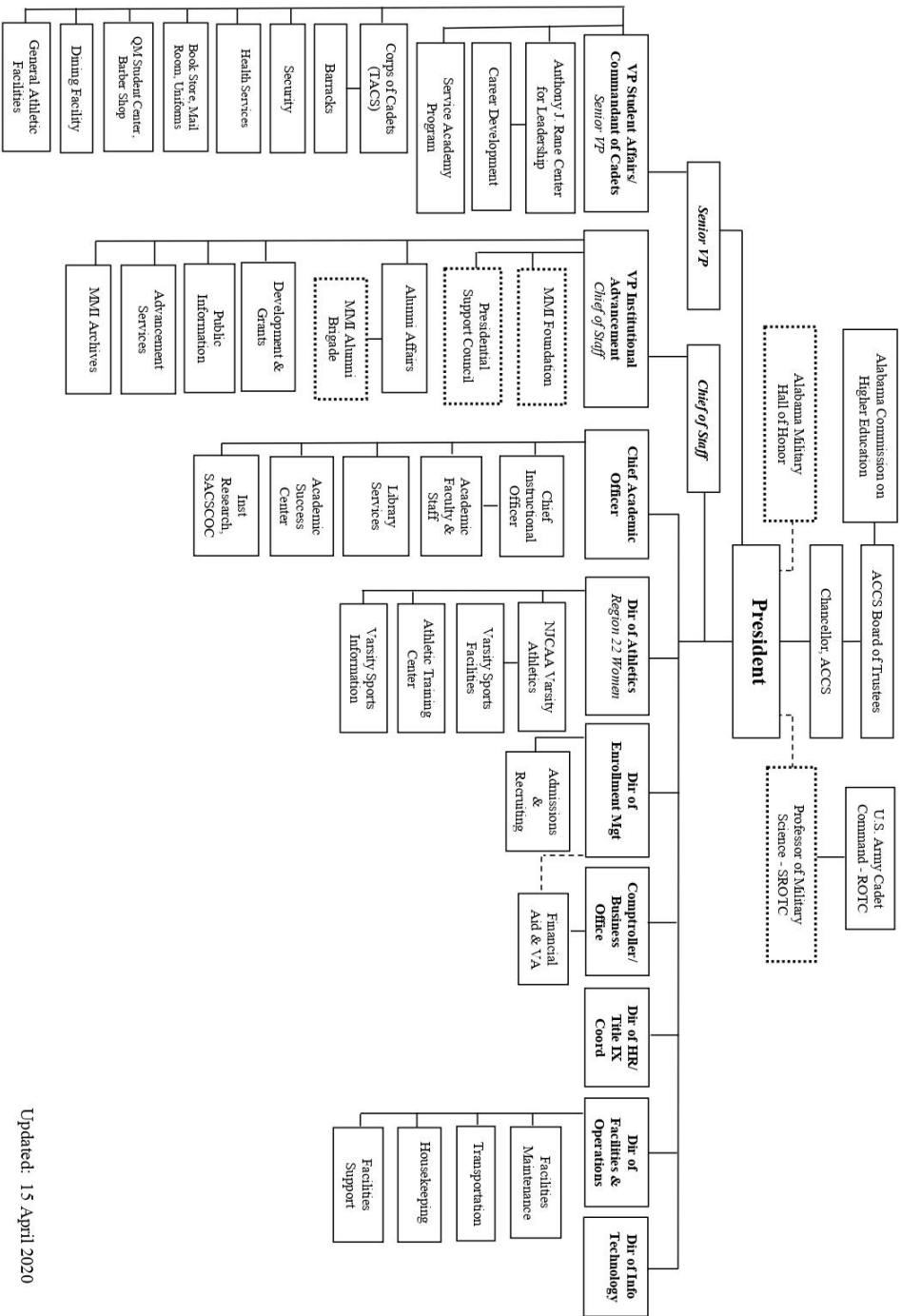
PROPOSED INSTRUCTOR SIGNATURE: _____

DEAN SIGNATURE and DATE

APPENDIX J:

**MARION MILITARY INSTITUTE
ORGANIZATIONAL STRUCTURE**

ORGANIZATIONAL STRUCTURE



Updated: 15 April 2020

APPENDIX K:

CURRICULUM REVISION PROPOSAL FORM

MARION MILITARY INSTITUTE

Curriculum Revision Proposal

To assist Marion Military Institute faculty in the development of proposals for curriculum revisions (e.g., additions, deletions, major revision of courses, changes in requirements for concentrations, general education, etc.), the outline and guidelines below are provided. Please consider these items carefully when writing the proposal to ensure Academic Council support and approval.

The procedure for submitting a Curriculum Revision Proposal is as follows:

1. Based on curricular need, relevance to the College's mission, or both, a new program or course is proposed by a faculty member to his/her department chair.
2. If the department chair approves the proposal based on the criteria in (1), he/she will propose the new program or course to the Chief Instructional Officer (Academic Dean).
3. The Chief Instructional Officer reviews the proposal and, if approved based on the criteria in (1), asks the appropriate department chair to complete a Curriculum Revision Proposal form for review by the Chief Academic Officer, who, using the same criteria, can then recommend inclusion on the agenda of a subsequent Academic Council meeting.
4. If approved by the Council using the criteria in (1), the Chief Instructional Officer will submit the proposed change to the appropriate outside agencies. For new courses, the proposed change is sent to Alabama Department of Postsecondary Education for inclusion in the Course Directory (*Alabama State Board Policy 717.01*) and to the AGSC/STARS Committee for review and approval for inclusion in the state transfer system. For new programs, the College must submit the program to the Alabama State Board of Education for approval, per the process described in *Alabama State Board Policy 702.01, Requests for New Instructional Programs*, and *Alabama State Board Policy Guidelines 702.01*. Any request for a new program will also be forwarded to the Alabama Commission on Higher Education (ACHE) for approval by that body, as well as the Alabama State Board of Education.
5. When approved, the College may then include the new course in the curriculum and the new program as part of the College's academic program offerings.

Submitted by:

Signature of Faculty member (if needed)

Signature of Department Chair

Signature of Chief Instructional Officer

Signature of Chief Academic Officer

PROPOSAL:

CATALOG DESCRIPTION:

RATIONALE:

EXPECTED OUTCOMES:

LEGAL IMPLICATIONS:

COURSE OUTLINE:

BIBLIOGRAPHY OF TEXTS, REQUIRED READING, AND RELATED MATERIAL:

LEARNING OUTCOMES:

MEASUREMENT OF STUDENT INTEREST AND EXPECTED ENROLLMENT: